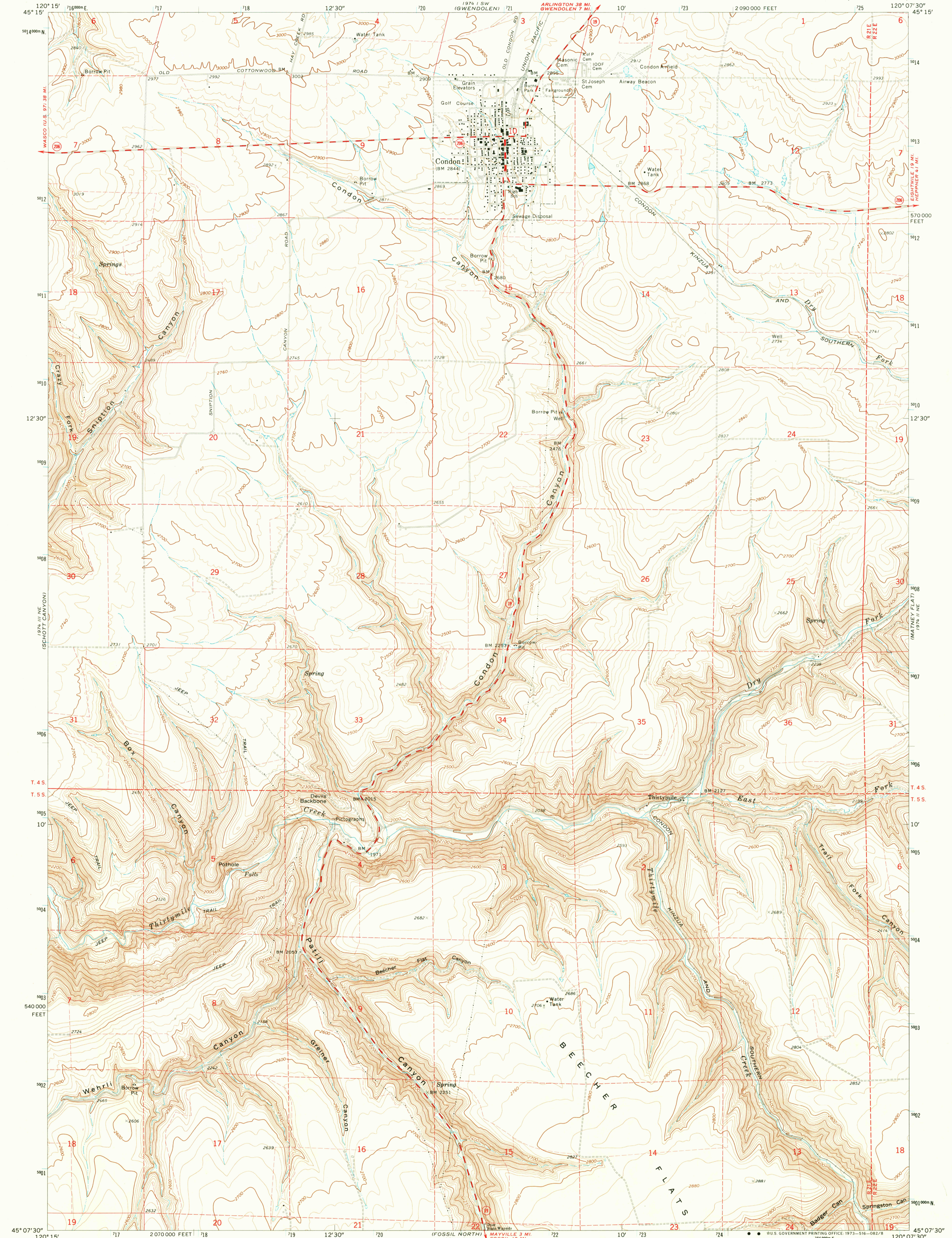


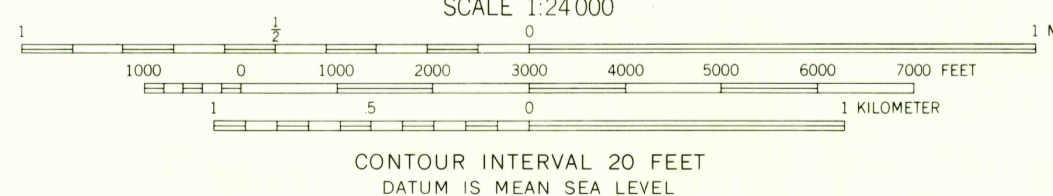
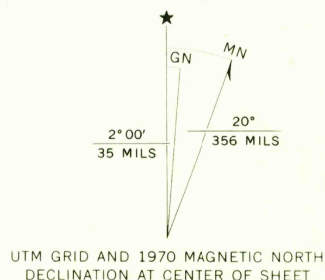
1974 II NE
(60 BUTTE)

1974 II SE
(DEVILS GAP)



Mapped, edited, and published by the Geological Survey
Control by USGS and USC&GS

Topography by photogrammetric methods from aerial
photographs taken 1969. Field checked 1970
Projection and 10,000-foot grid ticks: Oregon coordinate
system, north zone (Lambert conformal conic)
1000-meter Universal Transverse Mercator grid ticks,
zone 10, shown in blue. 1927 North American datum
Fine red dashed lines indicate selected fence lines



CONTOUR INTERVAL 20 FEET
DATUM IS MEAN SEA LEVEL



ROAD CLASSIFICATION
Primary highway, hard surface
Secondary highway, hard surface
Unimproved road
Light duty road, hard or improved surface
Interstate Route
U. S. Route
State Route

SEP 28 1973

CONDON, OREG.
N4507.5—W12007.5/7.5

1970

AMS 1974 II NW—SERIES V892

THIS MAP COMPLIES WITH NATIONAL MAP ACCURACY STANDARDS
FOR SALE BY U. S. GEOLOGICAL SURVEY, DENVER, COLORADO 80225, OR WASHINGTON, D. C. 20242
A FOLDER DESCRIBING TOPOGRAPHIC MAPS AND SYMBOLS IS AVAILABLE ON REQUEST

USGS
Topographic Edition

Hoan
3500
50 plane