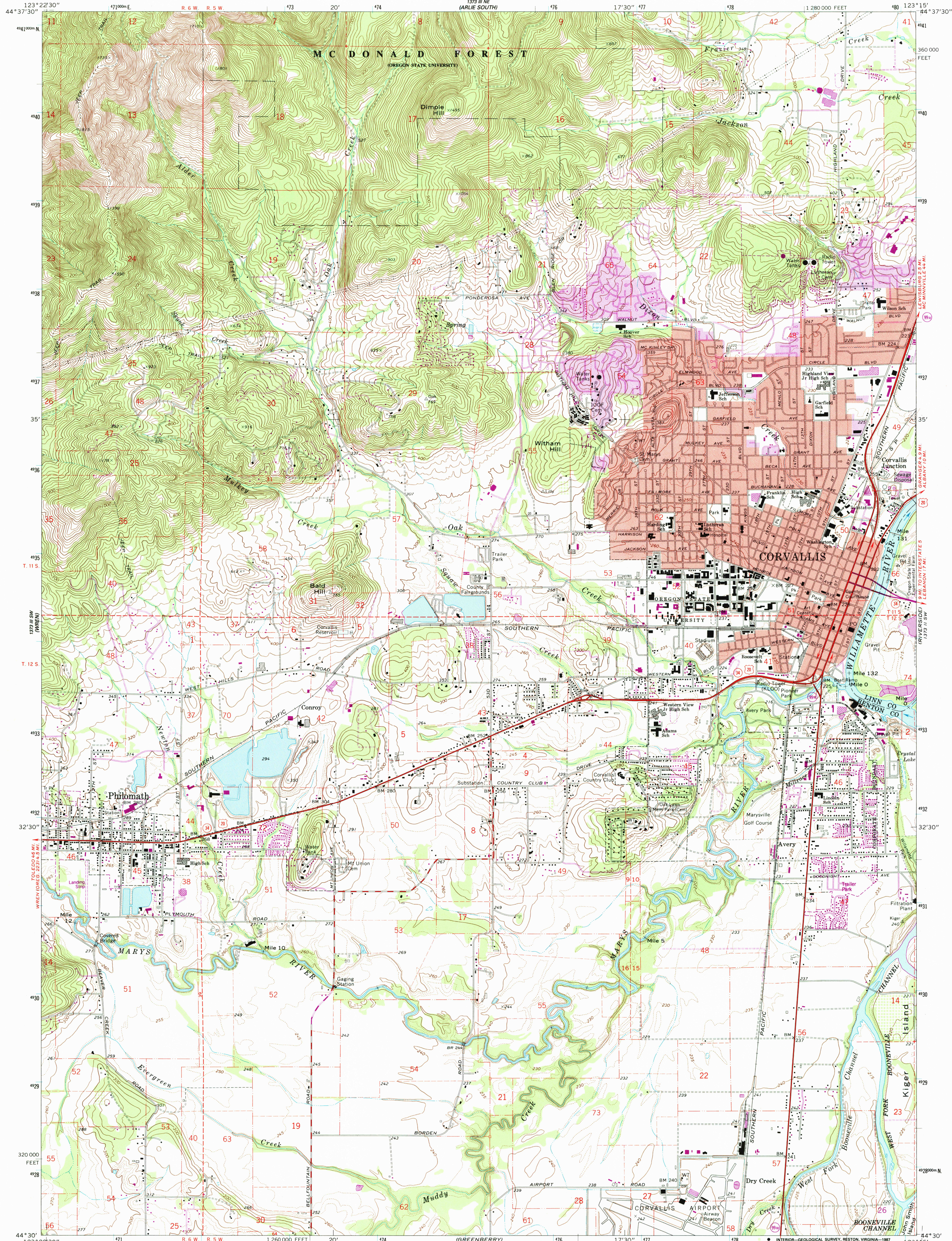


UNITED STATES
DEPARTMENT OF THE INTERIOR
GEOLOGICAL SURVEY

CORVALLIS QUADRANGLE
OREGON
7.5 MINUTE SERIES (TOPOGRAPHIC)
SE/4 CORVALLIS 15' QUADRANGLE



Mapped, edited, and published by the Geological Survey

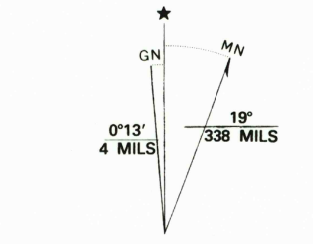
Control by USGS, USC&GS, and State of Oregon
Topography by photogrammetric methods from aerial photographs taken 1967. Field checked 1969
Polyconic projection. 1927 North American datum
10,000-foot grid based on Oregon coordinate system, north zone
1000-meter Universal Transverse Mercator grid ticks, zone 10, shown in blue

To place on the predicted North American Datum 1983, move the projection lines 23 meters north and 96 meters east as shown by dashed corner ticks

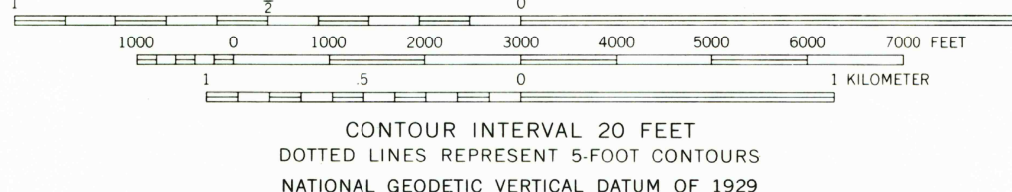
There may be private inholdings within the boundaries of the National or State reservations shown on this map

Red tint indicates areas in which only landmark buildings are shown

Purple tint indicates extension of urban area

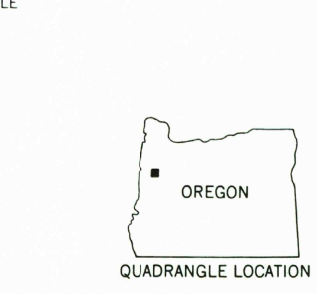


UTM GRID AND 1986 MAGNETIC NORTH DECLINATION AT CENTER OF SHEET



CONTOUR INTERVAL 20 FEET
DOTTED LINES REPRESENT 5-FOOT CONTOURS
NATIONAL GEODETIC VERTICAL DATUM OF 1929

THIS MAP COMPLIES WITH NATIONAL MAP ACCURACY STANDARDS
FOR SALE BY U. S. GEOLOGICAL SURVEY, DENVER, COLORADO 80225, OR RESTON, VIRGINIA 22092
A FOLDER DESCRIBING TOPOGRAPHIC MAPS AND SYMBOLS IS AVAILABLE ON REQUEST



QUADRANGLE LOCATION

ROAD CLASSIFICATION
Primary highway, all weather, hard surface
Secondary highway, all weather, hard surface
Light-duty road, all weather, improved surface
Unimproved road, fair or dry weather
U. S. Route
State Route

CORVALLIS, OREG.
SE/4 CORVALLIS 15' QUADRANGLE
44123-E3-TF-024

1969
PHOTOREVISED 1986
DMA 1373 III SE-SERIES V892

