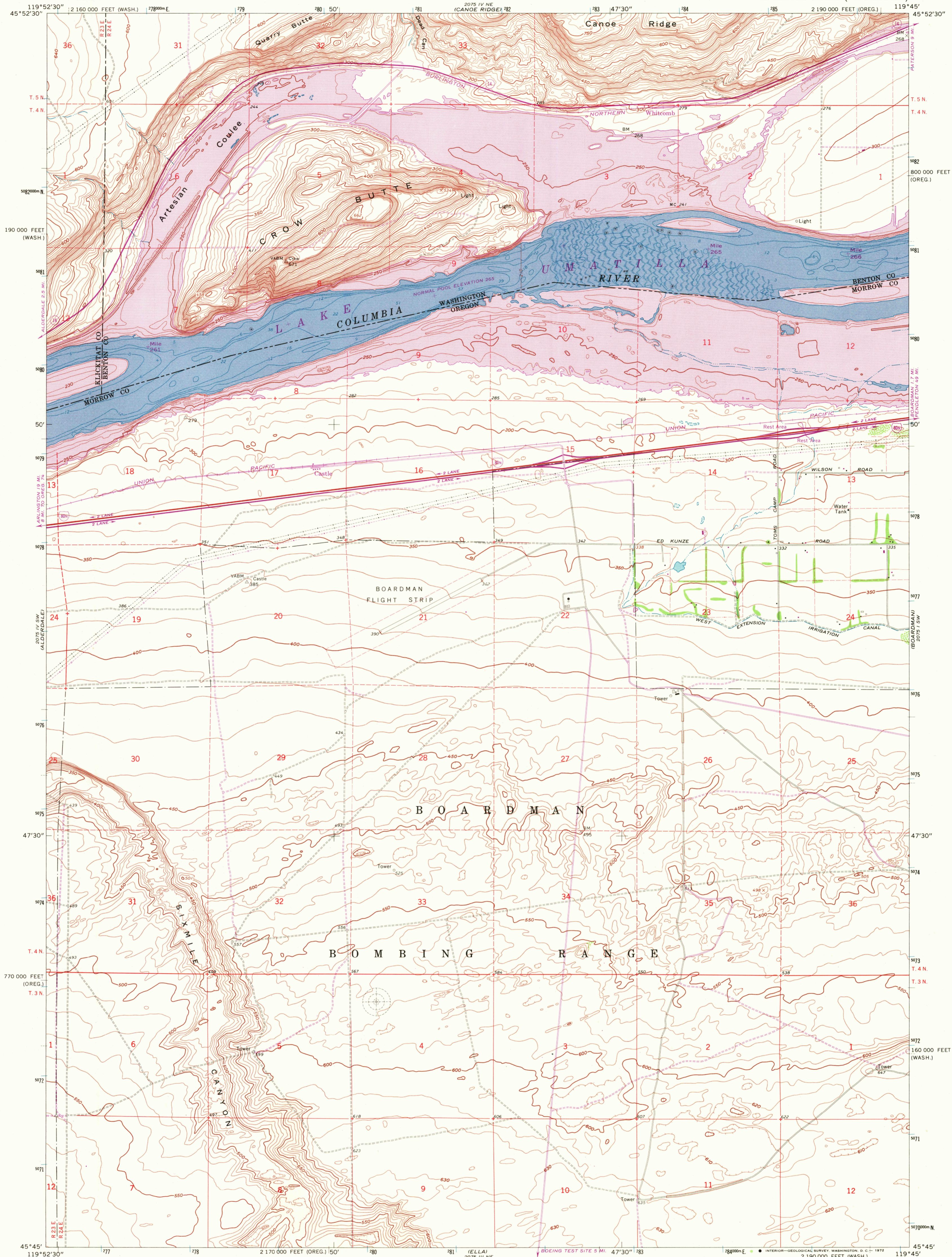
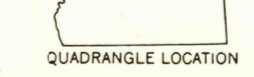
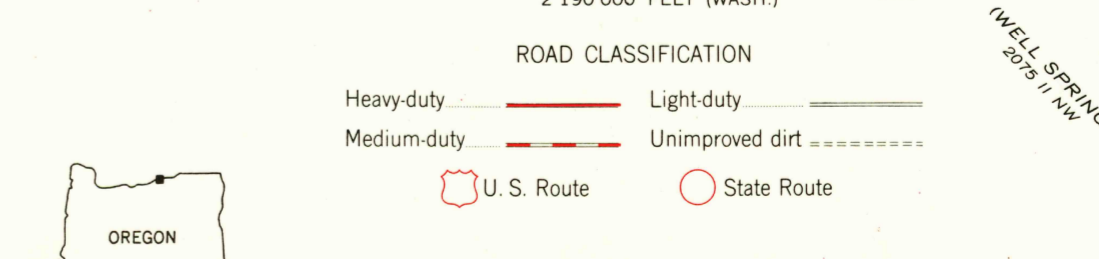
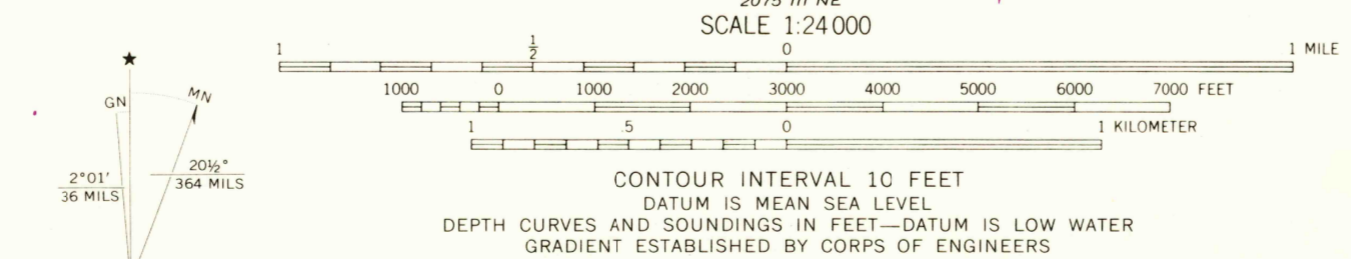


UNITED STATES  
DEPARTMENT OF THE INTERIOR  
GEOLOGICAL SURVEY

CROW BUTTE QUADRANGLE  
OREGON-WASHINGTON  
7.5 MINUTE SERIES (TOPOGRAPHIC)



Mapped, edited, and published by the Geological Survey  
Control by USGS, USC&GS, and USCE  
Topography by photogrammetric methods from aerial  
photographs taken 1958 and 1960. Field checked 1962  
This information is not intended for navigational purposes  
Selected hydrographic data compiled from USC&GS Chart 6161 (1962)  
This information is not intended for navigational purposes  
Polyconic projection. 1927 North American datum  
10,000-foot grids based on Oregon coordinate system, north zone,  
and Washington coordinate system, south zone  
1000-meter Universal Transverse Mercator grid ticks,  
zone 11, shown in blue  
Fine red dashed lines indicate selected fence lines  
Certain land lines omitted because of insufficient data



CROW BUTTE, OREG.-WASH.  
N4545-W11945/7.5

THIS MAP COMPLIES WITH NATIONAL MAP ACCURACY STANDARDS  
FOR SALE BY U.S. GEOLOGICAL SURVEY, DENVER, COLORADO 80225, OR WASHINGTON, D. C. 20242  
A FOLDER DESCRIBING TOPOGRAPHIC MAPS AND SYMBOLS IS AVAILABLE ON REQUEST

Revisions shown in purple and recompilation of  
woodland areas compiled from aerial photographs  
taken 1970. This information not field checked

1962  
PHOTOREVISED 1970  
AMS 2075 IV SE-SERIES V892

3335  
JAN 18 1972  
USGS  
HISTORICAL FILE  
TOPOGRAPHIC DIVISION