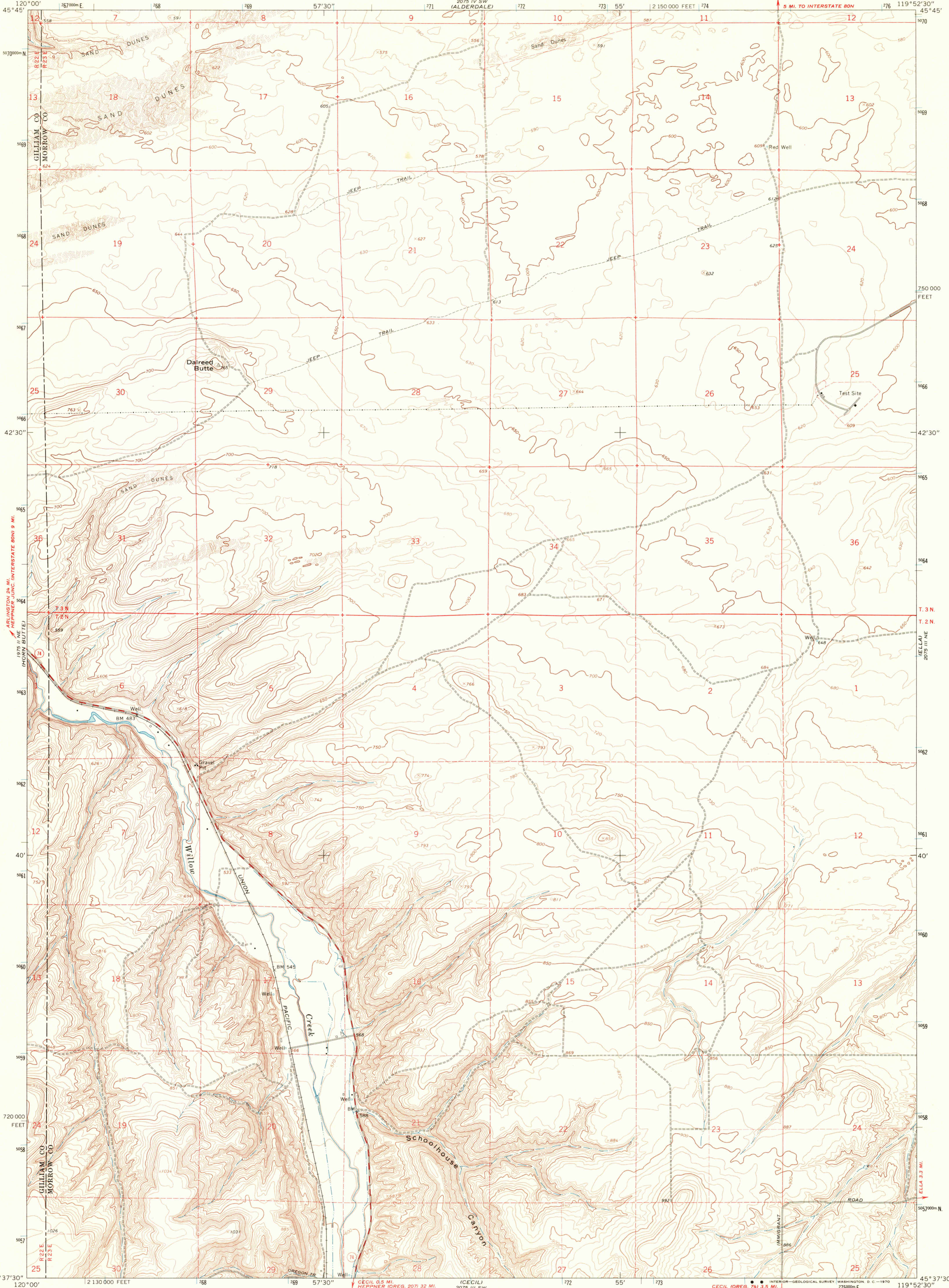
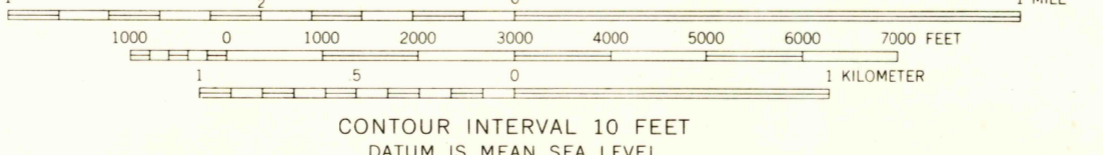
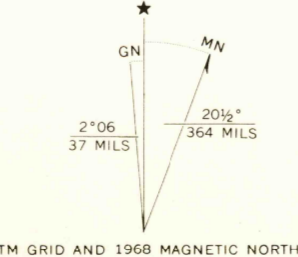


UNITED STATES
DEPARTMENT OF THE INTERIOR
GEOLOGICAL SURVEY

DALREED BUTTE QUADRANGLE
OREGON
7.5 MINUTE SERIES (TOPOGRAPHIC)

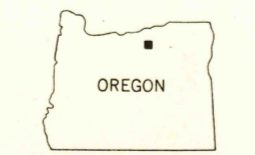


Mapped, edited, and published by the Geological Survey
Control by USGS and USC&GS
Topography by photogrammetric methods from aerial
photographs taken 1965. Field checked 1968.
Polyconic projection. 1927 North American datum
10,000-foot grid based on Oregon coordinate system,
north zone
1000-meter Universal Transverse Mercator grid ticks,
zone 11, shown in blue
Fine red dashed lines indicate selected fence lines



USGS
Historical File
Topographic Division

ROAD CLASSIFICATION
Medium-duty — Light-duty
Unimproved dirt —
State Route



U.S.G.S. DALREED BUTTE, OREG.
N4537.5—W11952.5/7.5

FILE COPY
TOPOGRAPHIC DIVISION

THIS MAP COMPLIES WITH NATIONAL MAP ACCURACY STANDARDS
FOR SALE BY U. S. GEOLOGICAL SURVEY, DENVER, COLORADO 80225, OR WASHINGTON, D. C. 20242
A FOLDER DESCRIBING TOPOGRAPHIC MAPS AND SYMBOLS IS AVAILABLE ON REQUEST

SEP 2 1970

2160

HISTORICAL