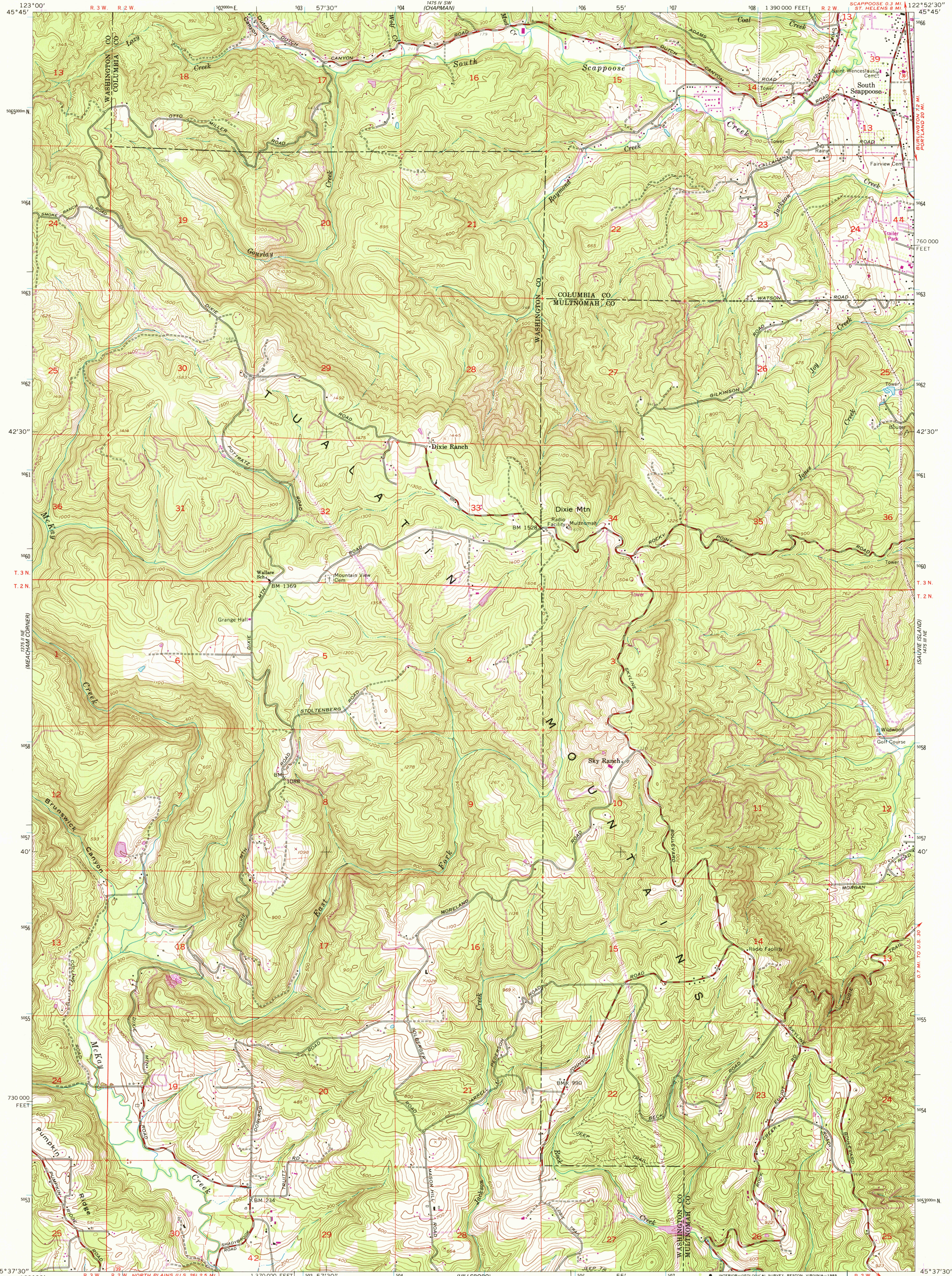


UNITED STATES  
DEPARTMENT OF THE INTERIOR  
GEOLOGICAL SURVEY

DIXIE MOUNTAIN QUADRANGLE  
OREGON  
7.5 MINUTE SERIES (TOPOGRAPHIC)

NW 1/4 HILLSBORO 15' QUADRANGLE

SCAPPOOSE 6.3 MI.  
ST. HELENS 8 MI.



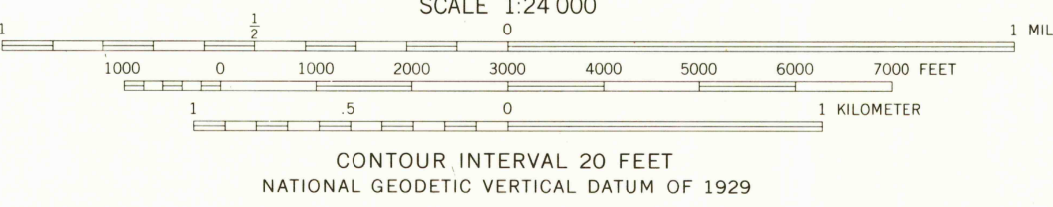
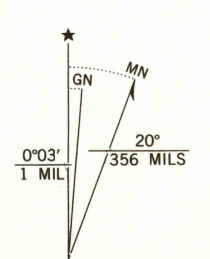
Mapped, edited, and published by the Geological Survey  
Control by USGS and USC&GS

Topography from aerial photographs by photogrammetric methods  
Aerial photographs taken 1951. Field check 1953  
Revised from aerial photographs taken 1960. Field check 1961

Polyconic projection. 1927 North American datum  
10,000-foot grid based on Oregon coordinate system, north zone  
1000-meter Universal Transverse Mercator grid ticks,  
zone 10, shown in blue

To place on the predicted North American Datum 1983,  
move the projection lines 23 meters north and  
95 meters east as shown by dashed corner ticks

Dashed land lines indicate approximate locations  
Revisions shown in purple compiled from aerial  
photographs taken 1981 and other sources  
This information not field checked. Map edited 1985



ROAD CLASSIFICATION  
Heavy-duty ——— Light-duty ———  
Medium-duty ——— Unimproved dirt ———  
U.S. Route

DIXIE MOUNTAIN, OREG.  
NW 1/4 HILLSBORO 15' QUADRANGLE  
45122-F8-TF-024

1961  
PHOTOREVISED 1985  
DMA 1475 III NW-SERIES V892

USGS NMD HISTORICAL MAP  
MAR 14 1986  
REC'D FILE COPY