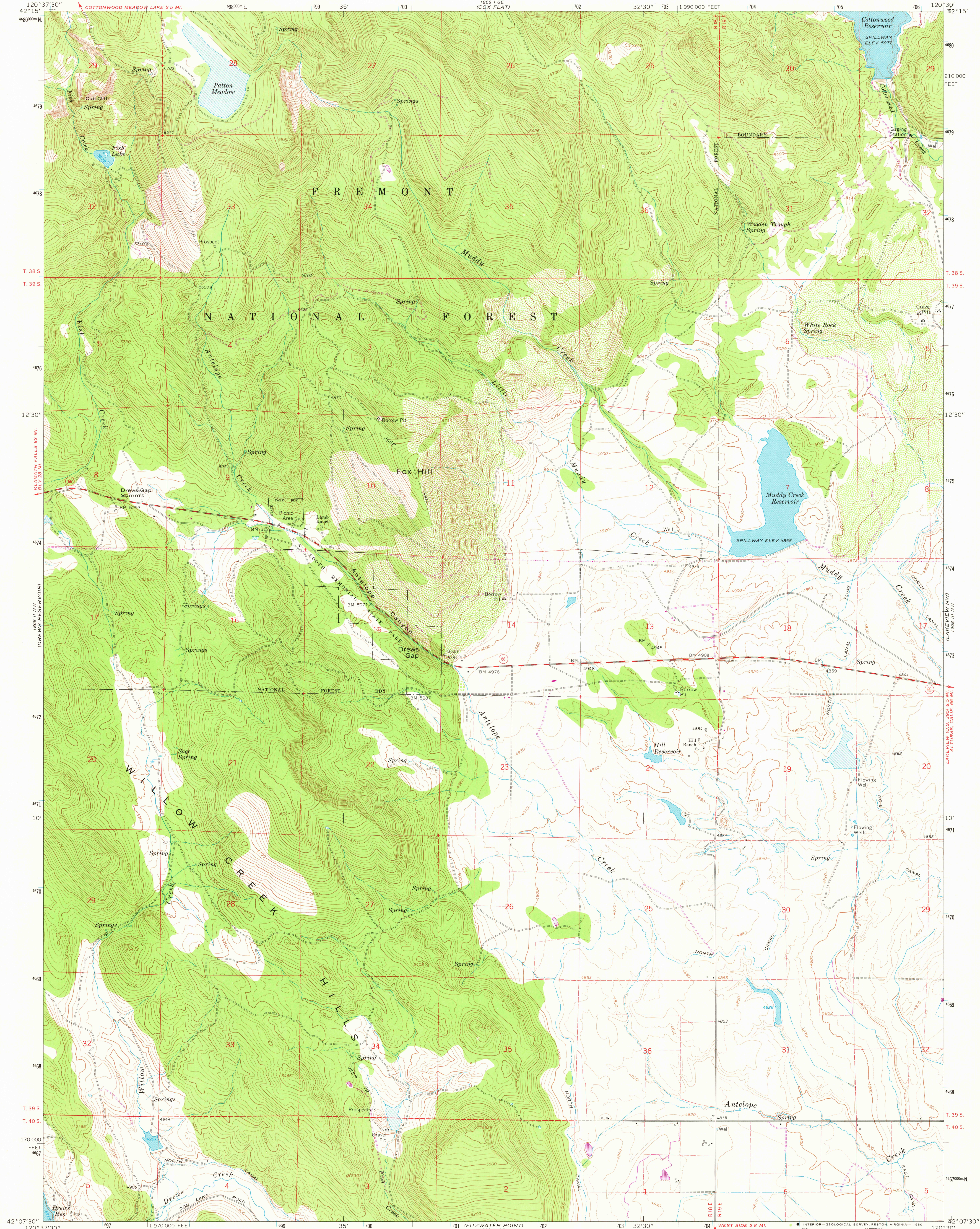


UNITED STATES
DEPARTMENT OF THE INTERIOR
GEOLOGICAL SURVEY

DREWS GAP QUADRANGLE
OREGON-LAKE CO.
7.5 MINUTE SERIES (TOPOGRAPHIC)



Mapped, edited, and published by the Geological Survey

Control by USGS and NOS/NOAA

Topography by photogrammetric methods from aerial

photographs taken 1960 and 1962. Field checked 1964

Polyconic projection. 1927 North American datum

10,000-foot grid based on Oregon coordinate system,

south zone

1000-meter Universal Transverse Mercator grid ticks,

zone 10, shown in blue

To place on the predicted North American Datum 1983

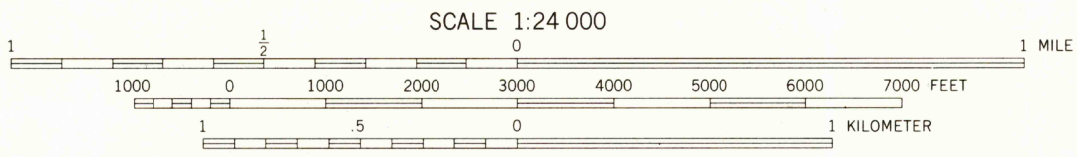
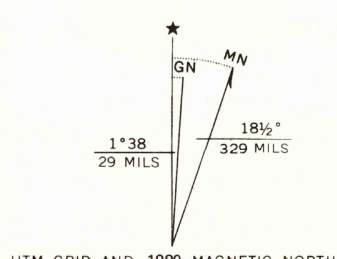
move the projection lines 18 meters north and

89 meters east as shown by dashed corner ticks

Fine red dashed lines indicate selected fence lines

There may be private inholdings within the boundaries of

the National or State reservations shown on this map



CONTOUR INTERVAL 20 FEET
DOTTED LINES REPRESENT 10-FOOT CONTOURS
NATIONAL GEODETIC VERTICAL DATUM OF 1929

THIS MAP COMPLIES WITH NATIONAL MAP ACCURACY STANDARDS
FOR SALE BY U. S. GEOLOGICAL SURVEY, DENVER, COLORADO 80225 OR RESTON, VIRGINIA 22092
A FOLDER DESCRIBING TOPOGRAPHIC MAPS AND SYMBOLS IS AVAILABLE ON REQUEST



ROAD CLASSIFICATION
Medium-duty ——— Light-duty ———
Unimproved dirt =====
State Route ○

USGS
Historical File
Topographic Division

DREWS GAP, OREG.
N4207.5—W12030.7/5

1964
PHOTOREVISED 1980
DMA 1868 II NE—SERIES V892

OCT - 3 1980

2085