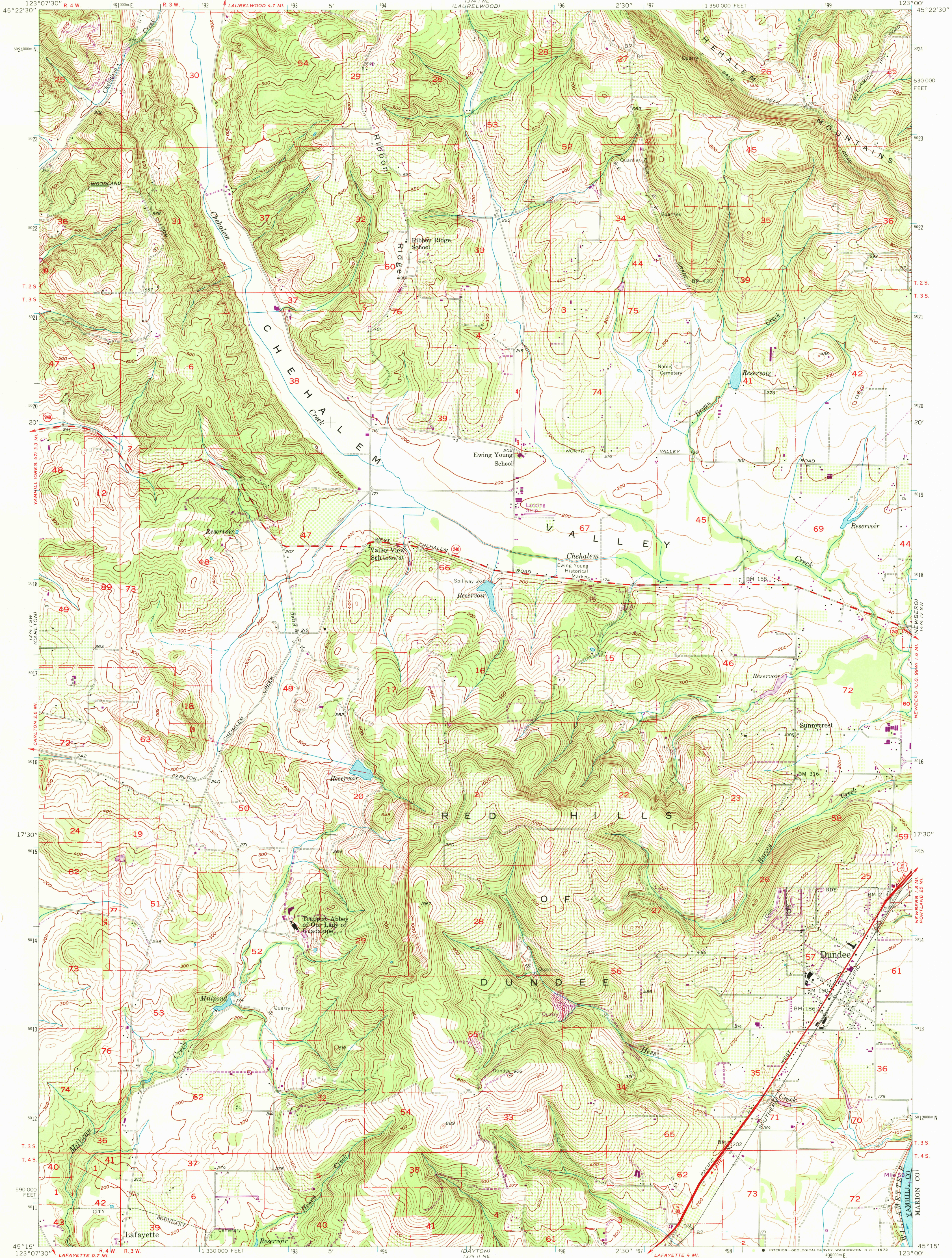
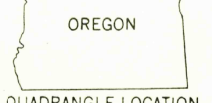
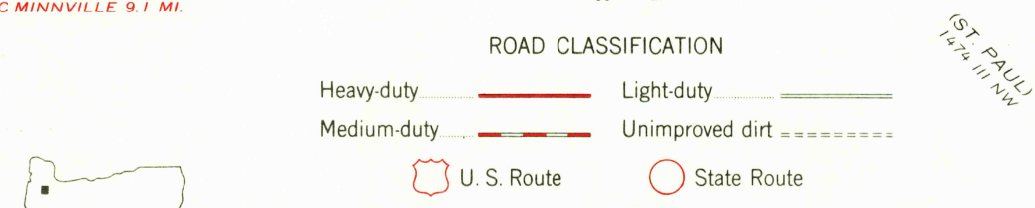
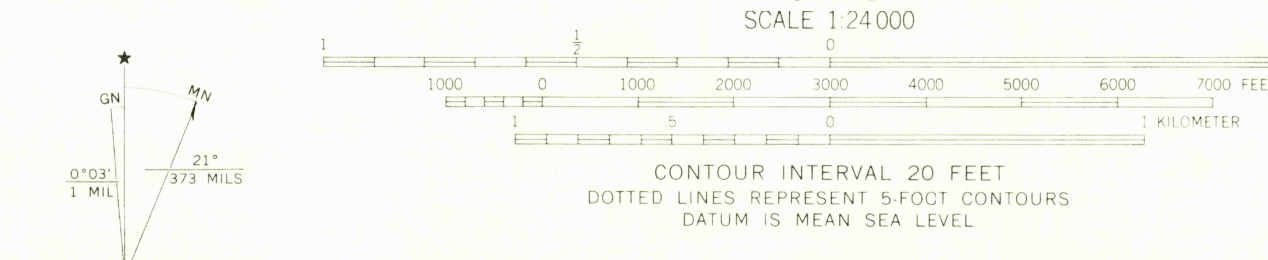


1374 1 NE  
(GASTON)

1374 1 NW  
(SCHOOL)



Mapped, edited, and published by the Geological Survey  
Control by USGS, USC&GS, USCE, and State of Oregon  
Topography from aerial photographs by multiplex methods  
Aerial photographs taken 1954. Field check 1956  
Polyconic projection. 1927 North American datum  
10,000-foot grid based on Oregon coordinate system, north zone  
1000-meter Universal Transverse Mercator grid ticks,  
zone 10, shown in blue  
Revisions shown in purple compiled from aerial photographs  
taken 1970. This information not field checked



DUNDEE, OREG.  
SE.4 YAMHILL 15' QUADRANGLE  
N4515—W12300/7.5

2535  
FEB 2 1972

THIS MAP COMPLIES WITH NATIONAL MAP ACCURACY STANDARDS  
FOR SALE BY U. S. GEOLOGICAL SURVEY, DENVER, COLORADO 80225, OR WASHINGTON, D. C. 20242  
A FOLDER DESCRIBING TOPOGRAPHIC MAPS AND SYMBOLS IS AVAILABLE ON REQUEST

1956  
PHOTOREVISED 1970  
AMS 1374 1 SE—SERIES V892

USGS  
Historical File  
Topographic Division