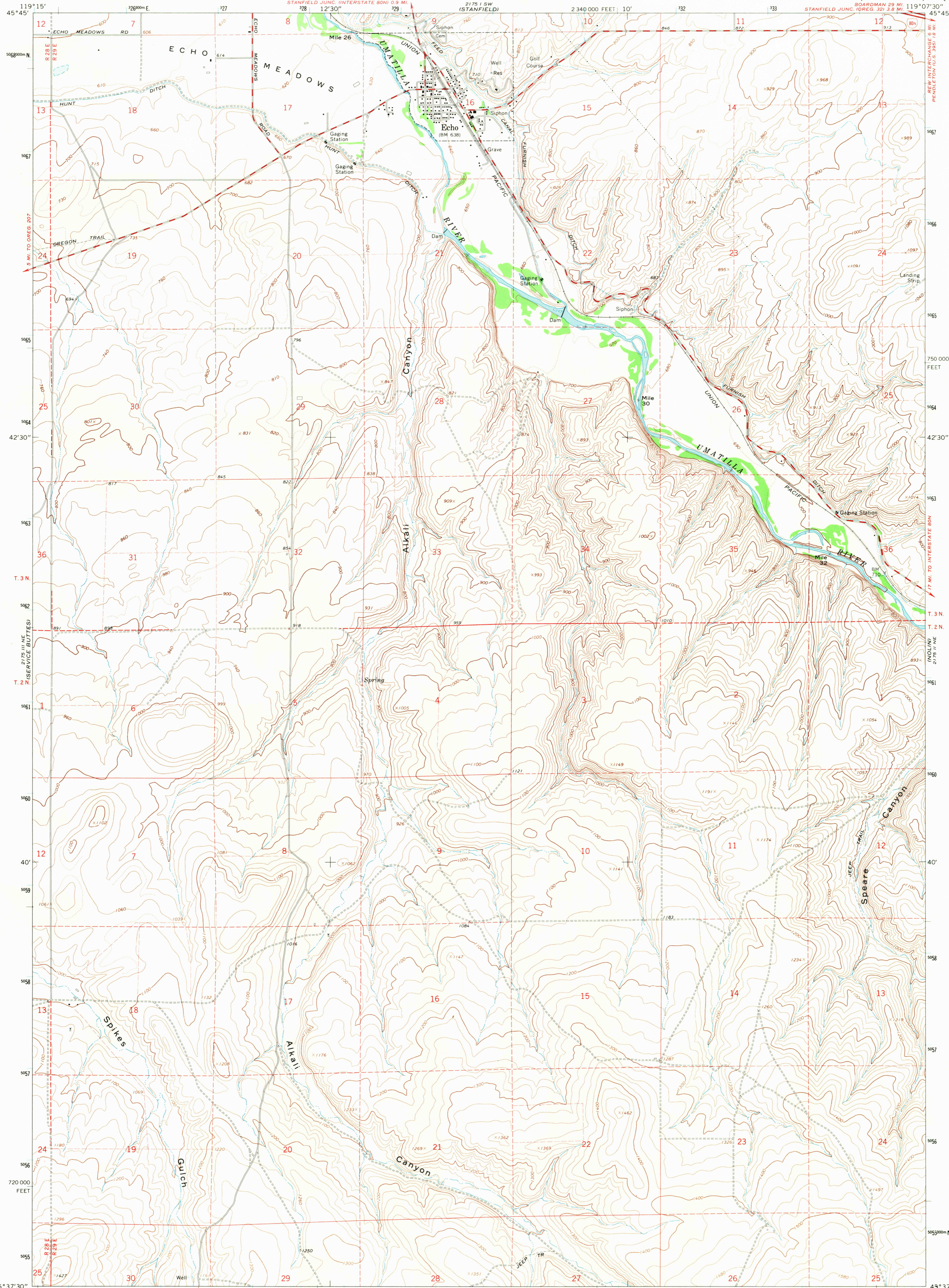
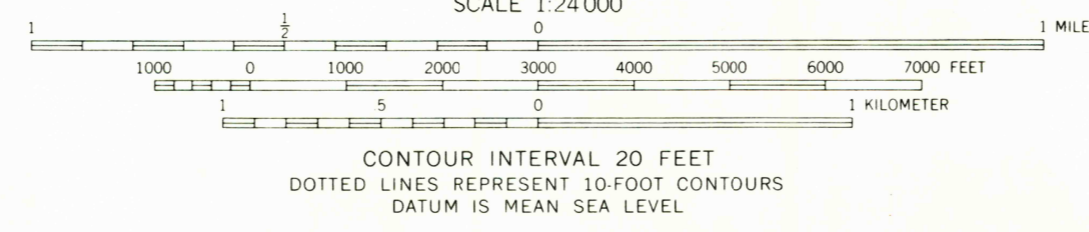
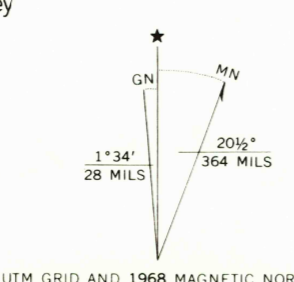


UNITED STATES  
DEPARTMENT OF THE INTERIOR  
GEOLOGICAL SURVEY

ECHO QUADRANGLE  
OREGON—UMATILLA CO.  
7.5 MINUTE SERIES (TOPOGRAPHIC)



Mapped, edited, and published by the Geological Survey  
Control by USGS and USC&GS  
Topography by photogrammetric methods from aerial  
photographs taken 1965. Field checked 1968  
Polyconic projection. 1927 North American datum  
10,000-foot grid based on Oregon coordinate system,  
north zone  
1000-meter Universal Transverse Mercator grid ticks,  
zone 11, shown in blue  
Fine red dashed lines indicate selected fence lines



CONTOUR INTERVAL 20 FEET  
DOTTED LINES REPRESENT 10-FOOT CONTOURS  
DATUM IS MEAN SEA LEVEL

USGS  
Historical File  
Topographic Division



ROAD CLASSIFICATION  
Heavy-duty ——— Light-duty ———  
Medium-duty ——— Unimproved dirt ———  
Interstate Route

U.S.G.S.  
FILE COPY  
TOPOGRAPHIC DIVISION

ECHO, OREG.  
N4537.5—W11907.5/7.5  
1968

THIS MAP COMPLIES WITH NATIONAL MAP ACCURACY STANDARDS  
FOR SALE BY U.S. GEOLOGICAL SURVEY, DENVER, COLORADO 80225, OR WASHINGTON, D. C. 20242  
A FOLDER DESCRIBING TOPOGRAPHIC MAPS AND SYMBOLS IS AVAILABLE ON REQUEST

AMS 2175 II NW—SERIES V892

JUN 19 1970

HISTORICAL  
2650