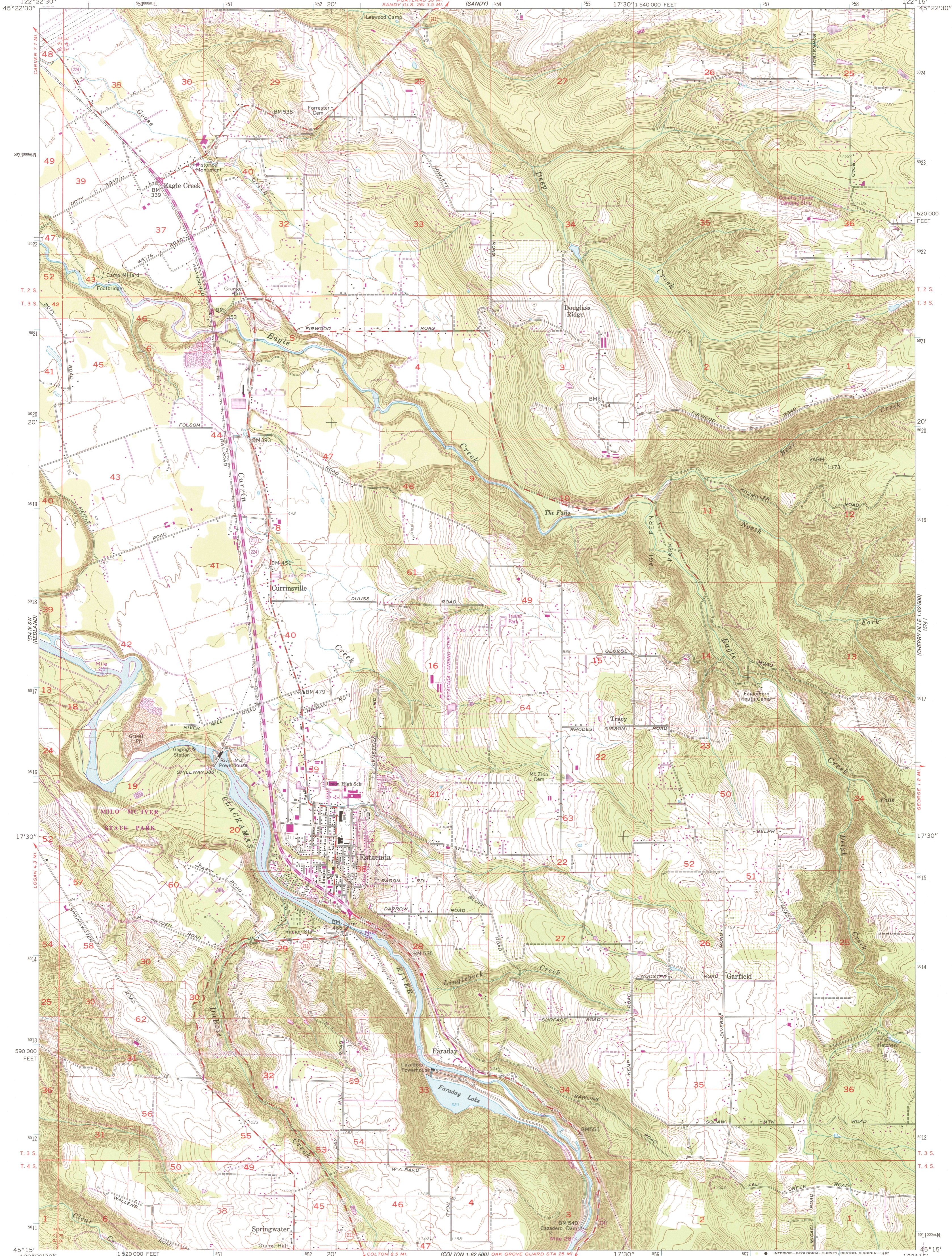
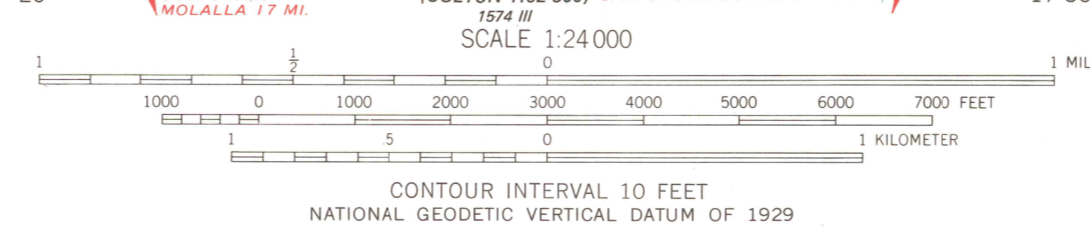
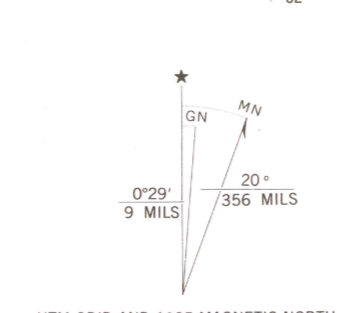


122° 22' 30" W  
45° 22' 30" N

122° 15' W  
45° 15' N



Mapped, edited, and published by the Geological Survey  
Control by USGS, NOS/NOAA, and State of Oregon  
Topography from aerial photographs by photogrammetric methods  
Aerial photographs taken 1952. Field check 1954  
Revised from aerial photographs taken 1960. Field check 1961  
Polyconic projection. 1927 North American datum  
10,000-foot grid based on Oregon coordinate system, north zone  
1000-meter Universal Transverse Mercator grid ticks, zone 10,  
shown in blue  
To place on the predicted North American Datum 1983,  
move the projection lines 22 meters north and  
93 meters east as shown by dashed corner ticks  
There may be private holdings within the boundaries of  
the National or State reservations shown on this map  
Fine red dashed lines indicate selected fence lines



ROAD CLASSIFICATION

Primary highway, hard surface	Light-duty road, hard or improved surface
Secondary highway, hard surface	Unimproved road
Interstate Route	U.S. Route
	State Route

THIS MAP COMPLIES WITH NATIONAL MAP ACCURACY STANDARDS  
FOR SALE BY U.S. GEOLOGICAL SURVEY, DENVER, COLORADO 80225, OR RESTON, VIRGINIA 22092  
A FOLDER DESCRIBING TOPOGRAPHIC MAPS AND SYMBOLS IS AVAILABLE ON REQUEST

Revisions shown in purple compiled from aerial photographs taken 1981 and other sources  
This information not field checked. Map edited 1985

ESTACADA, OREG.  
8E/4 SANDY 15' QUADRANGLE  
45122-C3-TF-024  
1961  
PHOTOREVISED 1985  
DMA 1574 IV SE-SERIES V892

