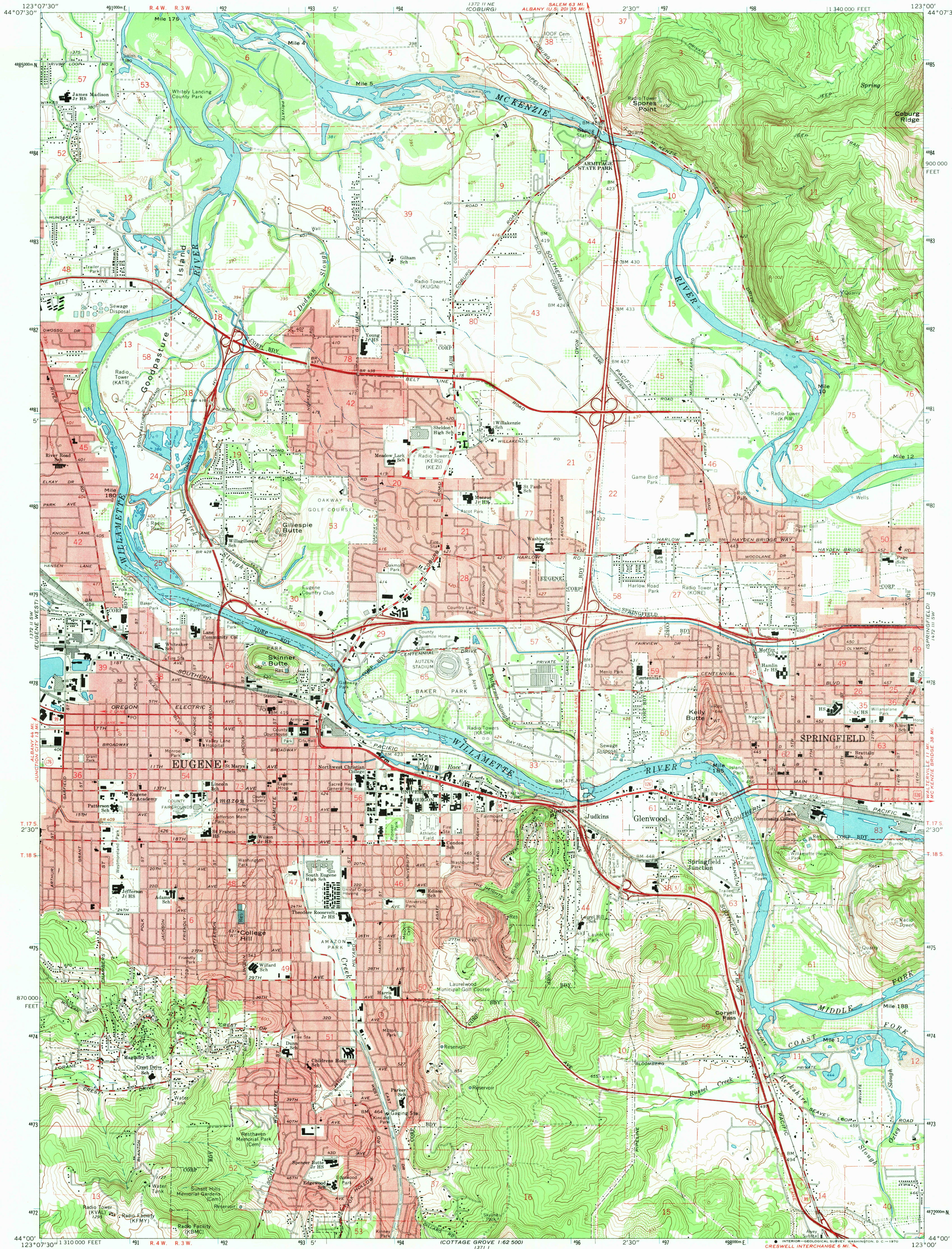
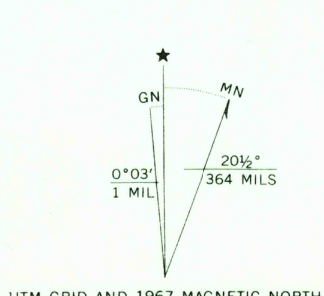


UNITED STATES
DEPARTMENT OF THE INTERIOR
GEOLOGICAL SURVEY

EUGENE EAST QUADRANGLE
OREGON—LANE CO.
7.5 MINUTE SERIES (TOPOGRAPHIC)
SE/4 EUGENE 15' QUADRANGLE



Mapped, edited, and published by the Geological Survey
Control by USGS, USC&GS, and State of Oregon
Topography by photogrammetric methods from aerial
photographs taken 1965. Field checked 1967
Polyconic projection. 1927 North American datum
10,000-foot grid based on Oregon coordinate system,
south zone
1000-meter Universal Transverse Mercator grid ticks,
zone 10, shown in blue
Red tint indicates areas in which only landmark buildings
are shown
Fine red dashed lines indicate selected fence lines



SCALE 1:24,000
1000 2000 3000 4000 5000 6000 7000 FEET
1 KILOMETER
CONTOUR INTERVAL 20 FEET
DOTTED LINES REPRESENT 5-FOOT CONTOURS
DATUM IS MEAN SEA LEVEL



ROAD CLASSIFICATION
Heavy-duty ——— Light-duty ———
Medium-duty ——— Unimproved dirt ———
Interstate Route U.S. Route State Route

EUGENE EAST, OREG.
SE/4 EUGENE 15' QUADRANGLE
N4400—W12300/7.5

U.S.G.S.
FILE COPY
TOPOGRAPHIC DIVISION
HISTORICAL

1967
AMS 1372 II SE—SERIES V892

JUN 9 1970