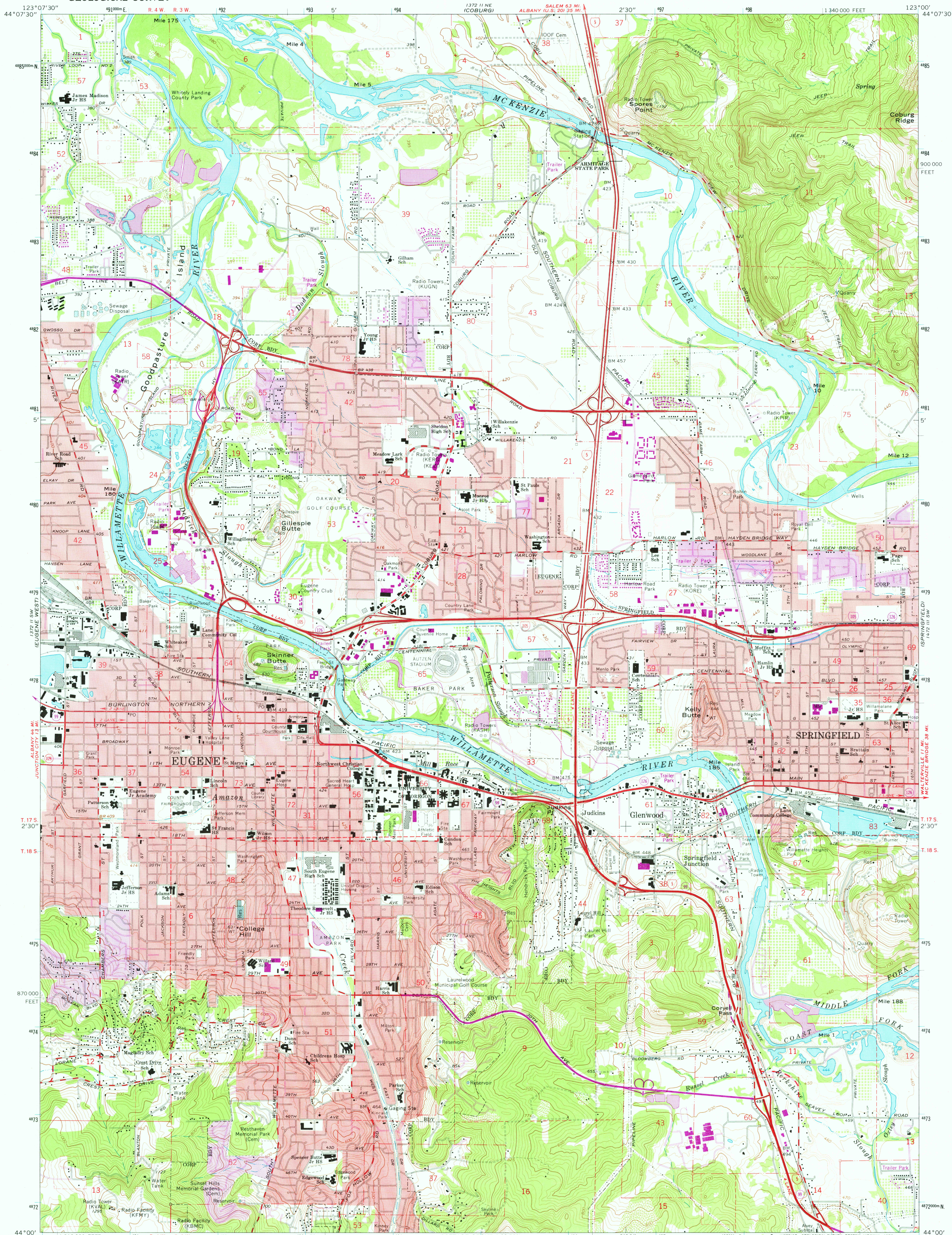


1:25,000  
MARCOA 62 5000



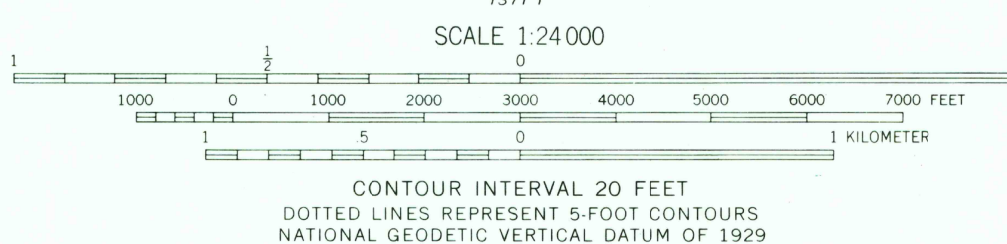
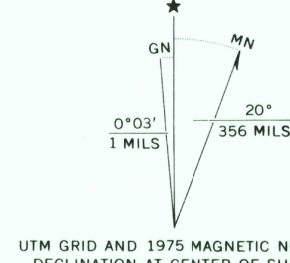
Mapped, edited, and published by the Geological Survey  
Control by USGS, NOS/NOAA, and State of Oregon

Topography by photogrammetric methods from aerial  
photographs taken 1965. Field checked 1967

Polyconic projection. 1927 North American datum  
10,000-foot grid based on Oregon coordinate system,  
south zone  
1000-meter Universal Transverse Mercator grid ticks,  
zone 10, shown in blue

Red tint indicates areas in which only landmark buildings  
are shown

Fine red dashed lines indicate selected fence lines



THIS MAP COMPLIES WITH NATIONAL MAP ACCURACY STANDARDS  
FOR SALE BY U.S. GEOLOGICAL SURVEY, DENVER, COLORADO 80225, OR RESTON, VIRGINIA 22092  
A FOLDER DESCRIBING TOPOGRAPHIC MAPS AND SYMBOLS IS AVAILABLE ON REQUEST



Revisions shown in purple compiled from aerial photographs  
taken 1975. This information not field checked  
Purple tint indicates extension of urban areas

ROAD CLASSIFICATION  
Heavy-duty ——— Light-duty ———  
Medium-duty ——— Unimproved dirt ———  
Interstate Route ——— U.S. Route ——— State Route ———

EUGENE EAST, OREG.  
N4400—W12300/7.5

1967  
PHOTOREVISED 1975  
AMS 1372 II SE—SERIES V892

USGS  
Historical File  
Topographic Division

MAY 23 1977  
460