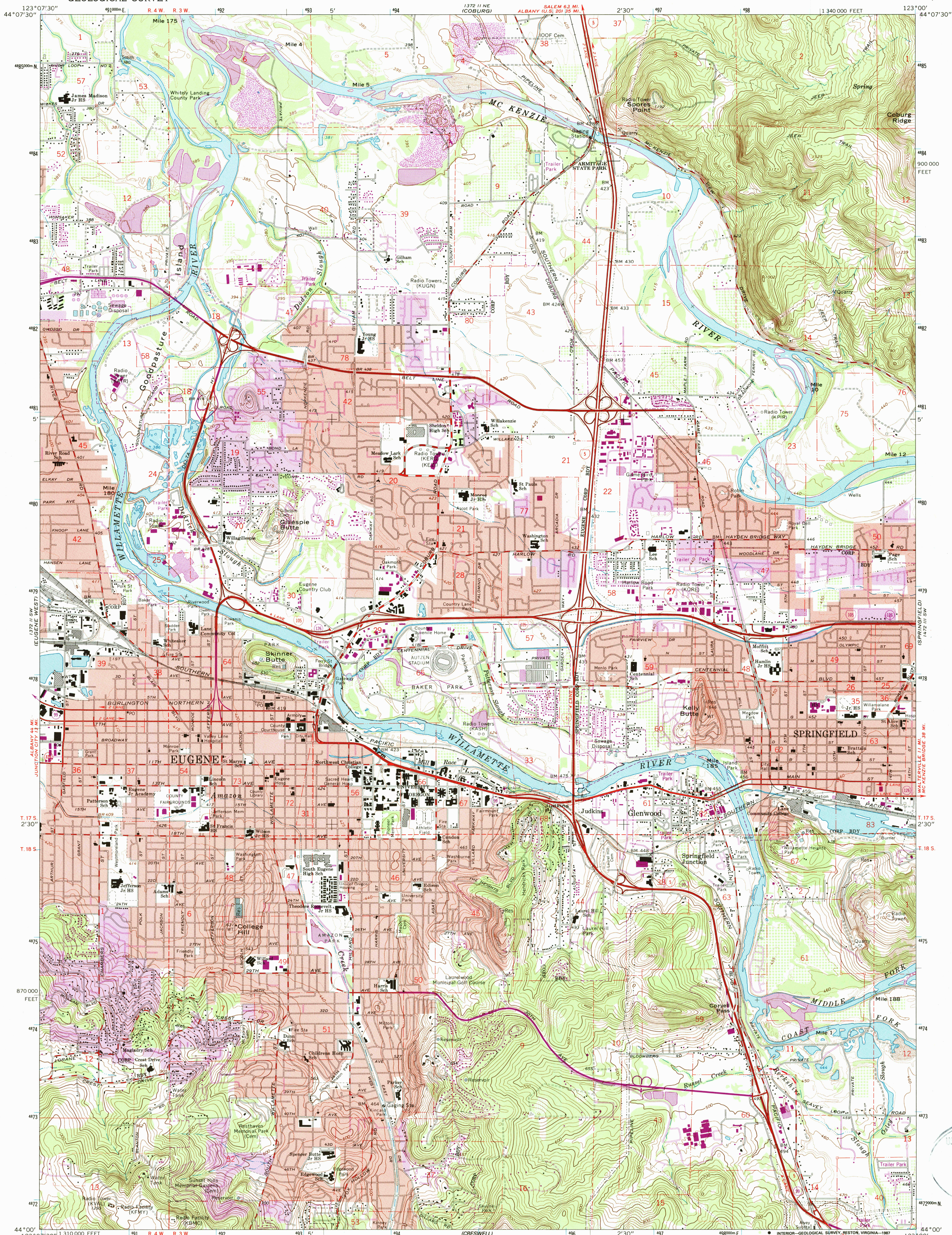
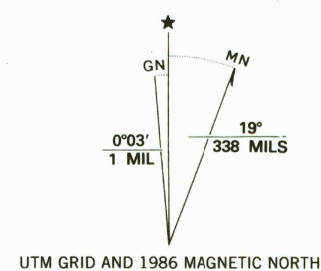


UNITED STATES  
DEPARTMENT OF THE INTERIOR  
GEOLOGICAL SURVEY

EUGENE EAST QUADRANGLE  
OREGON—LANE CO.  
7.5 MINUTE SERIES (TOPOGRAPHIC)



Mapped, edited, and published by the Geological Survey  
Control by USGS, NOS/NOAA, and State of Oregon  
Topography by photogrammetric methods from aerial  
photographs taken 1965. Field checked 1967  
Polyconic projection. 1927 North American datum  
10,000-foot grid based on Oregon coordinate system,  
south zone  
1000-meter Universal Transverse Mercator grid ticks,  
zone 10, shown in blue  
To place on the predicted North American Datum 1983,  
move the projection lines 22 meters north and  
95 meters east as shown by dashed corner ticks  
Red tint indicates areas in which only landmark buildings are shown  
Purple tint indicates extension of urban areas



SCALE 1:24,000  
1 000 0 1000 2000 3000 4000 5000 6000 7000 FEET  
1 0 1 KILOMETER  
CONTOUR INTERVAL 20 FEET  
DOTTED LINES REPRESENT 5-FOOT CONTOURS  
NATIONAL GEODETIC VERTICAL DATUM OF 1929

ROAD CLASSIFICATION  
Heavy-duty ——— Light-duty ———  
Medium-duty ——— Unimproved dirt ———  
Interstate Route U.S. Route State Route  
QUADRANGLE LOCATION  
Revisions shown in purple compiled from aerial  
photographs taken 1982 and other sources  
This information not field checked. Map edited 1986

EUGENE EAST, OREG.  
44123-A1-TF-024  
1967  
PHOTOREVISED 1986  
DMA 1372 II SE-SERIES V892