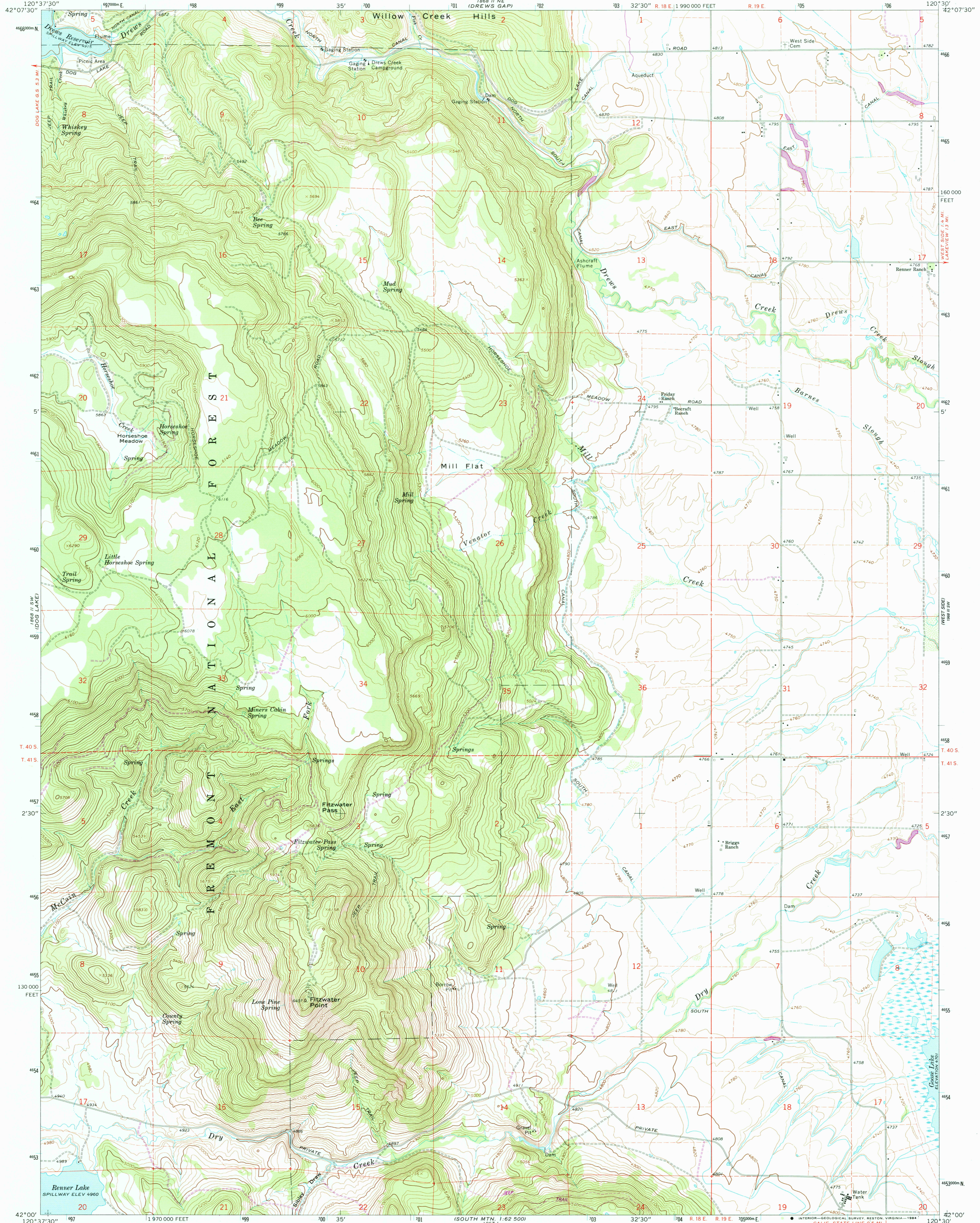


UNITED STATES
DEPARTMENT OF THE INTERIOR
GEOLOGICAL SURVEY

FITZWATER POINT QUADRANGLE
OREGON-LAKE CO.
7.5 MINUTE SERIES (TOPOGRAPHIC)



Map edited, and published by the Geological Survey
Control by USGS and NOS/NOAA

Topography by photogrammetric methods from aerial
photographs taken 1960 and 1962. Field checked 1964

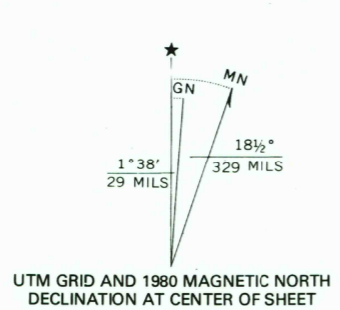
Polycyclic projection. 1927 North American datum
10,000-foot grid based on Oregon coordinate system,
south zone

1000-meter Universal Transverse Mercator grid ticks,
zone 10, shown in blue

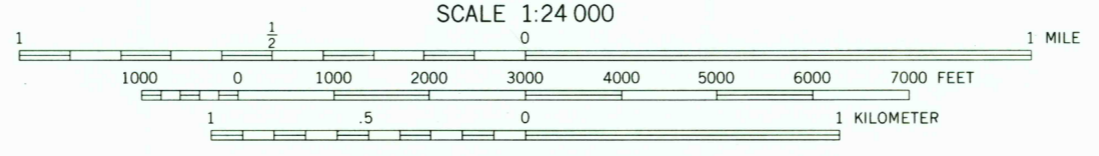
To place on the predicted North American Datum 1983
move the projection lines 18 meters north and
89 meters east as shown by dashed corner ticks

There may be private inholdings within the boundaries of
the National or State reservations shown on this map

Fine red dashed lines indicate selected fence lines



UTM GRID AND 1980 MAGNETIC NORTH
DECLINATION AT CENTER OF SHEET



SCALE 1:24 000
CONTOUR INTERVAL 20 FEET
DOTTED LINES REPRESENT 10-FOOT CONTOURS
NATIONAL GEODETIC VERTICAL DATUM OF 1929



OREGON
QUADRANGLE LOCATION

ROAD CLASSIFICATION

Medium-duty	Light-duty
Unimproved dirt	

FITZWATER POINT, OREG.
N4200-W12030/7.5

1964
PHOTOREVISED 1980
DMA 1868 II SE-SERIES Y892

THIS MAP COMPLIES WITH NATIONAL MAP ACCURACY STANDARDS
FOR SALE BY U.S. GEOLOGICAL SURVEY, DENVER, COLORADO 80225, OR RESTON, VIRGINIA 22092
A FOLDER DESCRIBING TOPOGRAPHIC MAPS AND SYMBOLS IS AVAILABLE ON REQUEST

Revisions shown in purple compiled from aerial photographs
taken 1979 and other source data. This information not
field checked. Map edited 1980

RETURN TO:
USGS AND HISTORICAL MAP ARCHIVES

(WILLOW CREEK) 1:62 500
1868 II SE (DOG LAKE)
1868 II NE (DREWS GAP)
1868 II SW (DOG LAKE)
1868 II SE (WILLOW CREEK)