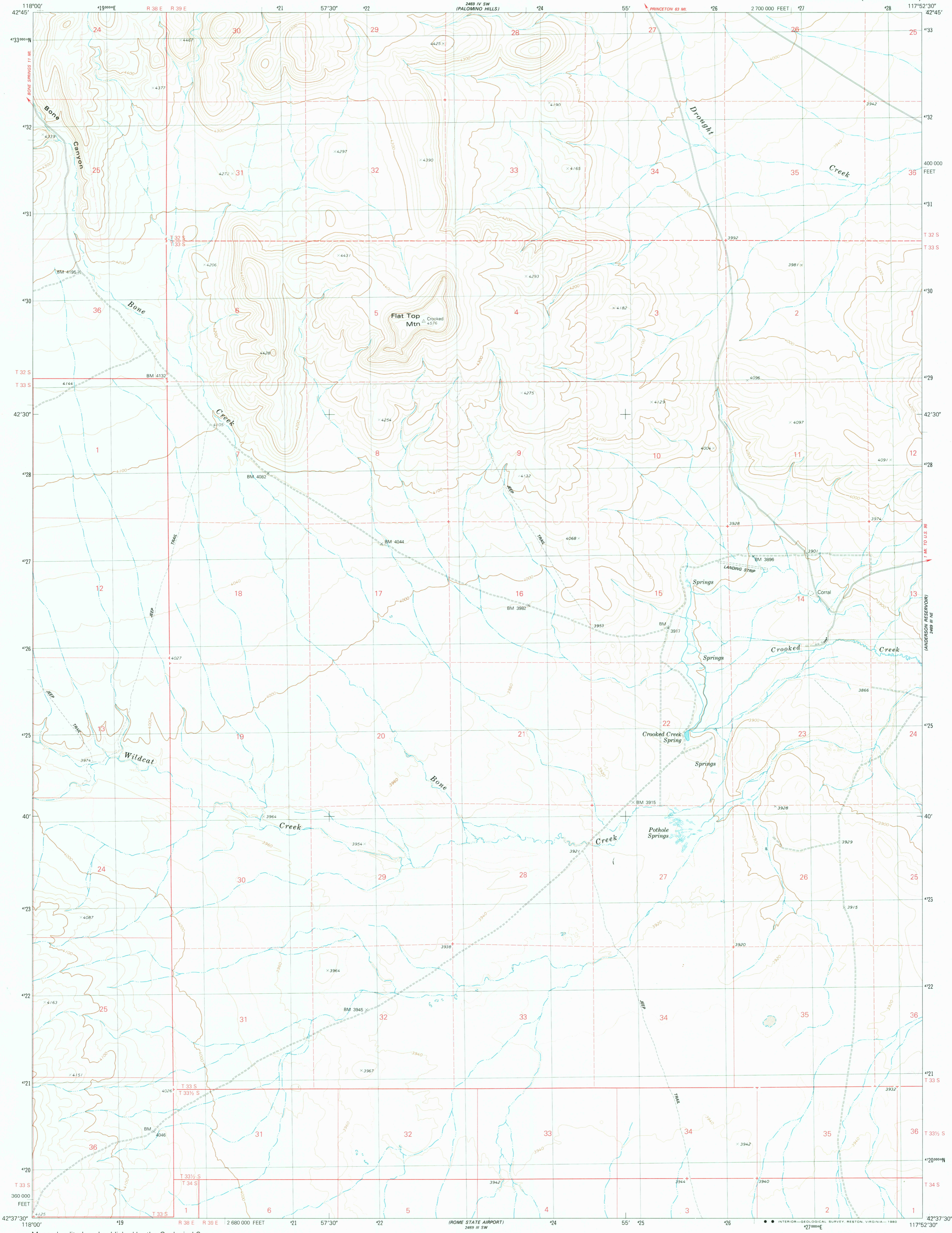


42° 37' 30" N  
117° 52' 30" W



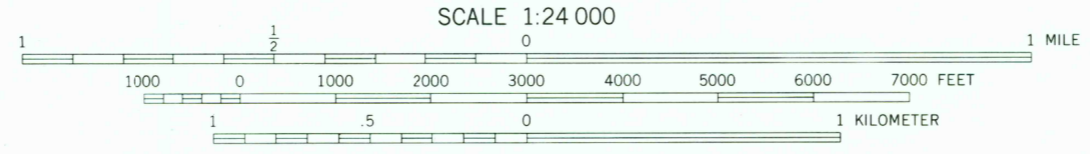
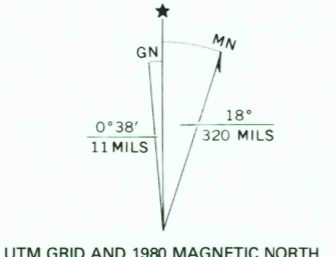
Mapped, edited, and published by the Geological Survey

Control by USGS and NOS/NOAA  
Topography by photogrammetric methods from aerial photographs taken 1973. Field checked 1975  
Map edited 1980

Projection and 10,000-foot grid ticks: Oregon coordinate system, south zone (Lambert conformal conic)  
1000-meter Universal Transverse Mercator grid, zone 11  
1927 North American Datum

To place on the predicted North American Datum 1983  
move the projection lines 16 meters north and  
81 meters east as shown by dashed corner ticks

Fine red dashed lines indicate selected fence and field lines  
where generally visible on aerial photographs  
This information is uncheckd



CONTOUR INTERVAL 20 FEET  
DOTTED LINES REPRESENT 10-FOOT CONTOURS  
NATIONAL GEODETIC VERTICAL DATUM OF 1929

THIS MAP COMPLIES WITH NATIONAL MAP ACCURACY STANDARDS  
FOR SALE BY U. S. GEOLOGICAL SURVEY, DENVER, COLORADO 80225, OR RESTON, VIRGINIA 22092  
A FOLDER DESCRIBING TOPOGRAPHIC MAPS AND SYMBOLS IS AVAILABLE ON REQUEST



ROAD CLASSIFICATION

Primary highway, hard surface	Light-duty road, hard or improved surface
Secondary highway, hard surface	Unimproved road
Interstate Route	U. S. Route
	State Route

USGS  
Historical File  
Topographic Division

FLAT TOP MTN., OREG.  
N4237.5-W11752.5/7.5

AUG 19 1980