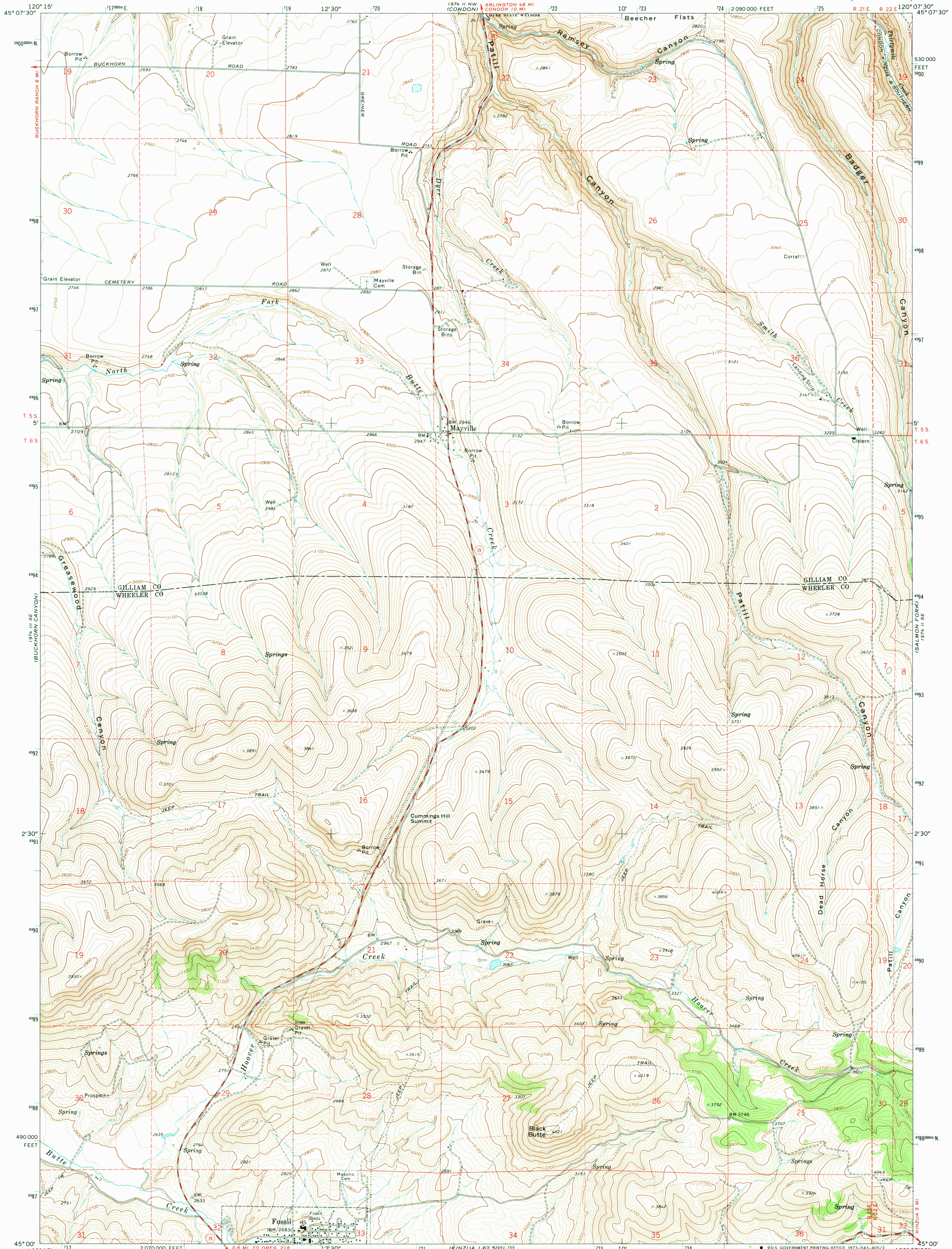


UNITED STATES
DEPARTMENT OF THE INTERIOR
GEOLOGICAL SURVEY

FOSSIL NORTH QUADRANGLE
OREGON
7.5 MINUTE SERIES (TOPOGRAPHIC)



Mapped, edited, and published by the Geological Survey

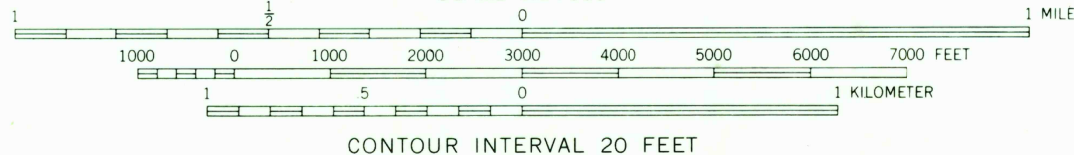
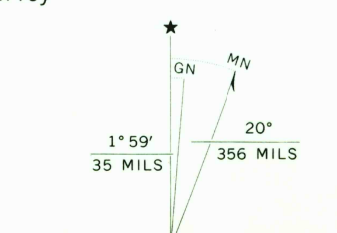
Control by USGS and USC&GS

Topography by photogrammetric methods from aerial photographs taken 1969. Field checked 1970

Projection and 10,000-foot grid ticks: Oregon coordinate system, north zone (Lambert conformal conic)

1000-meter Universal Transverse Mercator grid ticks, zone 10, shown in blue. 1927 North American datum

Fine red dashed lines indicate selected fence lines



SCALE 1:24,000

CONTOUR INTERVAL 20 FEET

DATUM IS MEAN SEA LEVEL



ROAD CLASSIFICATION

Primary highway, hard surface	Light-duty road, hard or improved surface
Secondary highway, hard surface	Unimproved road
Interstate Route	U.S. Route
	State Route

THIS MAP COMPLIES WITH NATIONAL MAP ACCURACY STANDARDS
FOR SALE BY U.S. GEOLOGICAL SURVEY, DENVER, COLORADO 80225, OR WASHINGTON, D. C. 20242
A FOLDER DESCRIBING TOPOGRAPHIC MAPS AND SYMBOLS IS AVAILABLE ON REQUEST

FOSSIL NORTH, OREG.
N4500-W12007.5/7.5
1970

AMS 1974 II SW-SERIES V892

DEC 5 1973
Hoen
2570
53plains