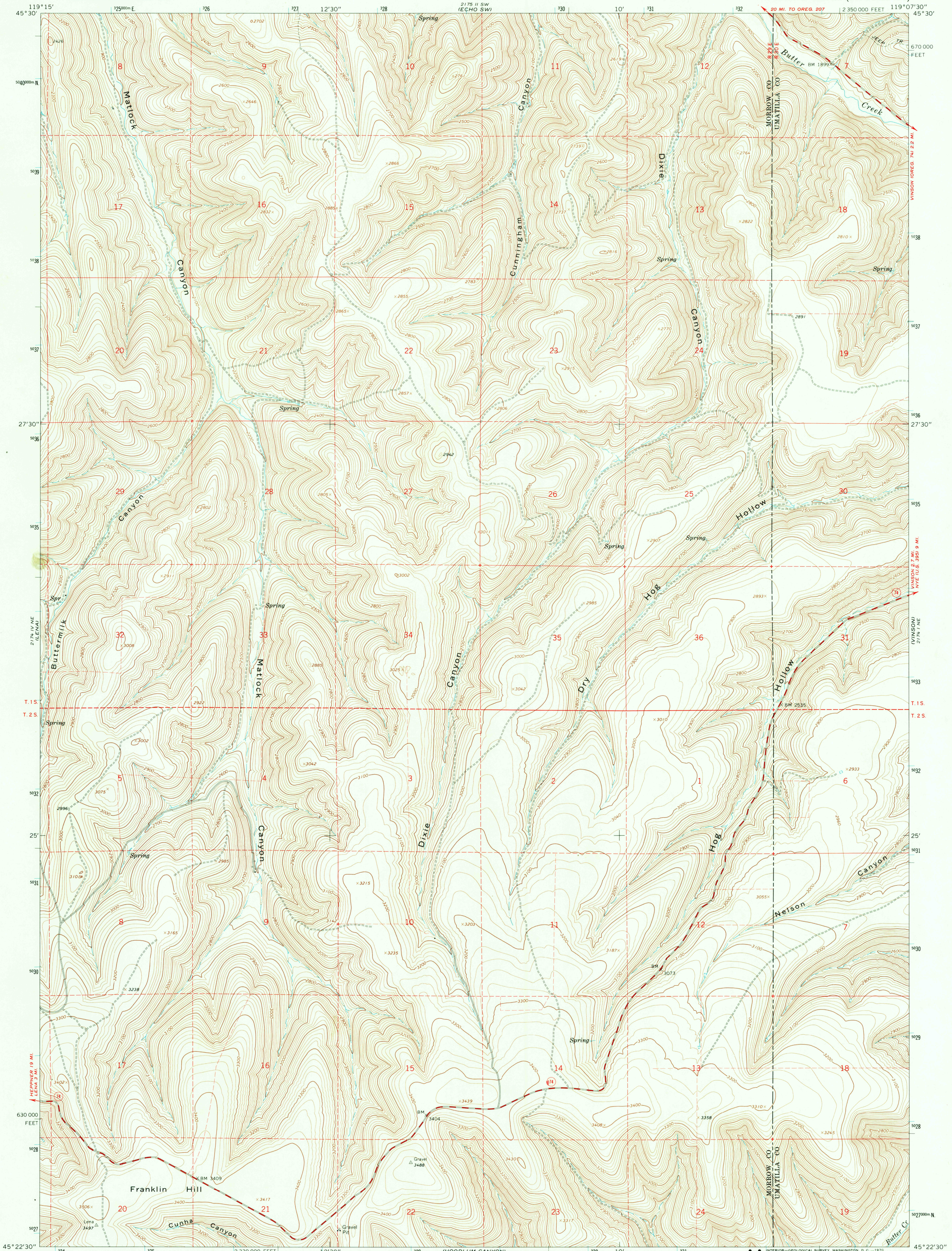
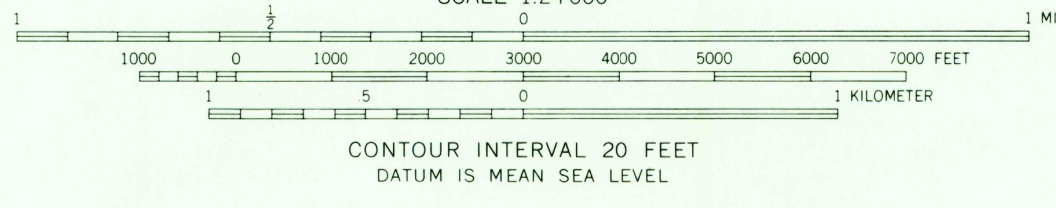
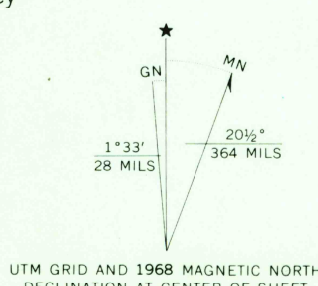


UNITED STATES
DEPARTMENT OF THE INTERIOR
GEOLOGICAL SURVEY

FRANKLIN HILL QUADRANGLE
OREGON
7.5 MINUTE SERIES (TOPOGRAPHIC)



Mapped, edited, and published by the Geological Survey
Control by USGS and USC&GS
Topography by photogrammetric methods from aerial
photographs taken 1965. Field checked 1968
Polyconic projection. 1927 North American datum
10,000-foot grid based on Oregon coordinate system,
north zone
1000-meter Universal Transverse Mercator grid ticks,
zone 11, shown in blue
Fine red dashed lines indicate selected fence lines



USGS
Historical File
Topographic Division

ROAD CLASSIFICATION
Medium-duty ————
Light-duty ————
Unimproved dirt ————
State Route ○



U.S.G.S.
FILE COPY
TOPOGRAPHIC DIVISION

FRANKLIN HILL, OREG.
N4522.5—W11907.5/7.5
1968
AMS 2174 1 NW—SERIES W892

NOV 17 1970

HISTORICAL