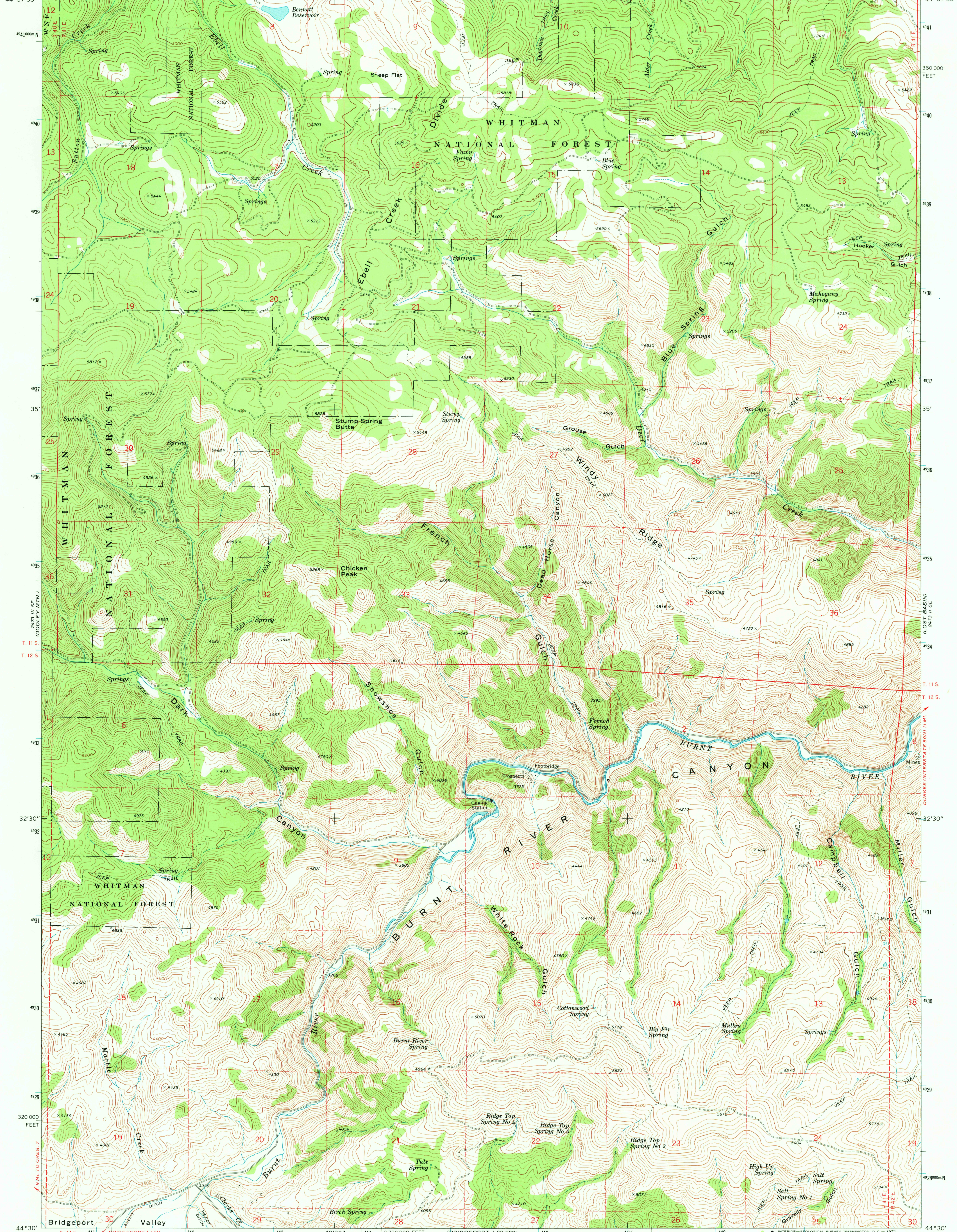
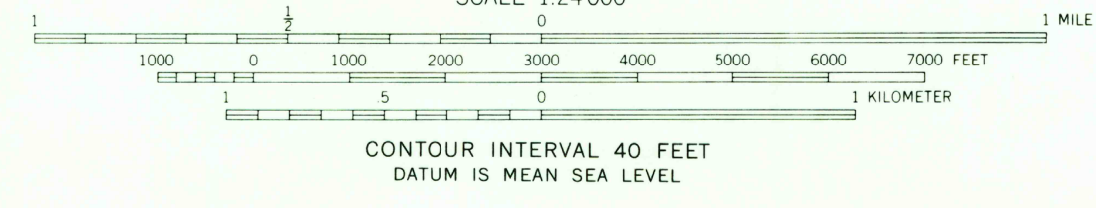
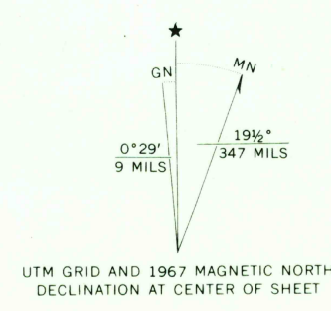


117°45' 44°37'30" 441000 E 42 43 42°30' 44 45 2473 II NW (ENCINA) 46 47 40' 274000 FEET 5 MI TO INTERSTATE 80N 117°37'30" 44°37'30"



Mapped, edited, and published by the Geological Survey
Control by USGS and USC&GS
Topography by photogrammetric methods from aerial
photographs taken 1966. Field checked 1967
Polyconic projection. 1927 North American datum
10,000-foot grid based on Oregon coordinate system,
north zone
1000-meter Universal Transverse Mercator grid ticks,
zone 11, shown in blue
Fine red dashed lines indicate selected fence lines
Certain land lines are omitted because of insufficient data



ROAD CLASSIFICATION
Light-duty Unimproved dirt

FRENCH GULCH, OREG.
N4430-W11737.5/7.5

THIS MAP COMPLIES WITH NATIONAL MAP ACCURACY STANDARDS
FOR SALE BY U. S. GEOLOGICAL SURVEY, DENVER, COLORADO 80225, OR WASHINGTON, D. C. 20242
A FOLDER DESCRIBING TOPOGRAPHIC MAPS AND SYMBOLS IS AVAILABLE ON REQUEST

USGS HISTORICAL FILE TOPOGRAPHIC DIVISION
1967
AMS 2473 II SW - SERIES V892

HISTORICAL
2070
NOV 5 1977