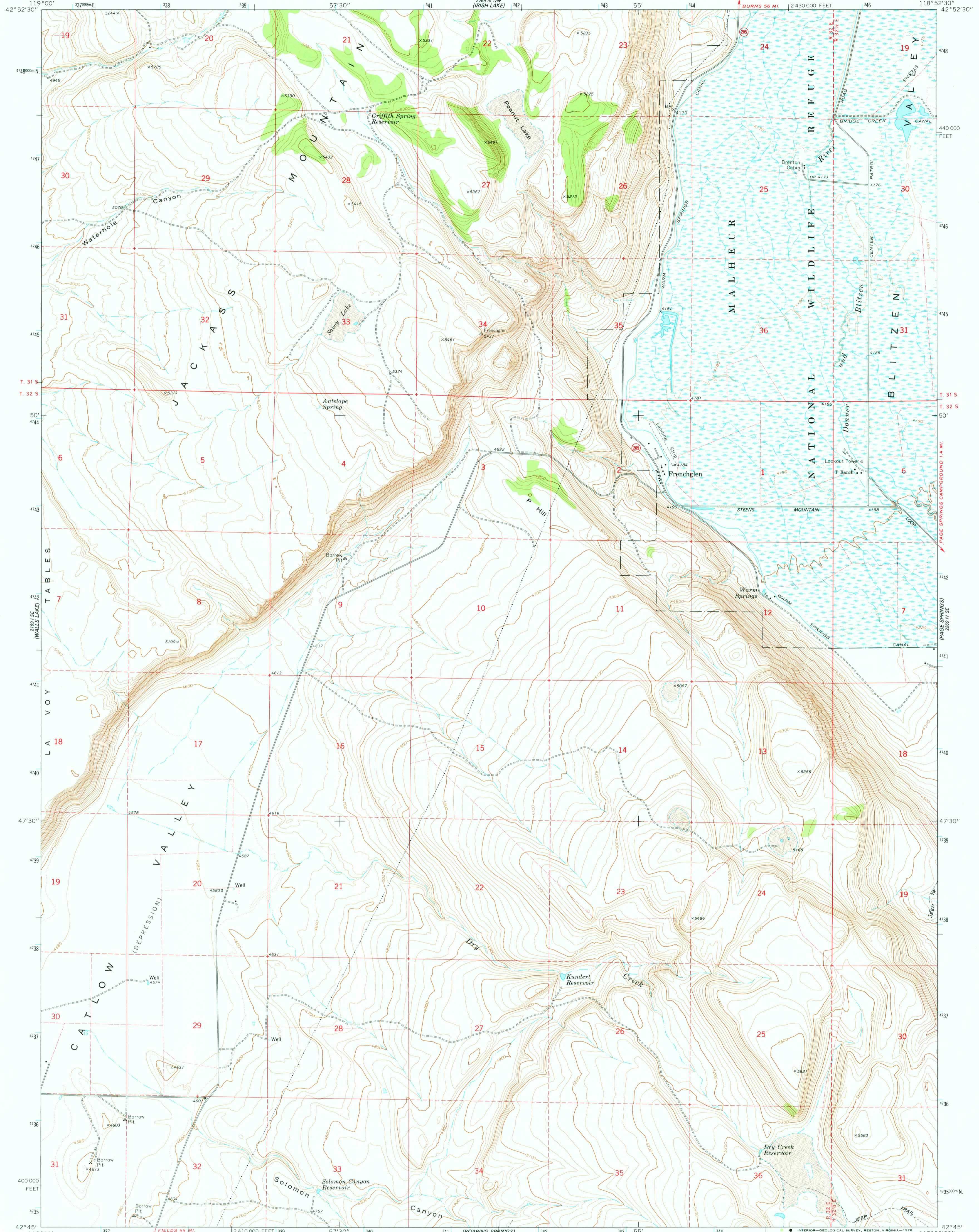


119°00' 42°52'30"

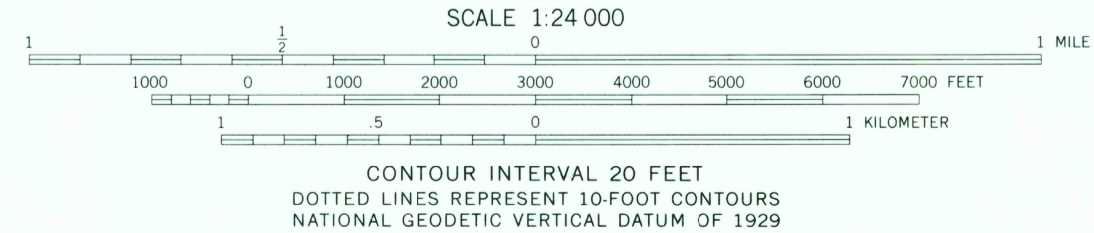
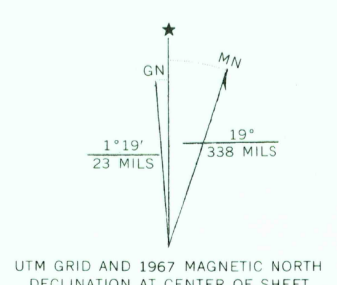
UNITED STATES DEPARTMENT OF THE INTERIOR GEOLOGICAL SURVEY

FRENCHGLEN QUADRANGLE OREGON—HARNEY CO. 7.5 MINUTE SERIES (TOPOGRAPHIC)

118°52'30" 42°52'30"



Mapped, edited, and published by the Geological Survey
Control by USGS and USC&GS
Topography by photogrammetric methods from aerial photographs taken 1966 and planetable surveys 1967
Polyconic projection. 1927 North American datum 10,000-foot grid based on Oregon coordinate system, south zone.
1000-meter Universal Transverse Mercator grid ticks, zone 11, shown in blue
Fine red dashed lines indicate selected fence lines



ROAD CLASSIFICATION

Primary highway, hard surface	Light duty road, hard or improved surface
Secondary highway, hard surface	Unimproved road
Interstate Route	U. S. Route
	State Route

THIS MAP COMPLIES WITH NATIONAL MAP ACCURACY STANDARDS FOR SALE BY U. S. GEOLOGICAL SURVEY, DENVER, COLORADO 80225, OR RESTON, VIRGINIA 22092 A FOLDER DESCRIBING TOPOGRAPHIC MAPS AND SYMBOLS IS AVAILABLE ON REQUEST

USGS Historical File Topographic Division

JUL 17 1978
FRENCHGLEN, OREG.
N4245-W11852.5/7.5
1967
AMS 2269 IV SW—SERIES V892

119°00' 42°52'30"

IBUTLER HILL 2188' M

118°52'30" 42°52'30"

2269 IV SW (IRISH LAKE) RESERVOIR

PAGE SPRINGS CAMPGROUND 1.4 MI. (PAGE SPRINGS) 2269 IV SE