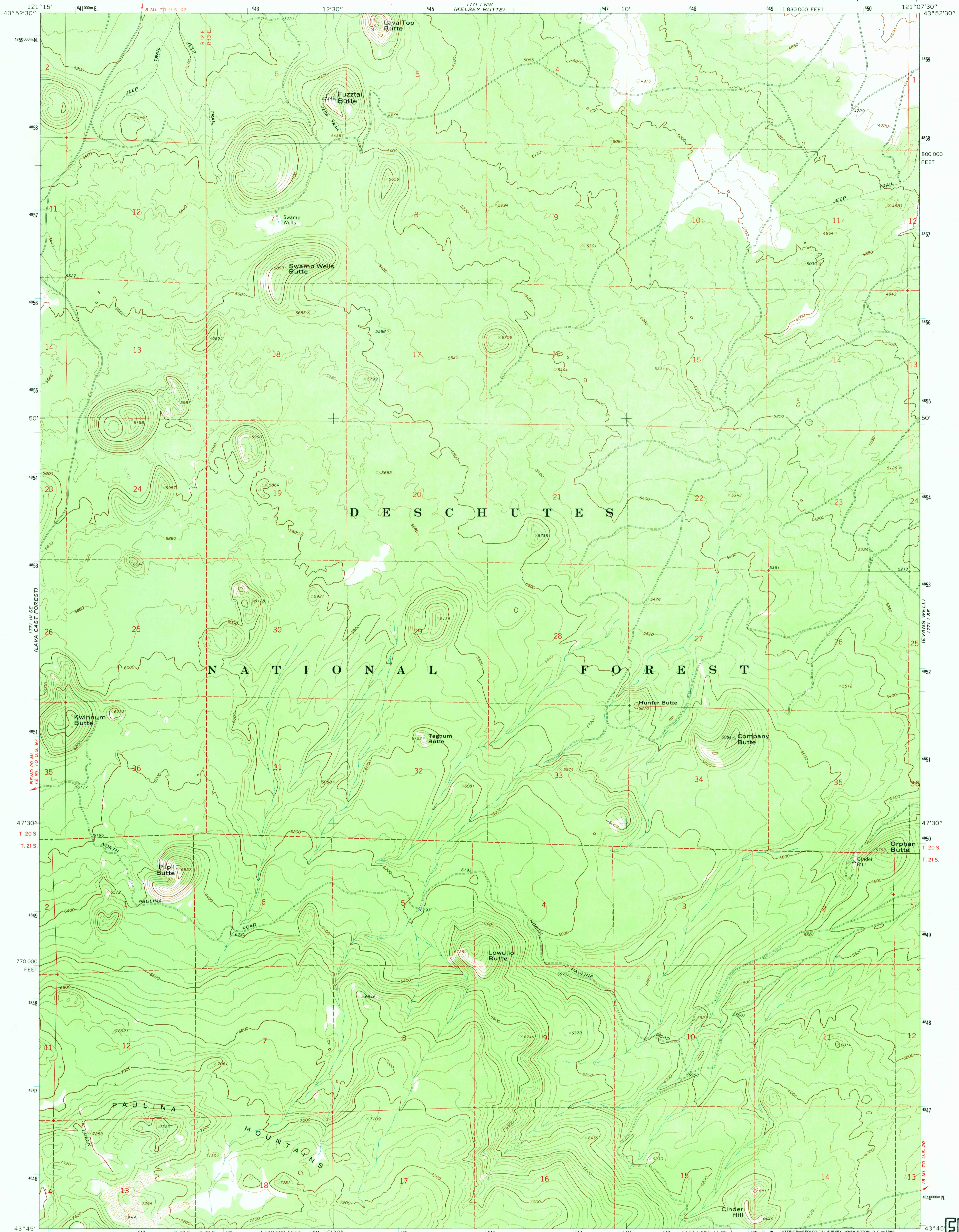
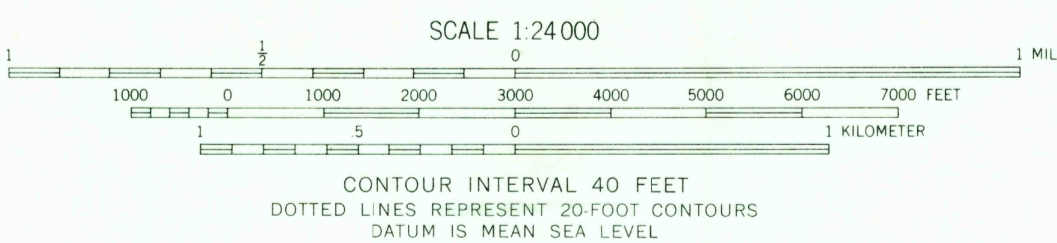
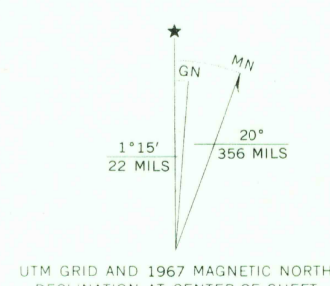


1771 NW  
(PAULINA PEAK)



Mapped, edited, and published by the Geological Survey  
Control by USGS and USC&GS  
Topography by photogrammetric methods from aerial  
photographs taken 1963. Field checked 1967  
Polyconic projection, 1927 North American datum  
10,000-foot grid based on Oregon coordinate system,  
south zone  
1000-meter Universal Transverse Mercator grid ticks,  
zone 10, shown in blue



ROAD CLASSIFICATION  
Light-duty ————— Unimproved dirt —————

THIS MAP COMPLIES WITH NATIONAL MAP ACCURACY STANDARDS  
FOR SALE BY U.S. GEOLOGICAL SURVEY, DENVER, COLORADO 80225, OR WASHINGTON, D. C. 20242  
A FOLDER DESCRIBING TOPOGRAPHIC MAPS AND SYMBOLS IS AVAILABLE ON REQUEST

FUZZTAIL BUTTE, OREG.  
N4345—W12107.5/7.5  
1967  
AMS 1771 I SW—SERIES V892

U.S.G.S.  
FILE COPY  
TOPOGRAPHIC DIVISION

2755  
NOV 10 1969

HISTORICAL