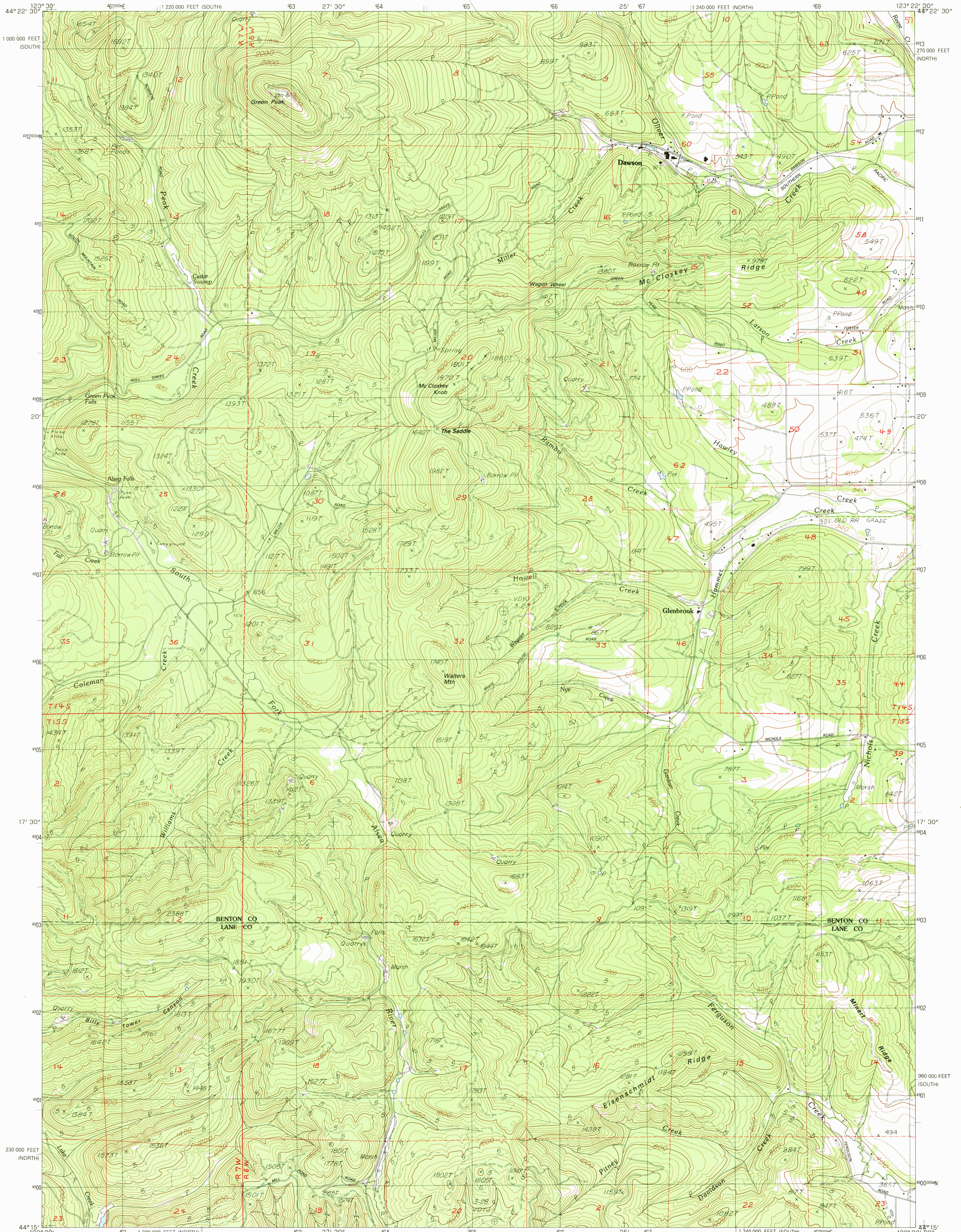


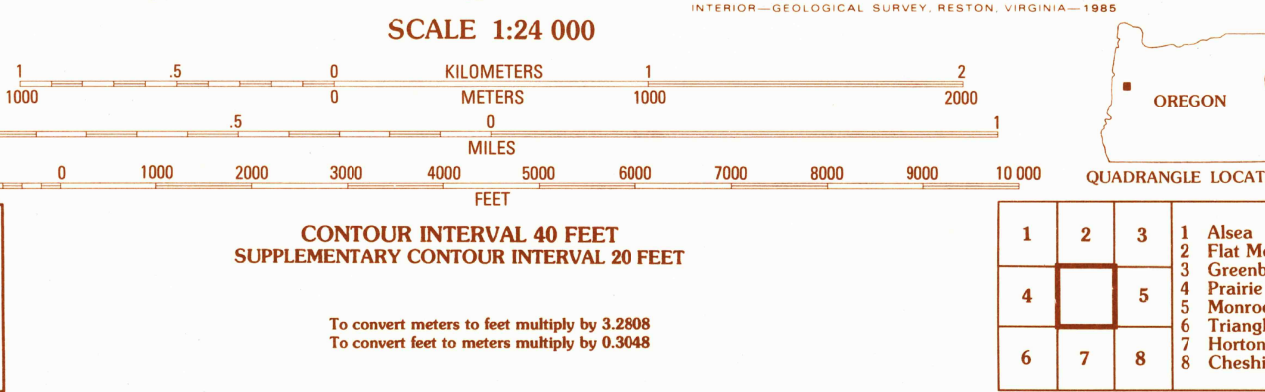
UNITED STATES
DEPARTMENT OF THE INTERIOR
GEOLOGICAL SURVEY

GLENBROOK QUADRANGLE
OREGON
7.5 MINUTE SERIES (TOPOGRAPHIC)



PRODUCED BY THE UNITED STATES GEOLOGICAL SURVEY CONTROL BY USGS, NOS/NOAA COMPILED FROM AERIAL PHOTOGRAPHS TAKEN 1975-76 FIELD CHECKED 1980 MAP EDITED 1984 PROJECTION LAMBERT CONFORMAL CONIC GRID: 1000-METER UNIVERSAL TRANSVERSE MERCATOR ZONE 10 10,000-FOOT STATE GRID TICKS, OREGON, NORTH AND SOUTH ZONES UTM GRID DECLINATION 4918 WEST 1980 MAGNETIC NORTH DECLINATION 1990 EAST VERTICAL DATUM NATIONAL GEODETIC VERTICAL DATUM OF 1929 HORIZONTAL DATUM 1927 NORTH AMERICAN DATUM To place on the predicted North American Datum of 1983, move the projection lines as shown by dashed corner ticks (23 meters north / 96 meters east). There may be private inholdings within the boundaries of any Federal and State Reservations shown on this map.

PROVISIONAL MAP
Produced from original manuscript drawings. Information shown as of date of field check.



ROAD LEGEND

Improved Road.....
Unimproved Road.....
Trail.....

Interstate Route U.S. Route State Route

GLENBROOK, OREG.
PROVISIONAL EDITION 1984