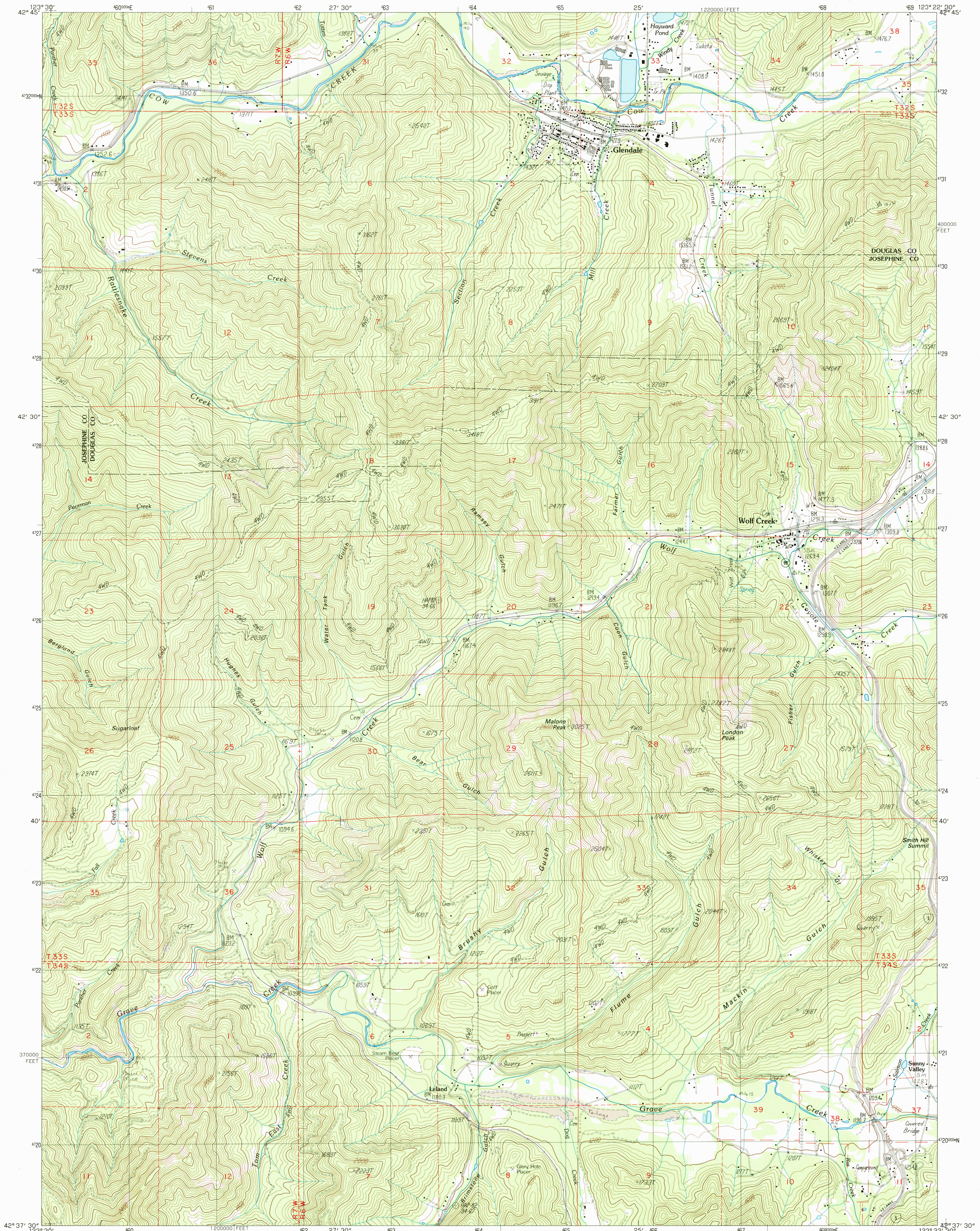


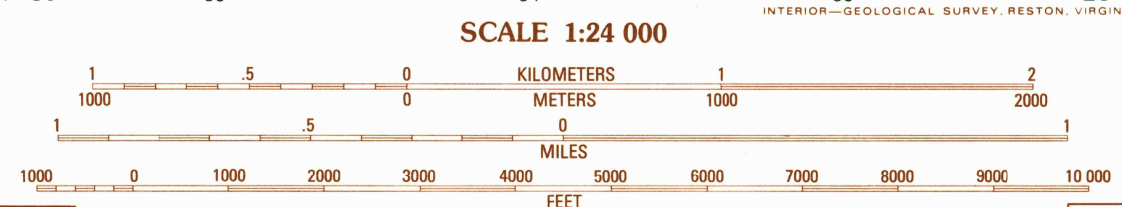
UNITED STATES  
DEPARTMENT OF THE INTERIOR  
GEOLOGICAL SURVEY

GLENDALE QUADRANGLE  
OREGON  
7.5 MINUTE SERIES (TOPOGRAPHIC)



PRODUCED BY THE UNITED STATES GEOLOGICAL SURVEY  
CONTROL BY U.S.G.S. NOR. STATE OF OREGON  
COMPILED FROM AERIAL PHOTOGRAPHS TAKEN 1982  
FIELD CHECKED 1983. MAP EDITED 1986  
PROJECTION LAMBERT CONFORMAL CONIC  
GRID: 1000-METER UNIVERSAL TRANSVERSE MERCATOR ZONE 10  
10,000-FOOT STATE GRID TICKS  
UTM GRID DECLINATION 018° WEST  
1980 MAGNETIC NORTH DECLINATION 18°30' EAST  
VERTICAL DATUM 1927 NORTH AMERICAN DATUM  
To place on the predicted North American Datum of 1983,  
move the projection lines as shown by dashed corner ticks  
(.21 meters north, .96 meters east).  
There may be private inholdings within the boundaries of any  
Federal and State Reservations shown on this map.  
No distinction made between houses, barns, and other buildings.

**PROVISIONAL MAP**  
Produced from original  
manuscript drawings. Infor-  
mation shown as of date of  
photography.



1	2	3	1 Rabbit Mtn.
4	5	6	2 McCullough Creek
7	8	9	3 Quins Creek
			4 Mt. Reuben
			5 Golden
			6 Galice
			7 Merlin
			8 Sexton Mtn.

**ROAD LEGEND**  
Improved Road.....  
Unimproved Road.....  
Trail.....  
Interstate Route U.S. Route State Route

GLENDALE, OREG.  
PROVISIONAL EDITION 1986

42123-F4-TF-024

