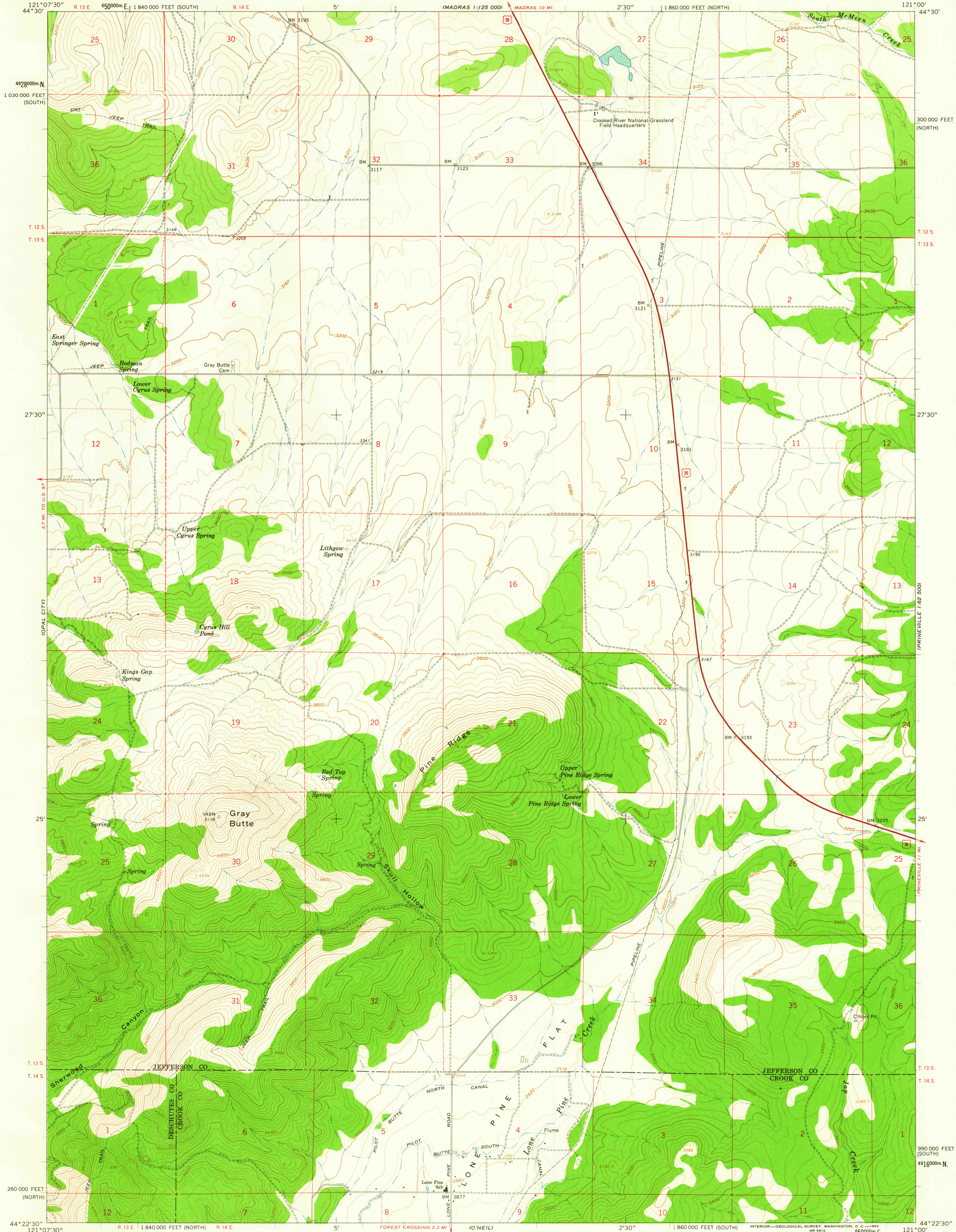
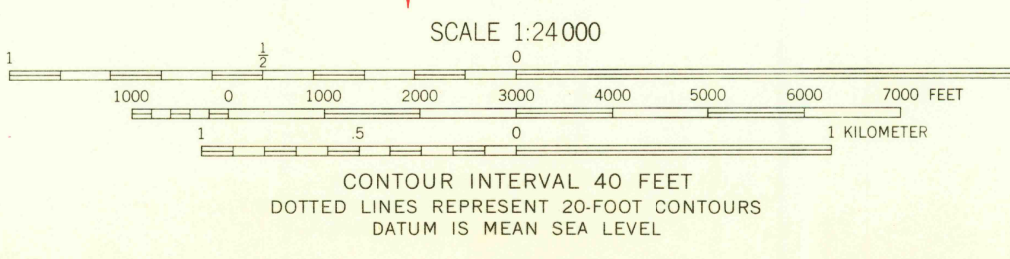
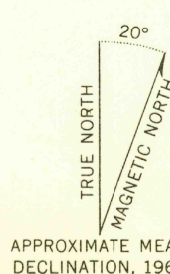


UNITED STATES  
DEPARTMENT OF THE INTERIOR  
GEOLOGICAL SURVEY

GRAY BUTTE QUADRANGLE  
OREGON  
7.5 MINUTE SERIES (TOPOGRAPHIC)



Mapped, edited, and published by the Geological Survey  
Control by USGS and USC&GS  
Topography by photogrammetric methods from aerial  
photographs taken 1957. Field checked 1962.  
Polyconic projection. 1927 North American datum  
10,000-foot grids based on Oregon coordinate system,  
north and south zones  
1000-meter Universal Transverse Mercator grid ticks,  
zone 10, shown in blue  
Fine red dashed lines indicate selected fence lines



ROAD CLASSIFICATION  
Heavy-duty ——— Light-duty ———  
Unimproved dirt ———  
U. S. Route

USGS  
Historical File  
Topographic Division

GRAY BUTTE, OREG.  
N4422.5—W12100/7.5

1962

THIS MAP COMPLIES WITH NATIONAL MAP ACCURACY STANDARDS  
FOR SALE BY U. S. GEOLOGICAL SURVEY, DENVER 25, COLORADO OR WASHINGTON 25, D. C.  
A FOLDER DESCRIBING TOPOGRAPHIC MAPS AND SYMBOLS IS AVAILABLE ON REQUEST

APR 24 1963  
HISTORICAL