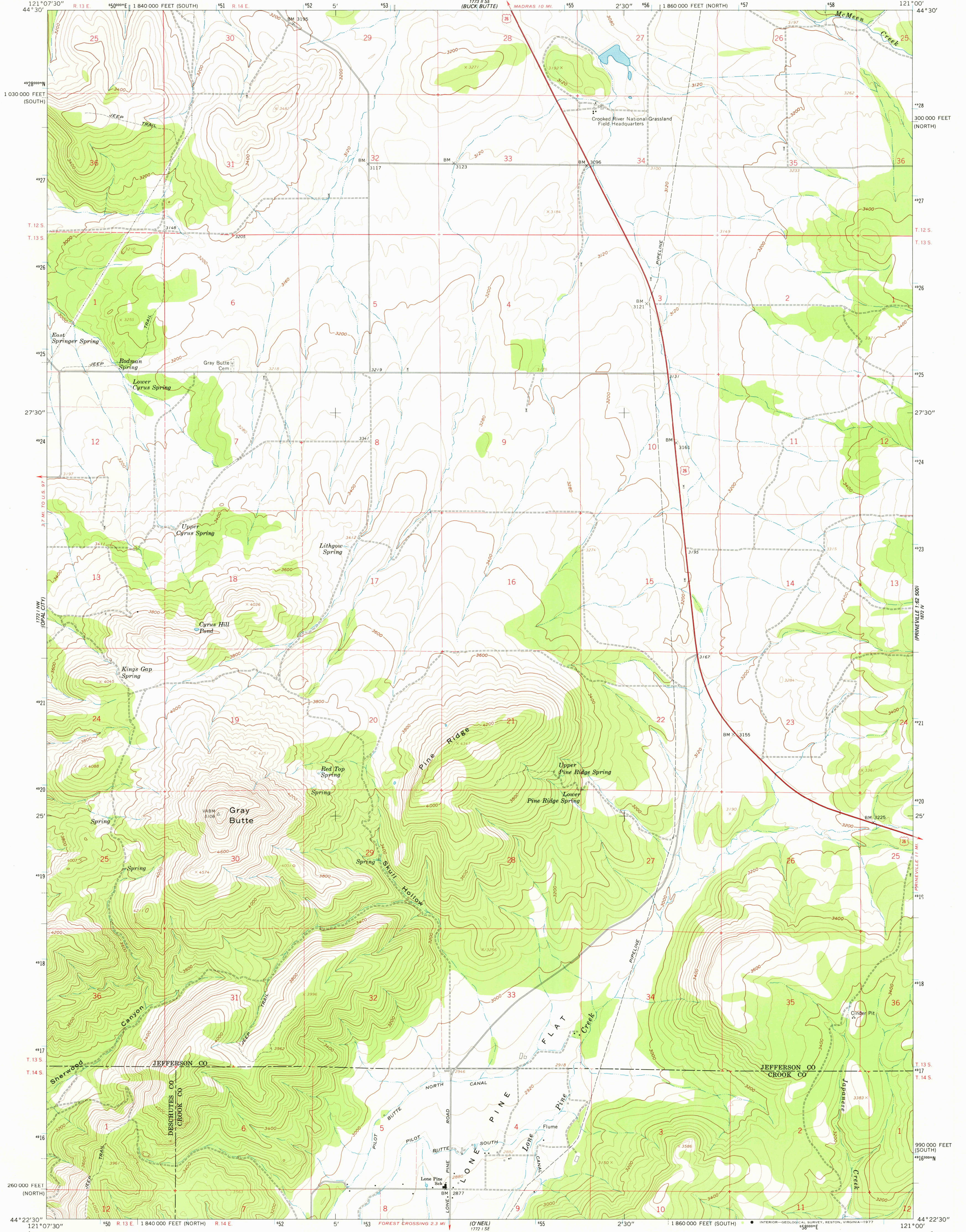


UNITED STATES
DEPARTMENT OF THE INTERIOR
GEOLOGICAL SURVEY

GRAY BUTTE QUADRANGLE
OREGON
7.5 MINUTE SERIES (TOPOGRAPHIC)



Mapped, edited, and published by the Geological Survey

Control by USGS and USC&GS

Topography by photogrammetric methods from aerial photographs taken 1957. Field checked 1962

Polyconic projection. 1927 North American datum

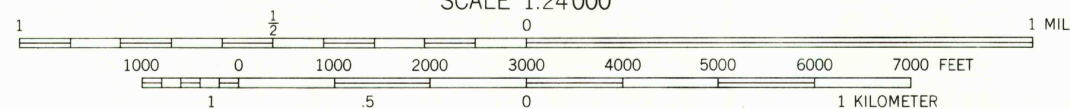
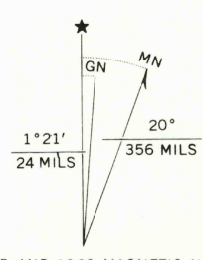
10,000-foot grids based on Oregon coordinate system, north and south zones

1000-meter Universal Transverse Mercator grid ticks, zone 10, shown in blue

Fine red dashed lines indicate selected fence lines

Map photoinspected 1975

No major culture or drainage changes observed



CONTOUR INTERVAL 40 FEET
DOTTED LINES REPRESENT 20-FOOT CONTOURS
NATIONAL GEODETIC VERTICAL DATUM OF 1929

THIS MAP COMPLIES WITH NATIONAL MAP ACCURACY STANDARDS
FOR SALE BY U.S. GEOLOGICAL SURVEY, DENVER, COLORADO 80225, OR RESTON, VIRGINIA 22092
A FOLDER DESCRIBING TOPOGRAPHIC MAPS AND SYMBOLS IS AVAILABLE ON REQUEST



ROAD CLASSIFICATION
Heavy-duty ——— Light-duty ———
Unimproved dirt - - - - -
U.S. Route

USGS
Historical File
Topographic Division

GRAY BUTTE, OREG.
N4422.5-W12100/7.5

1962

AMS 1772 I NE—SERIES V892

PHOTOINSPECTED 1975

JAN 4 1977

2756