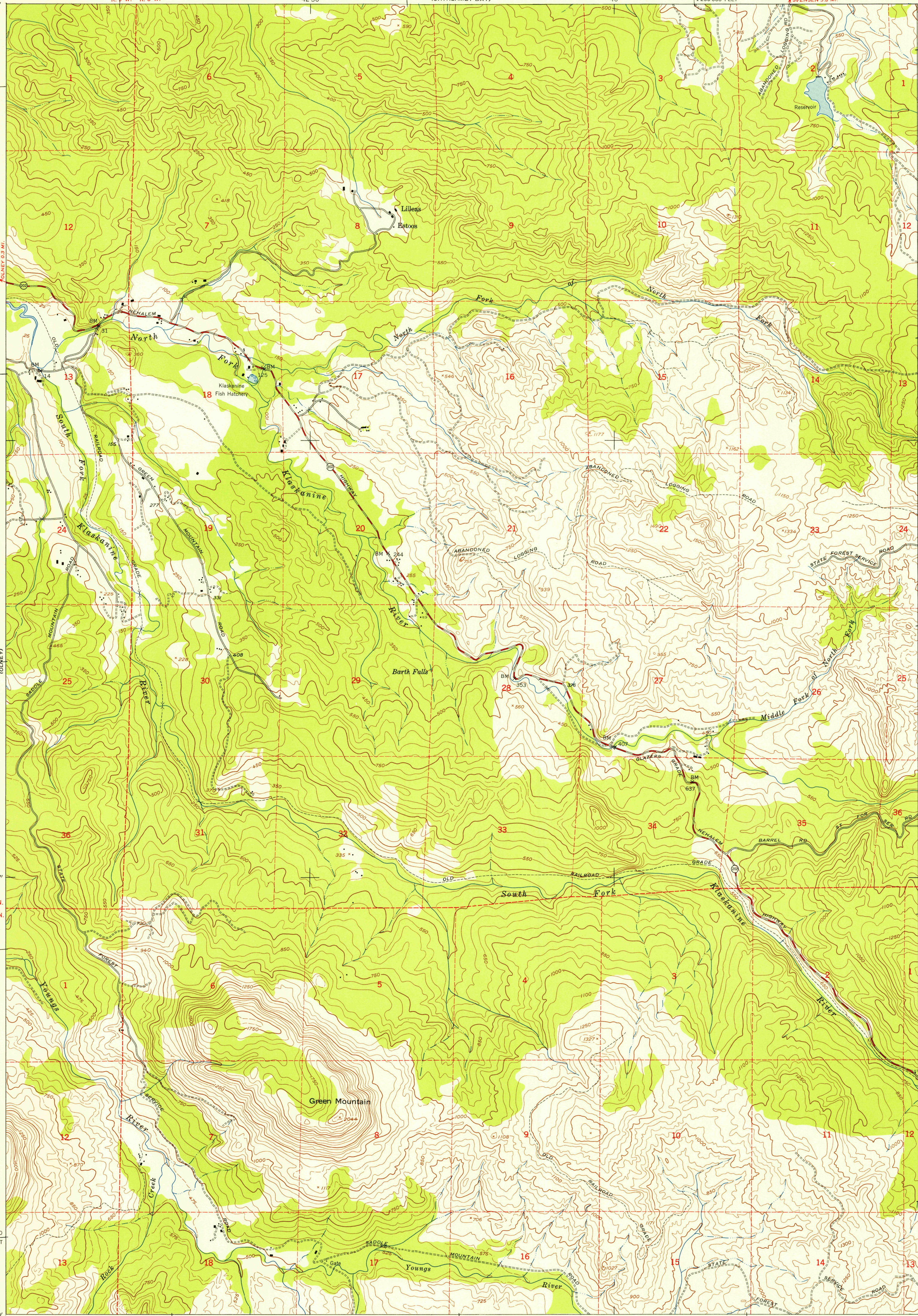


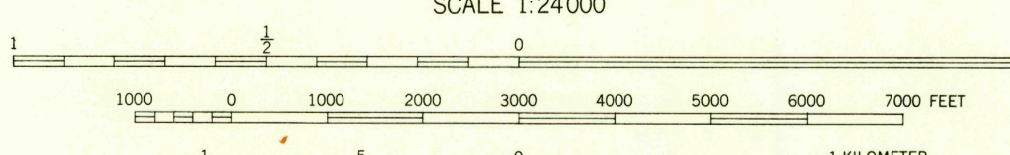
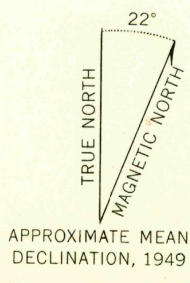
123°45' 46°07'30" R. 9 W. R. 8 W. 42°30' 40' 123°37'30" 46°07'30"

U.S.G.S.
FILE COPY
TOPOGRAPHIC DIVISION



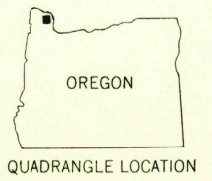
CAPE FALCON
1:62,500

Mapped by the Army Map Service
Published for civil use by the Geological Survey
Control by USC&GS and USCE
Topography from aerial photographs by multiplex methods
Aerial photographs taken 1943. Field check 1949
Polyconic projection. 1927 North American datum
10,000-foot grid based on Oregon coordinate system,
north zone
No distinction is made between dwellings, barns,
commercial and industrial buildings
Unchecked elevations are shown in brown
Dashed land lines indicate approximate locations



CONTOUR INTERVAL 50 FEET
DASHED LINES REPRESENT HALF-INTERVAL CONTOURS
DATUM IS MEAN SEA LEVEL

USGS
Historical File
Topographic Division



ROAD CLASSIFICATION

Heavy-duty	4 LANE 16 LANE	Light-duty
Medium-duty	4 LANE 16 LANE	Unimproved dirt

U. S. Route State Route

GREEN MOUNTAIN, OREG.
N4600—W12337.5/7.5

1949

THIS MAP COMPLIES WITH NATIONAL MAP ACCURACY STANDARDS
FOR SALE BY U. S. GEOLOGICAL SURVEY, FEDERAL CENTER, DENVER, COLORADO OR WASHINGTON 25, D. C.
A FOLDER DESCRIBING TOPOGRAPHIC MAPS AND SYMBOLS IS AVAILABLE ON REQUEST

U.S.G.S.
FILE COPY
TOPOGRAPHIC DIVISION

HISTORICALLY

FEB 21 1955