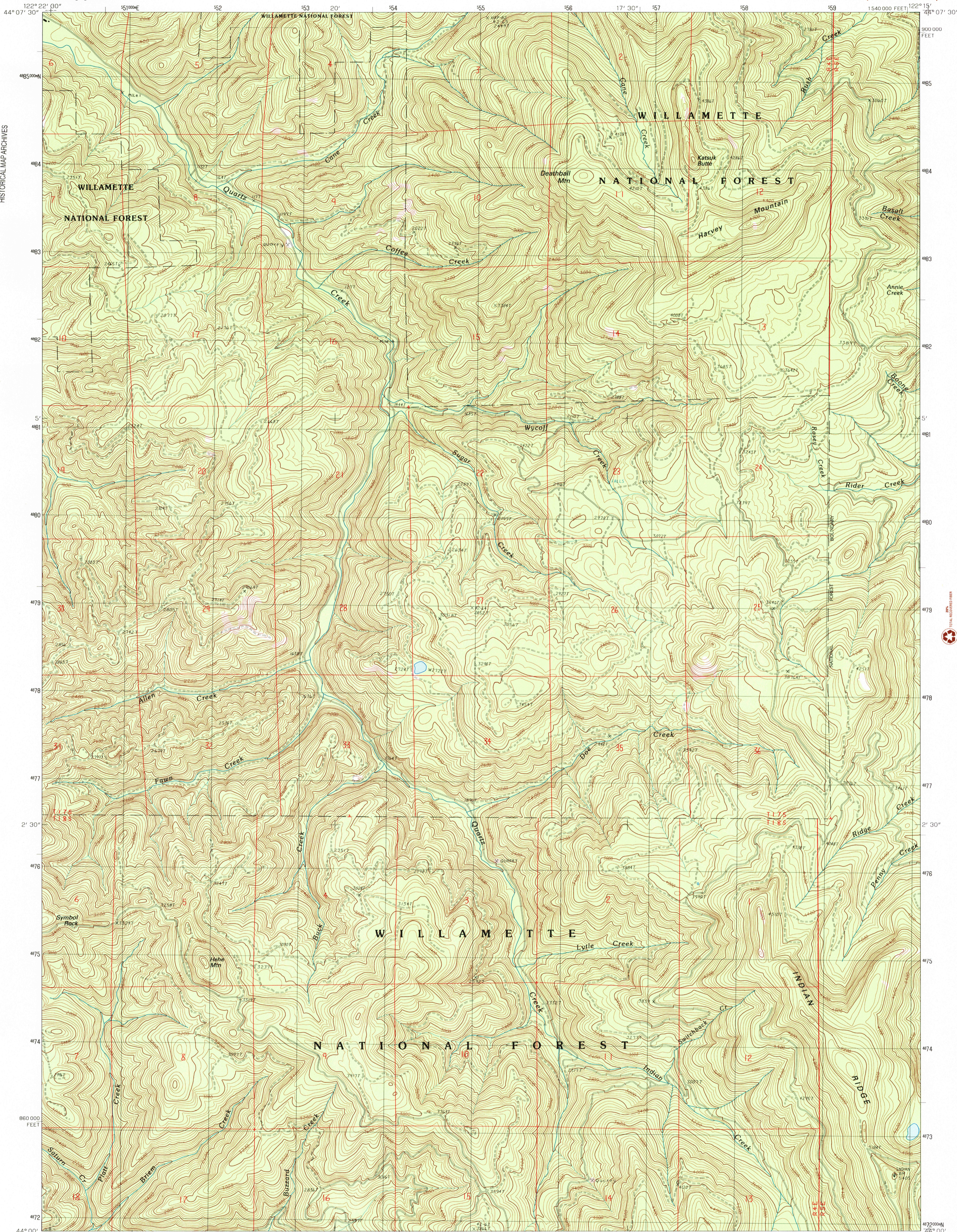


RECEIVED JUN 30 1999 USGS NMD HISTORICAL MAP ARCHIVES



PRODUCED BY THE UNITED STATES GEOLOGICAL SURVEY CONTROL BY... COMPILED FROM AERIAL PHOTOGRAPHS TAKEN... FIELD CHECKED... 1984. MAP EDITED... 1989... PROJECTION... LAMBERT CONFORMAL CONIC GRID... NATIONAL GEODETIC VERTICAL DATUM OF 1929... UTM GRID DECLINATION... 02°29' EAST 1989 MAGNETIC NORTH DECLINATION... 18°30' EAST VERTICAL DATUM... NATIONAL GEODETIC VERTICAL DATUM OF 1929 HORIZONTAL DATUM... 1927 NORTH AMERICAN DATUM To place on the predicted North American Datum of 1983, move the projection lines as shown by dashed corner ticks (22 meters north and 94 meters east) There may be private inholdings within the boundaries of any Federal or State reservations shown on this map No distinction made between houses, barns, and other buildings Where omitted, land lines have not been established

PROVISIONAL MAP Produced from original manuscript drawings. Information shown as of date of photography.

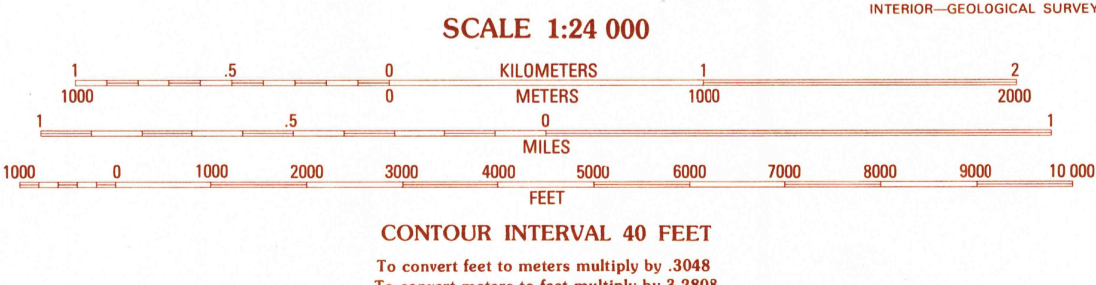


Table with 3 columns and 8 rows showing landmarks: 1 Mt. Hagan, 2 Blue River, 3 Mc Kenzie Bridge, 4 Nimrod, 5 Cougar Reservoir, 6 Sinker Mountain, 7 Sardine Butte, 8 Grasshopper Mtn.

ROAD LEGEND Improved Road, Unimproved Road, Trail, Interstate Route, U.S. Route, State Route. HARVEY MOUNTAIN, OREGON PROVISIONAL EDITION 1989 44122-A3-TF-024

THIS MAP COMPLIES WITH NATIONAL MAP ACCURACY STANDARDS FOR SALE BY U.S. GEOLOGICAL SURVEY, P.O. BOX 25286, DENVER, COLORADO 80225 A FOLDER DESCRIBING TOPOGRAPHIC MAPS AND SYMBOLS IS AVAILABLE ON REQUEST

