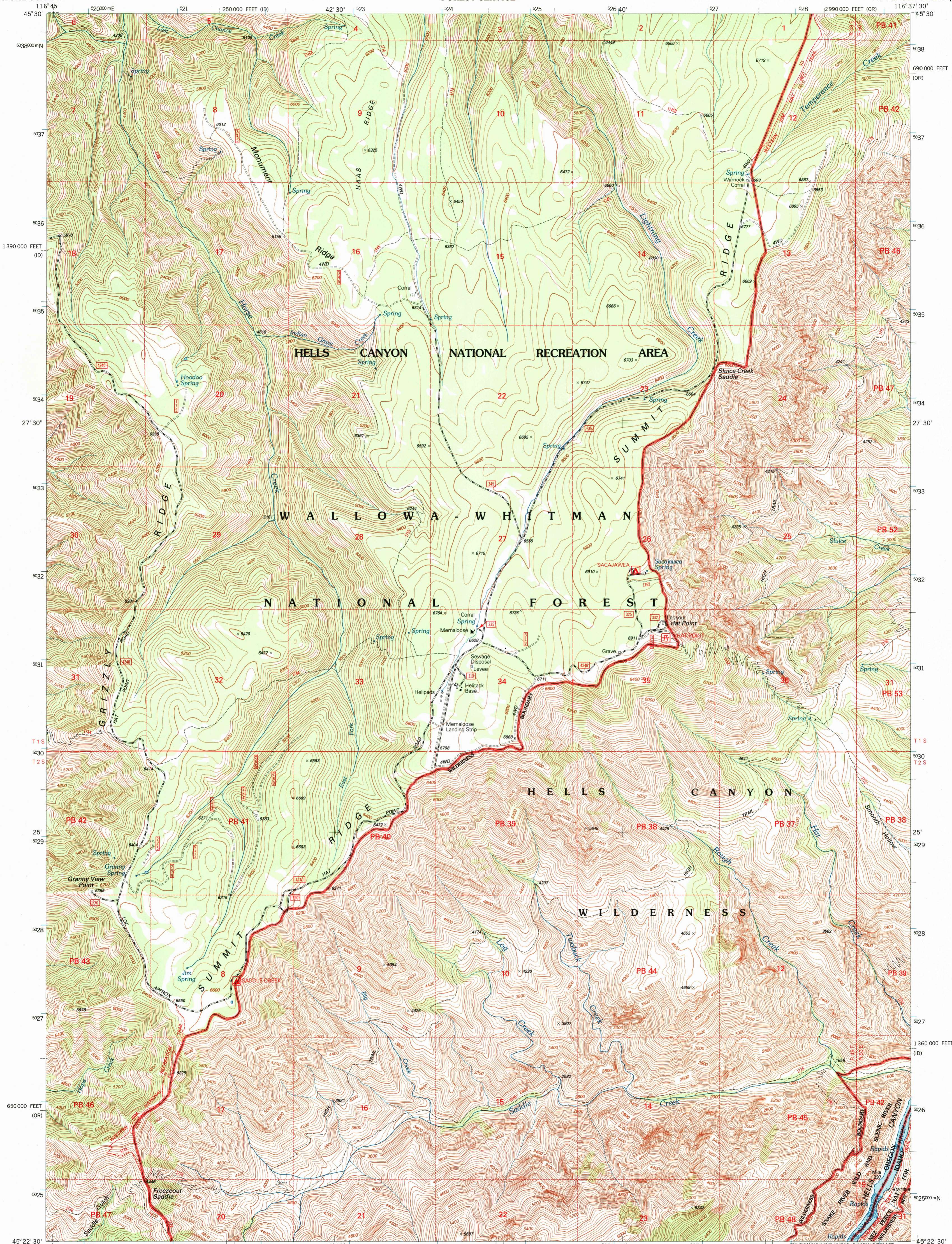
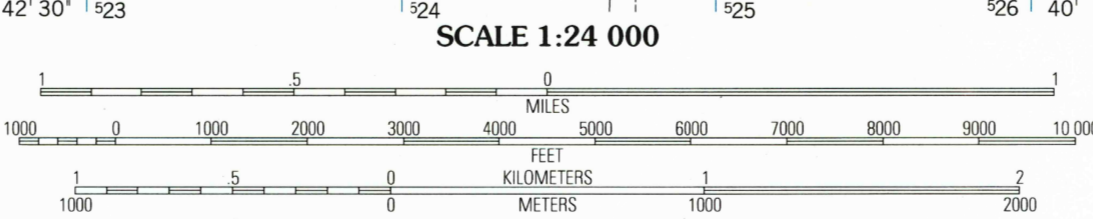
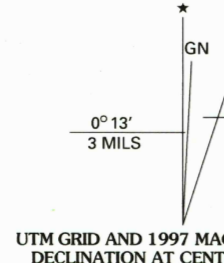


RECEIVED
AUG 31 1999
USGS NMD
HISTORICAL MAP ARCHIVES

RECEIVED
AUG 31 1999
USGS NMD
HISTORICAL MAP ARCHIVES



Produced by the U.S. Geological Survey
Revised by the U.S. Forest Service
Topography compiled 1981. Planimetry derived from imagery taken 1992
Public Land Survey System and survey control current as of 1995. Partial
field check by U.S. Forest Service 1995
North American Datum of 1927 (NAD 27). Projection and 10 000-foot ticks:
Oregon coordinate system, north zone (Lambert conformal conic)
Idaho coordinate system, west zone
Blue 1000-meter Universal Transverse Mercator ticks, zone 11
North American Datum of 1983 (NAD 83) is shown by dashed corner ticks
The values of the shift between NAD 27 and NAD 83 for 7.5-minute
intersections are obtainable from National Geodetic Survey NADCON software
Non-National Forest System lands within the National Forest
Inholdings may exist in other National or State reservations
This map is not a legal land line or ownership document. Public lands are
subject to change and leasing, and may have access restrictions; check
with local offices. Obtain permission before entering private lands
Protraction Blocks (PB) are unsurveyed land of uncertain acreage



SCALE 1:24 000

CONTOUR INTERVAL 40 FEET
NATIONAL GEODETIC VERTICAL DATUM OF 1929
TO CONVERT FEET TO METERS MULTIPLY BY 0.3048

THIS MAP COMPLIES WITH NATIONAL MAP ACCURACY STANDARDS
FOR SALE BY U.S. GEOLOGICAL SURVEY, P.O. BOX 25286, DENVER, COLORADO 80225
A FOLDER DESCRIBING TOPOGRAPHIC MAPS AND SYMBOLS IS AVAILABLE ON REQUEST



QUADRANGLE LOCATION

1	2	3	1 Imnaha
4	5	6	2 Sleepy Ridge
6	7	8	3 Temperance Creek
			4 Sheep Creek Divide
			5 Old Time Mountain
			6 Jaynes Ridge
			7 Squirrel Prairie
			8 He Devil

HIGHWAYS AND ROADS	
Interstate	1
U. S.	2
State	3
County	4
National Forest, suitable for passenger cars	5
National Forest, suitable for high clearance vehicles	6
National Forest Trail	384
Primary highway	1
Secondary highway	2
Light-duty road	3
Paved	4
Gravel	5
Dirt	6
Composition unspecified	7
Unimproved; 4 wheel drive	8
Trail	9
Gate	10

HAT POINT, OR-ID
1995
NIMA 2674 1 NW - SERIES V792

