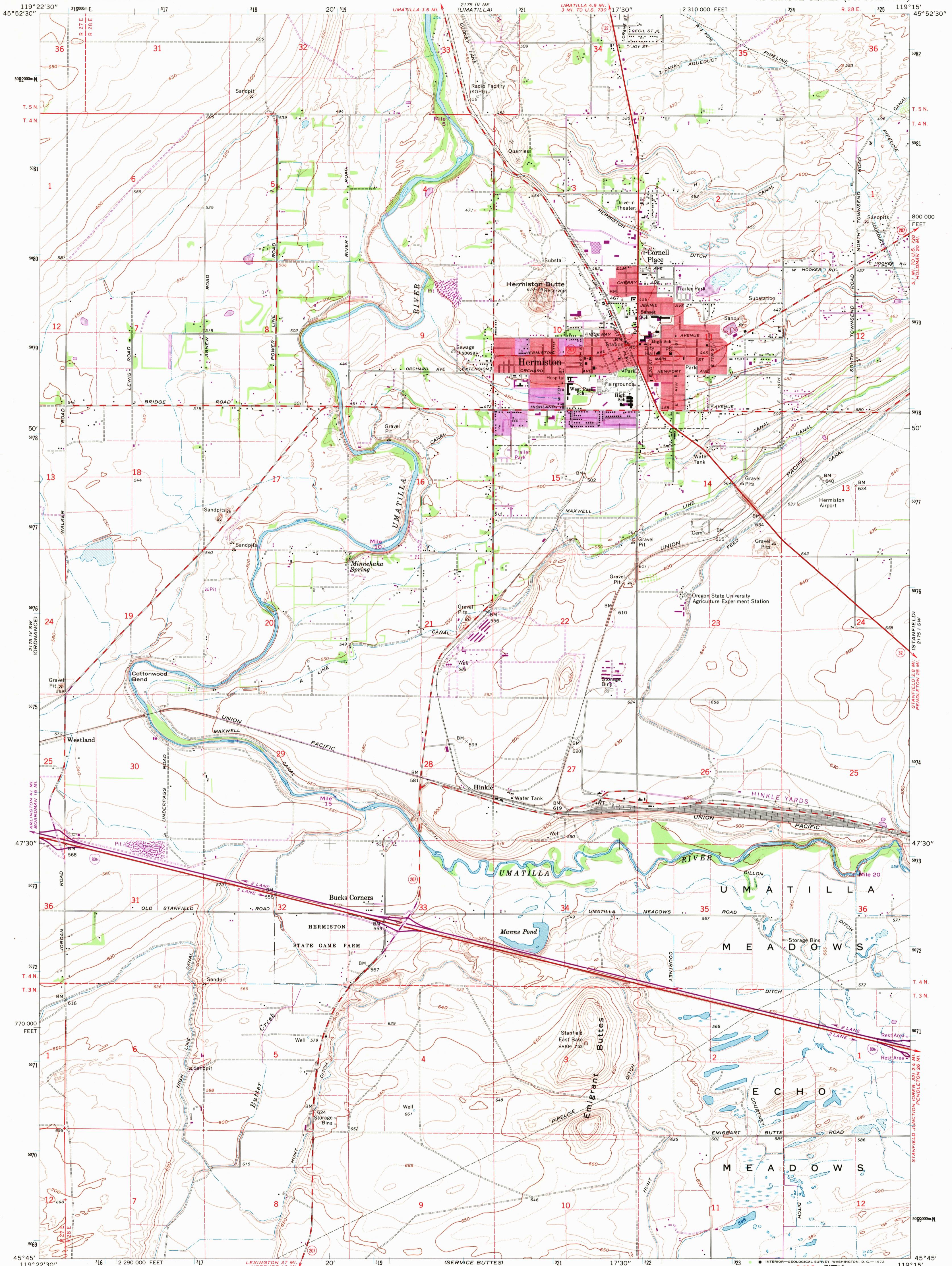


UNITED STATES  
DEPARTMENT OF THE INTERIOR  
GEOLOGICAL SURVEY

HERMISTON QUADRANGLE  
OREGON-UMATILLA CO.  
7.5 MINUTE SERIES (TOPOGRAPHIC)



Mapped, edited, and published by the Geological Survey  
Control by USGS and USC&GS

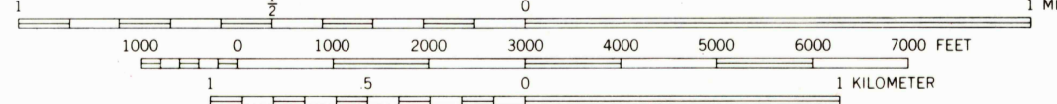
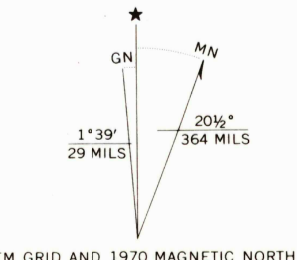
Topography by photogrammetric methods from aerial  
photographs taken 1958. Field checked 1962

Polyconic projection. 1927 North American datum  
10,000-foot grid based on Oregon coordinate system, north zone  
1000-meter Universal Transverse Mercator grid ticks,  
zone 11, shown in blue

Red tint indicates area in which only landmark buildings are shown  
Fine red dashed lines indicate selected fence lines

Revisions shown in purple compiled from aerial photographs  
taken 1970. This information not field checked

Purple tint indicates extension of urban areas



CONTOUR INTERVAL 10 FEET  
DOTTED LINES REPRESENT 5 FOOT CONTOURS  
DATUM IS MEAN SEA LEVEL



ROAD CLASSIFICATION

Heavy-duty	Light-duty
Medium-duty	Unimproved dirt
Interstate Route	U.S. Route
	State Route

HERMISTON, OREG.  
N4545-W11915/7.5

1962  
PHOTOREVISED 1970  
AMS 2175 IV SE-SERIES V892

MAR 1 1972

2/35

USGS  
HISTORICAL FILE  
TOPOGRAPHIC DIVISION