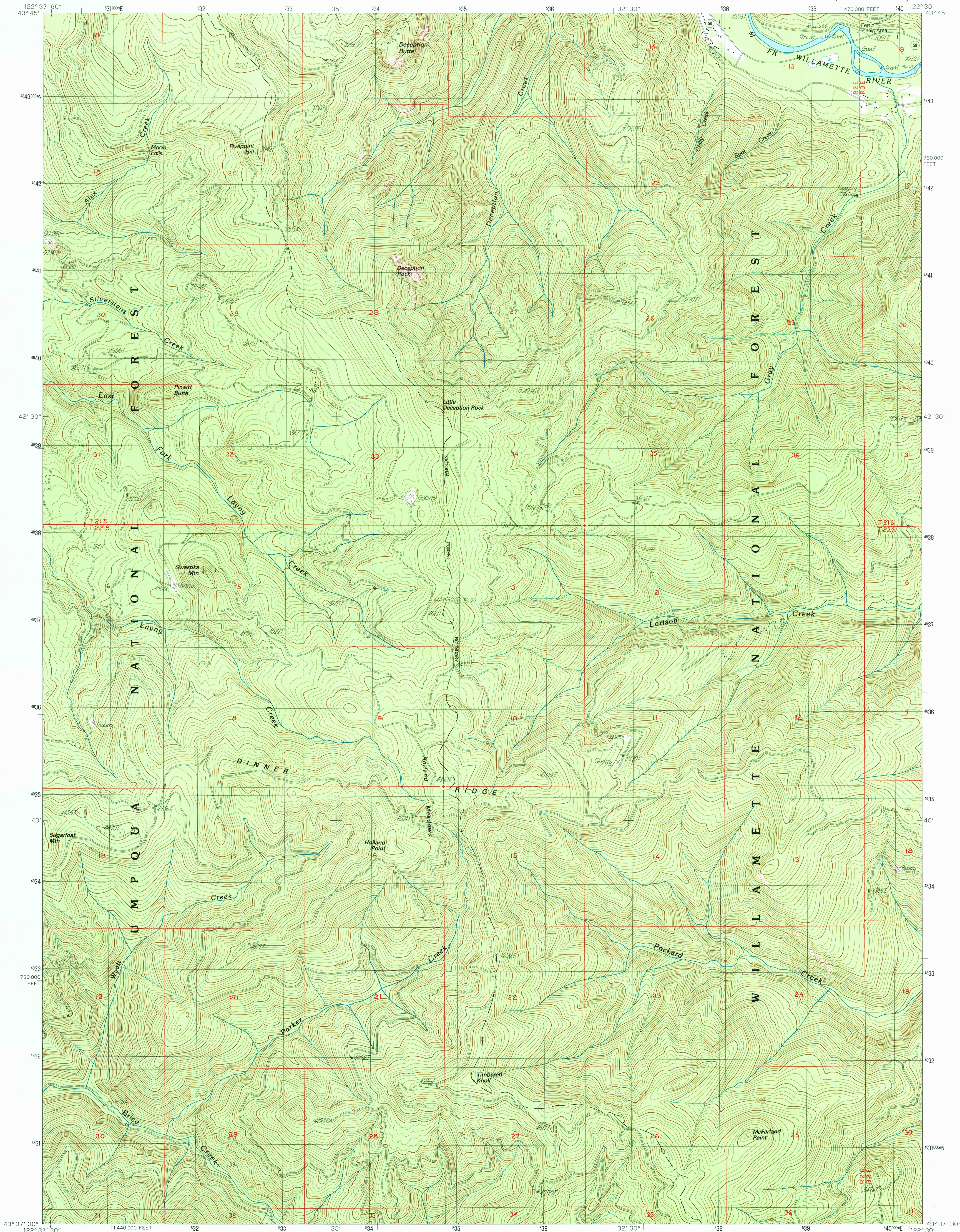


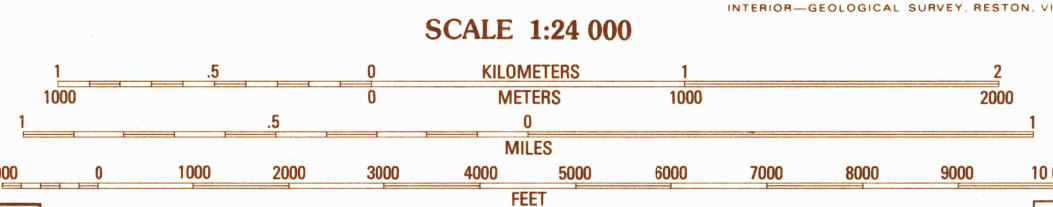
UNITED STATES
DEPARTMENT OF THE INTERIOR
GEOLOGICAL SURVEY

HOLLAND POINT QUADRANGLE
OREGON—LANE CO.
7.5 MINUTE SERIES (TOPOGRAPHIC)



PRODUCED BY THE UNITED STATES GEOLOGICAL SURVEY
CONTROL BY USGS, NOS/NOAA
COMPILED FROM AERIAL PHOTOGRAPHS TAKEN 1980-82
FIELD CHECKED 1984, MAP EDITED 1986
PROJECTION LAMBERT CONFORMAL CONIC
GRID: 1000-METER TRANSVERSE MERCATOR ZONE 10
10,000-FOOT STATE GRID TICS OREGON SOUTH ZONE
UTM GRID DECLINATION 0°18' EAST
1980 MAGNETIC NORTH DECLINATION 19° EAST
VERTICAL DATUM NATIONAL GEODETIC VERTICAL DATUM OF 1929
HORIZONTAL DATUM 1927 NORTH AMERICAN DATUM
To place on the predicted North American Datum of 1983,
move the projection lines as shown by dashed corner ticks
(21 meters north / 94 meters east)
There may be private inholdings within the boundaries of any
Federal and State Reservations shown on this map
No distinction made between houses, barns, and other buildings

PROVISIONAL MAP
Produced from original
manuscript drawings. Infor-
mation shown as of date of
photography.



CONTOUR INTERVAL 40 FEET

To convert meters to feet multiply by 3.2808
To convert feet to meters multiply by 0.3048



QUADRANGLE LOCATION

1	2	3
4	5	6
7	8	9

1 Mount June
2 Westfir West
3 Westfir East
4 Rose Hill
5 Oakridge
6 Fairview Peak
7 Bearbones Mtn.
8 Warner Mtn.

ADJOINING 7.5' QUADRANGLE NAMES

ROAD LEGEND
Improved Road.....
Unimproved Road.....
Trail.....
Interstate Route U.S. Route State Route

HOLLAND POINT, OREG.
PROVISIONAL EDITION 1986

43122-F5-TF-024

FOR SALE BY U. S. GEOLOGICAL SURVEY, DENVER, COLORADO 80225, OR RESTON, VIRGINIA 22092

