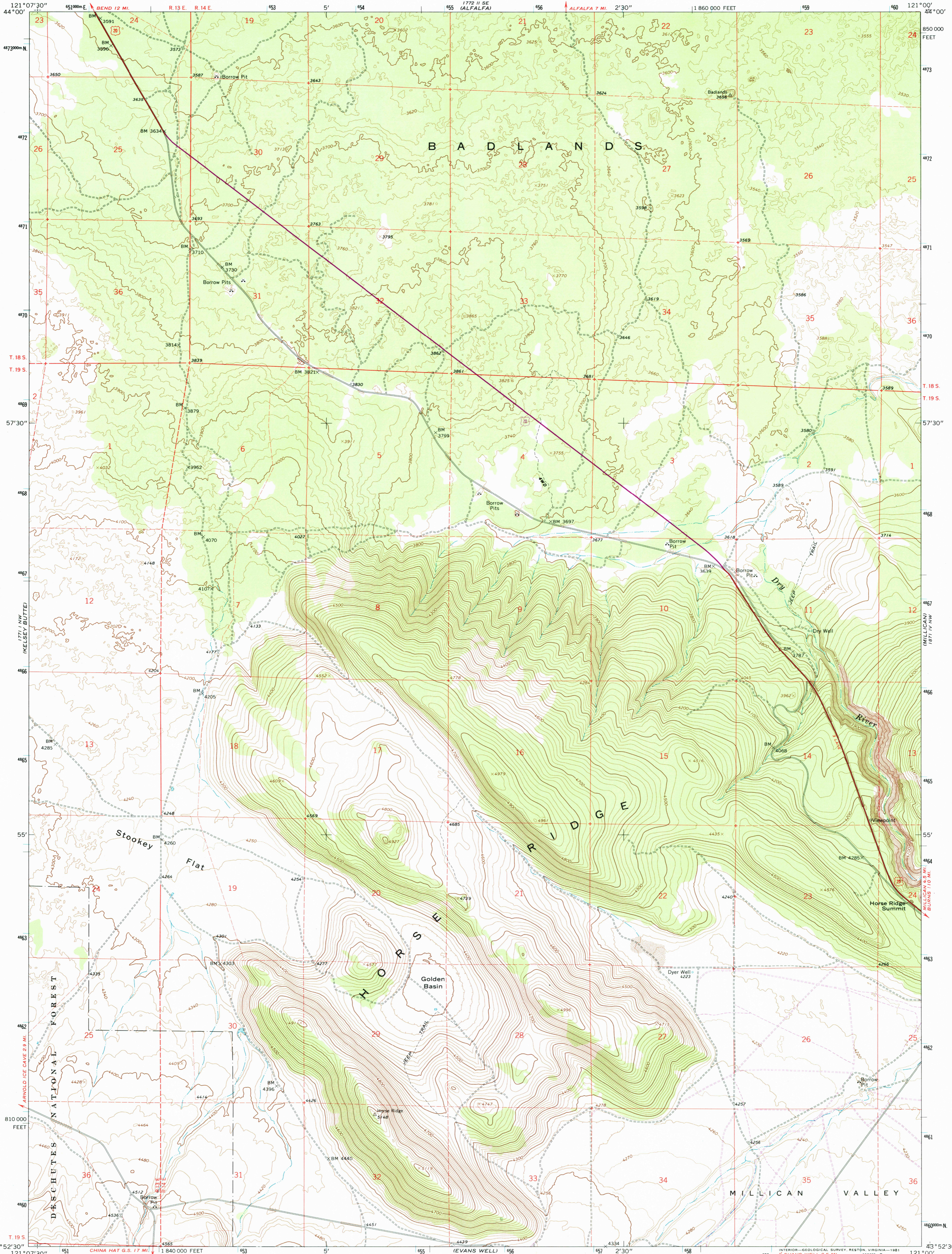




U.S. DEPARTMENT OF THE INTERIOR
U.S. GEOLOGICAL SURVEY

HORSE RIDGE QUADRANGLE
OREGON—DESCHUTES CO.
7.5 MINUTE SERIES (TOPOGRAPHIC)



Mapped, edited, and published by the Geological Survey

Control by USGS, NOS/NOAA

Topography by photogrammetric methods from aerial photographs taken 1963. Field checked 1967

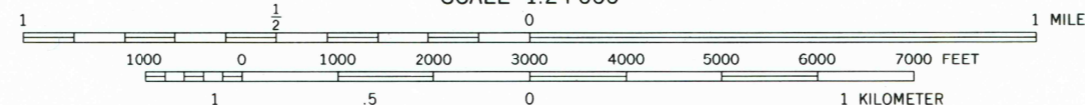
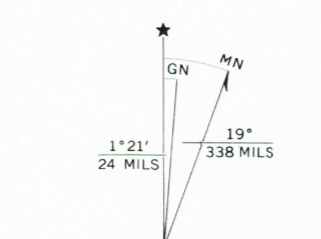
Polyconic projection. 1927 North American datum, 10,000-foot grid based on Oregon coordinate system, south zone

1000-meter Universal Transverse Mercator grid ticks, zone 10, shown in blue

To place on the predicted North American Datum 1983 move the projection lines 20 meters north and 91 meters east as shown by dashed corner ticks

There may be private inholdings within the boundaries of the National or State reservations shown on this map

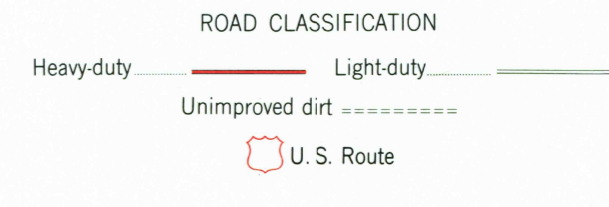
Fine red dashed lines indicate selected fence lines



SCALE 1:24 000
CONTOUR INTERVAL 20 FEET
DOTTED LINES REPRESENT 10-FOOT CONTOURS
NATIONAL GEODETIC VERTICAL DATUM OF 1929



QUADRANGLE LOCATION



HORSE RIDGE, OREG.
N4352.5—W12100/7.5

1967
PHOTOREVISED 1981
DMA 1771 I NE—SERIES V892

THIS MAP COMPLIES WITH NATIONAL MAP ACCURACY STANDARDS
FOR SALE BY U.S. GEOLOGICAL SURVEY, P.O. BOX 25286, DENVER, COLORADO 80225
A FOLDER DESCRIBING TOPOGRAPHIC MAPS AND SYMBOLS IS AVAILABLE ON REQUEST

Revisions shown in purple compiled from aerial photographs taken 1979 and other source data. This information not field checked. Map edited 1981

RECEIVED
JUL 1 2002

U.S. GEOLOGICAL SURVEY
TOPOGRAPHIC MAP ARCHIVES

ISBN 0-607-44460-6
9 780607 444605