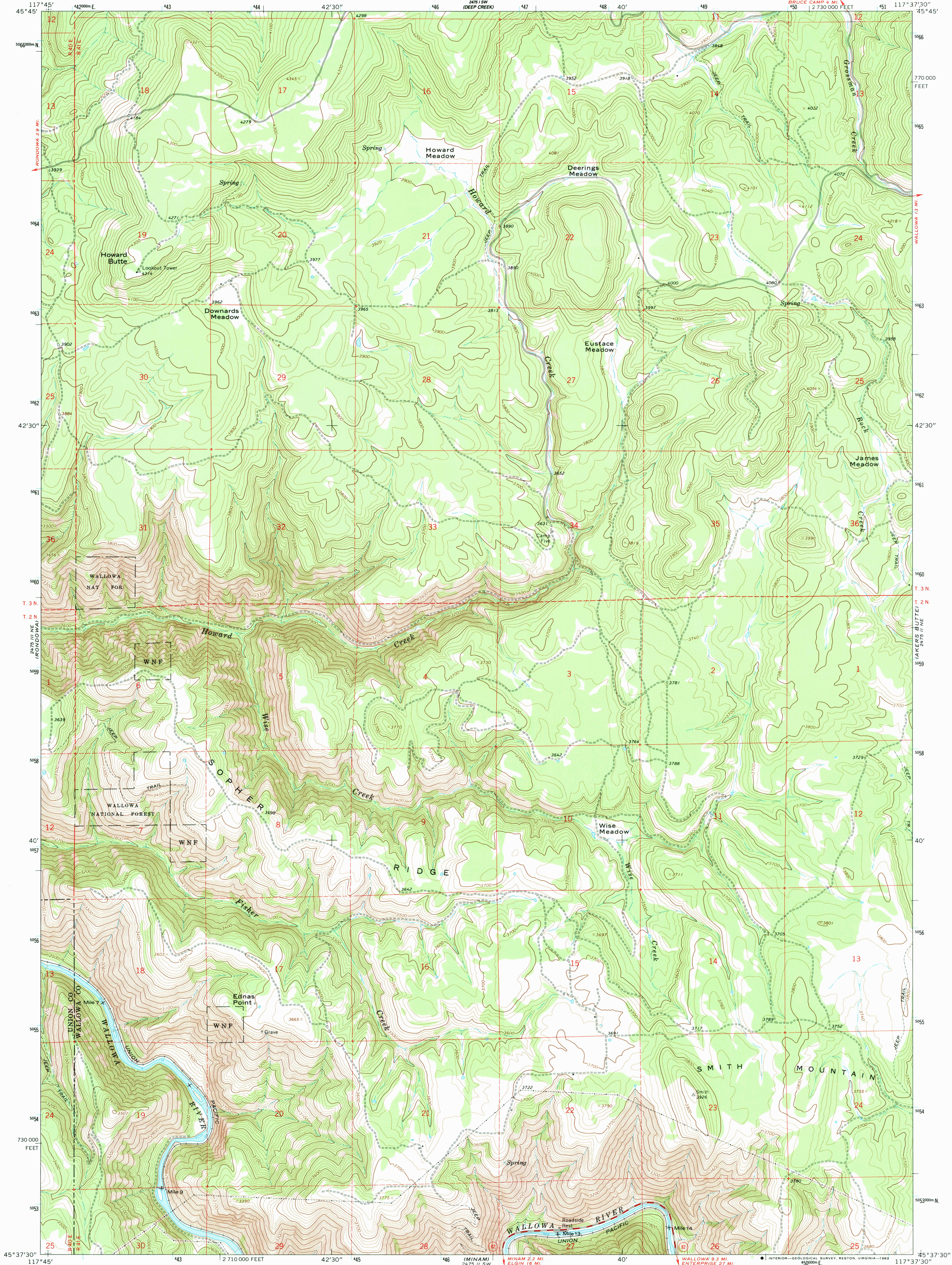
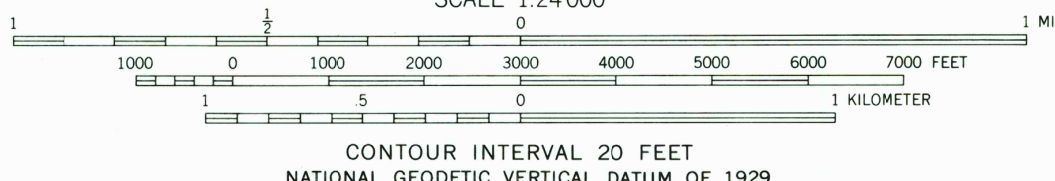
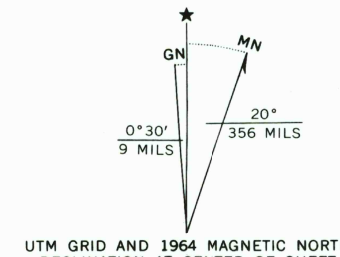


UNITED STATES
DEPARTMENT OF THE INTERIOR
GEOLOGICAL SURVEY

HOWARD BUTTE QUADRANGLE
OREGON
7.5 MINUTE SERIES (TOPOGRAPHIC)



Mapped, edited, and published by the Geological Survey
Control by USGS and USC&GS
Topography by photogrammetric methods from aerial
photographs taken 1959. Field checked 1964
Polyconic projection. 1927 North American datum
10,000-foot grid based on Oregon coordinate system,
north zone
1000-meter Universal Transverse Mercator grid ticks,
zone 11, shown in blue
To place on the predicted North American Datum 1983
move the projection lines 17 meters north and
80 meters east as shown by dashed corner ticks
There may be private inholdings within the boundaries of
the National or State reservations shown on this map



ROAD CLASSIFICATION
Medium-duty ——— Light-duty ———
Unimproved dirt ———
State Route ———

HOWARD BUTTE, OREG.
N4537.5—W11737.5/7.5

1964

DMA 2475 II NW—SERIES V892

THIS MAP COMPLIES WITH NATIONAL MAP ACCURACY STANDARDS
FOR SALE BY U. S. GEOLOGICAL SURVEY, DENVER, COLORADO 80225, OR RESTON, VIRGINIA 22092
A FOLDER DESCRIBING TOPOGRAPHIC MAPS AND SYMBOLS IS AVAILABLE ON REQUEST

RETURN TO:
USGS AND HISTORICAL MAP ARCHIVES