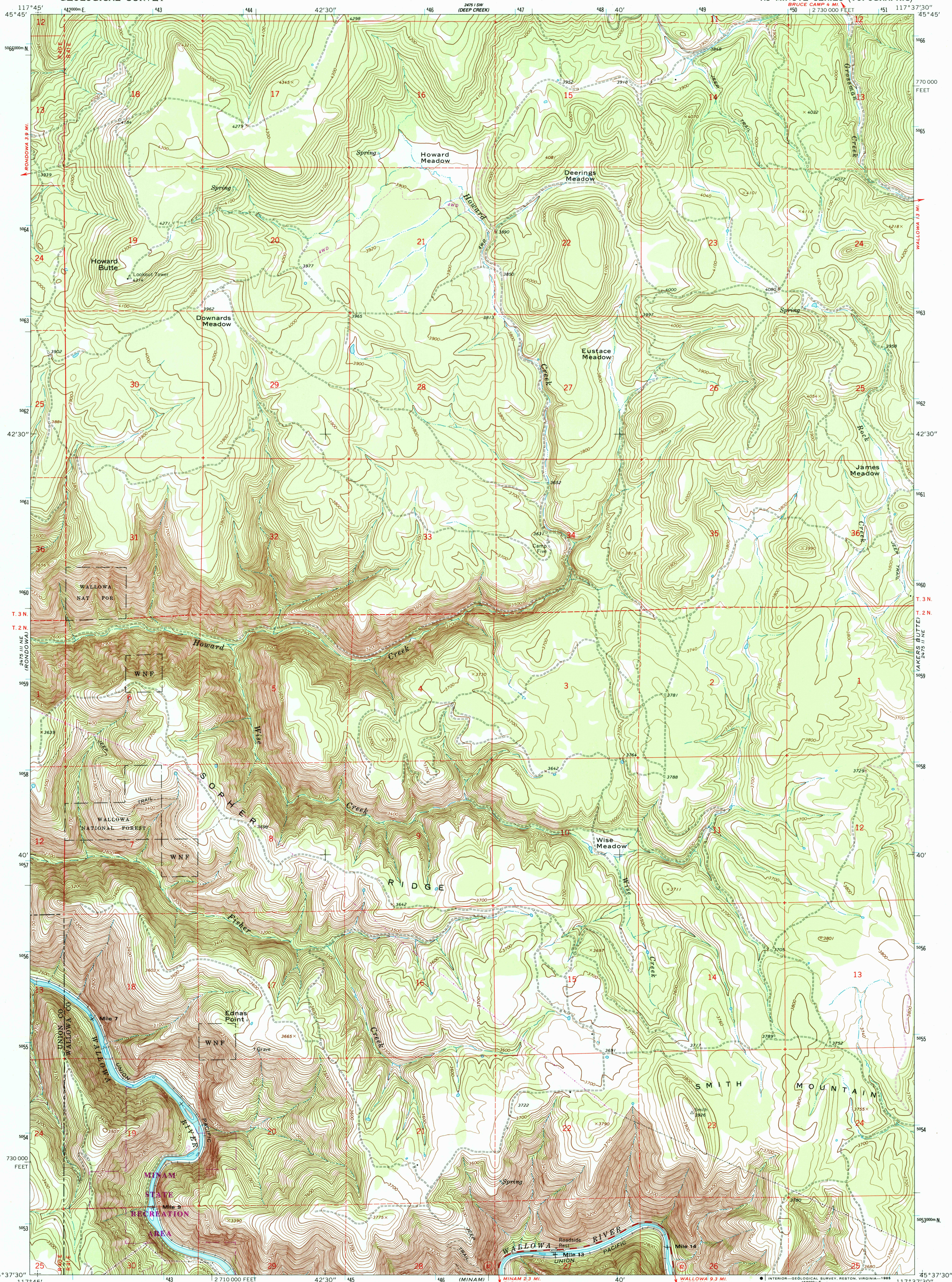


UNITED STATES  
DEPARTMENT OF THE INTERIOR  
GEOLOGICAL SURVEY

HOWARD BUTTE QUADRANGLE  
OREGON  
7.5 MINUTE SERIES (TOPOGRAPHIC)



Mapped, edited, and published by the Geological Survey

Control by USGS and NOS/NOAA

Topography by photogrammetric methods from aerial photographs taken 1959. Field checked 1964

Polyconic projection. 1927 North American datum

10,000-foot grid based on Oregon coordinate system, north zone

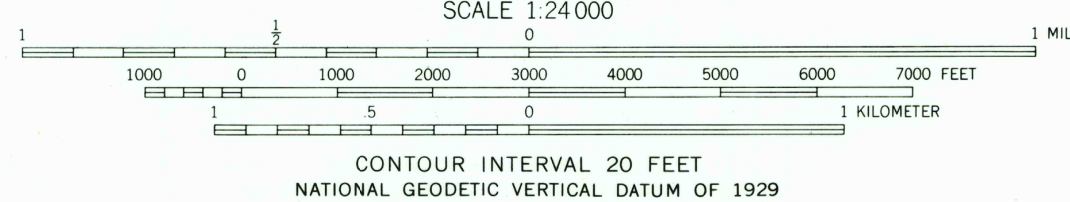
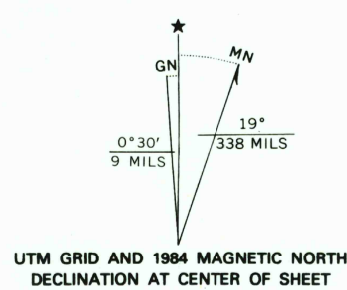
1000-meter Universal Transverse Mercator grid ticks, zone 11, shown in blue

To place on the predicted North American Datum 1983

move the projection lines 17 meters north and

80 meters east as shown by dashed corner ticks

There may be private inholdings within the boundaries of the National or State reservations shown on this map



ROAD CLASSIFICATION  
Medium-duty  
Light-duty  
Unimproved dirt  
State Route

HOWARD BUTTE, OREG.

45117-F6-TF-024

1964  
PHOTOREVISED 1984  
DMA 2475 II NW—SERIES V892

THIS MAP COMPLIES WITH NATIONAL MAP ACCURACY STANDARDS  
FOR SALE BY U. S. GEOLOGICAL SURVEY, DENVER, COLORADO 80225, OR RESTON, VIRGINIA 22092  
A FOLDER DESCRIBING TOPOGRAPHIC MAPS AND SYMBOLS IS AVAILABLE ON REQUEST

Revision shown in purple and woodland compiled from  
aerial photographs taken 1981 and other sources  
Partial field check by U.S. Forest Service. Map edited 1984