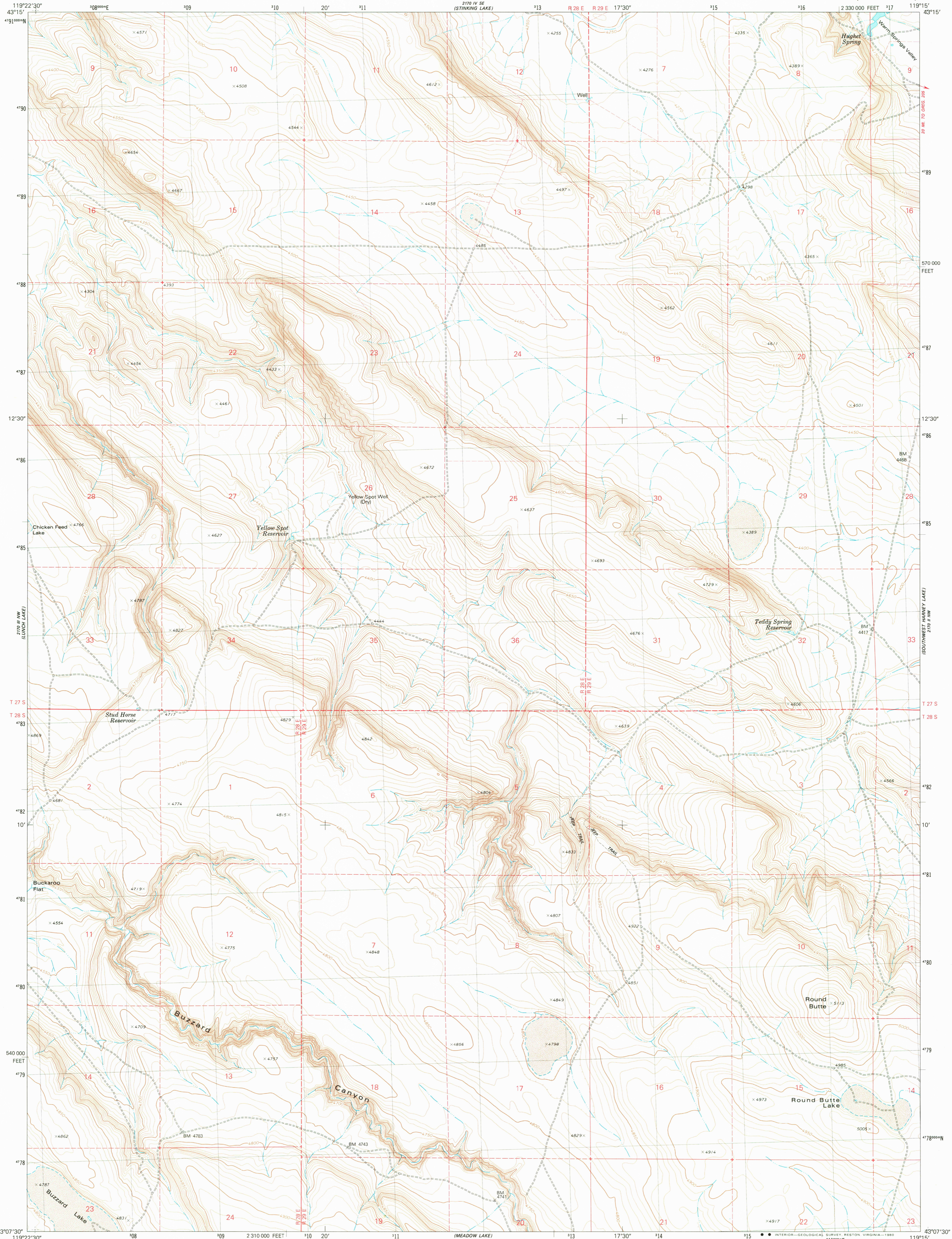


UNITED STATES  
DEPARTMENT OF THE INTERIOR  
GEOLOGICAL SURVEY

HUGHET SPRING QUADRANGLE  
OREGON-HARNEY CO.  
7.5 MINUTE SERIES (TOPOGRAPHIC)



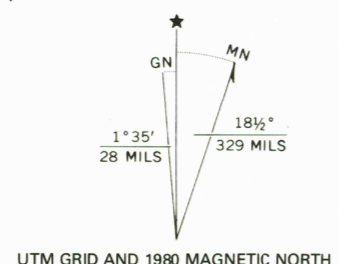
Mapped, edited, and published by the Geological Survey

Control by USGS and NOS/NOAA

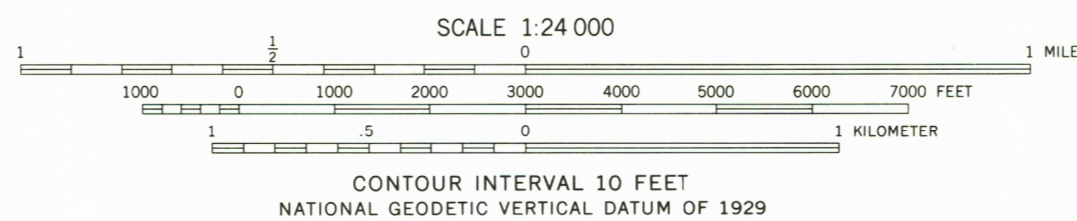
Topography by photogrammetric methods from aerial photographs taken 1972. Field checked 1974. Map edited 1980.

Projection and 10,000-foot grid ticks: Oregon coordinate system, south zone (Lambert conformal conic) 1000-meter Universal Transverse Mercator grid, zone 11 1927 North American Datum. To place on the predicted North American Datum 1983 move the projection lines 18 meters north and 85 meters east as shown by dashed corner ticks.

Fine red dashed lines indicate selected fence and field lines where generally visible on aerial photographs. This information is unchecked.



UTM GRID AND 1980 MAGNETIC NORTH DECLINATION AT CENTER OF SHEET



QUADRANGLE LOCATION

ROAD CLASSIFICATION	
Primary highway, hard surface	Light-duty road, hard or improved surface
Secondary highway, hard surface	Unimproved road
Interstate Route	U. S. Route
	State Route

USGS  
Historical File  
Topographic Division

HUGHET SPRING, OREG.  
N4307.5-W11915/7.5

1980

DMA 2170 III NE—SERIES V892

AUG 19 1980

1650