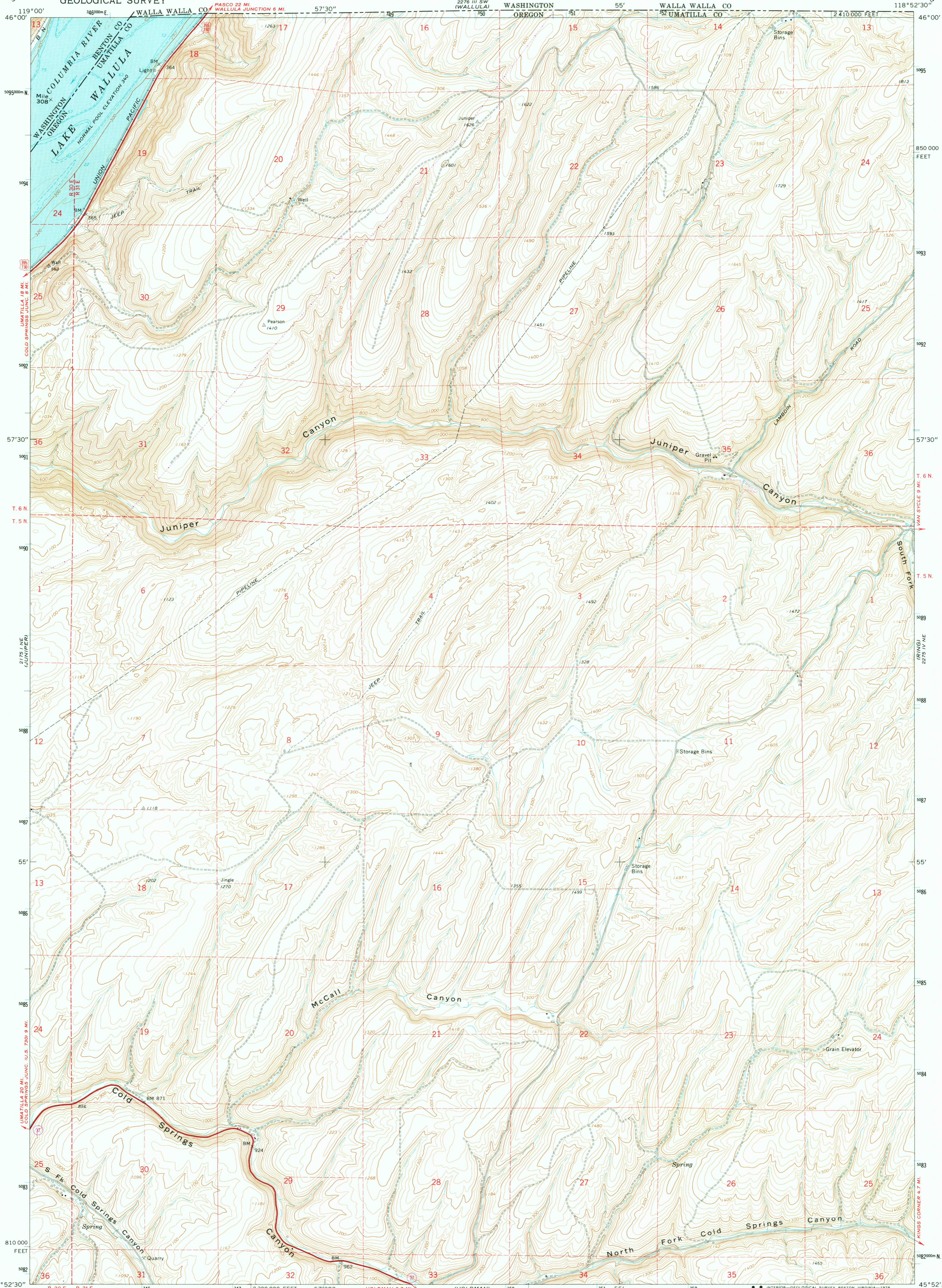


UNITED STATES
DEPARTMENT OF THE INTERIOR
GEOLOGICAL SURVEY

JUNIPER CANYON QUADRANGLE
OREGON-WASHINGTON
7.5 MINUTE SERIES (TOPOGRAPHIC)



Mapped, edited, and published by the Geological Survey
Control by USGS, NOS/NOAA, and USCE

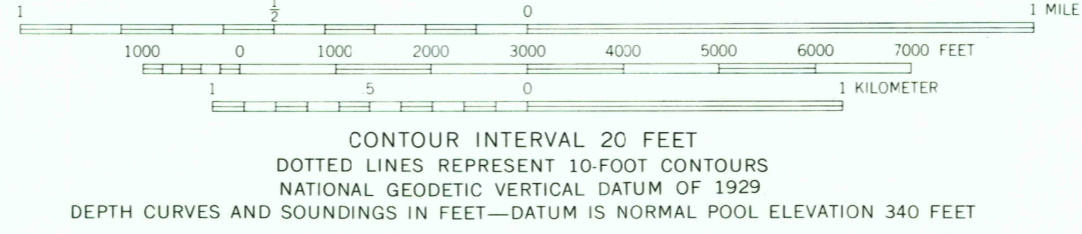
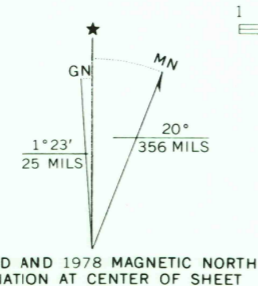
Topography by photogrammetric methods from
aerial photographs taken 1964. Field checked 1966
Underwater contours by USCE

Selected hydrographic data compiled from NOS/NOAA Chart 6164 (1960)
This information is not intended for navigational purposes

Polynomic projection. 1927 North American datum
10,000-foot grid based on Oregon coordinate system, north zone
1000 meter Universal Transverse Mercator grid ticks,
zone 11, shown in blue

Fine red dashed lines indicate selected fence lines

Revisions shown in purple compiled from aerial photographs taken 1976
This information not field checked. Map edited 1978



ROAD CLASSIFICATION
Heavy-duty ——— Light-duty ———
Unimproved dirt - - - - - U.S. Route

USGS
Historical File
Topographic Division

JUNIPER CANYON, OREG.—WASH.
N4552.5—W11852.5/7.5

1966
PHOTOREVISED 1978
AMS 2275 IV NW—SERIES V892

AUG 22 1978

THIS MAP COMPLIES WITH NATIONAL MAP ACCURACY STANDARDS
FOR SALE BY U.S. GEOLOGICAL SURVEY, DENVER, COLORADO 80225, OR RESTON, VIRGINIA 22092
A FOLDER DESCRIBING TOPOGRAPHIC MAPS AND SYMBOLS IS AVAILABLE ON REQUEST