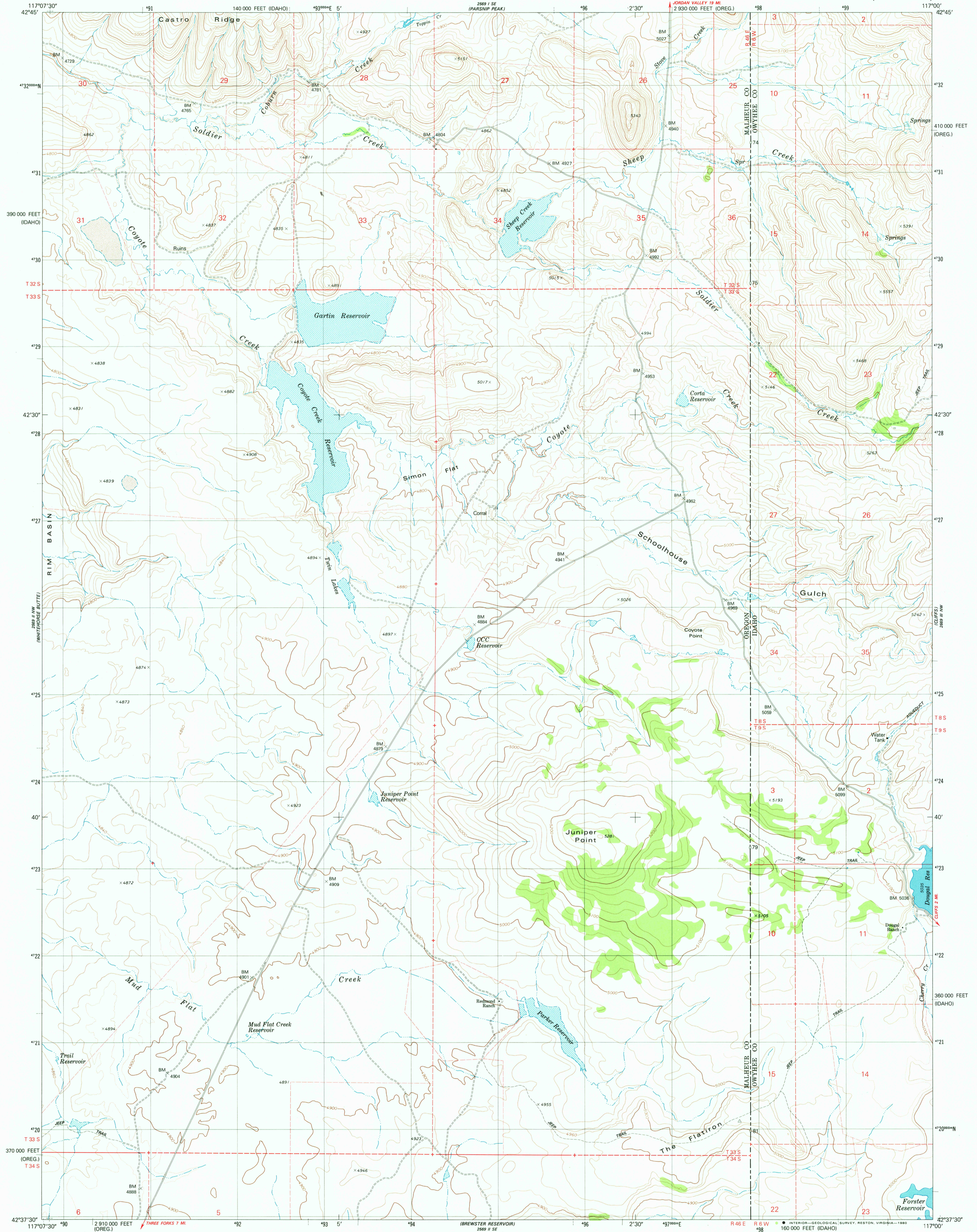


UNITED STATES  
DEPARTMENT OF THE INTERIOR  
GEOLOGICAL SURVEY

JUNIPER POINT QUADRANGLE  
OREGON-IDAHO  
7.5 MINUTE SERIES (TOPOGRAPHIC)



Mapped, edited, and published by the Geological Survey

Control by USGS and NOS/NOAA

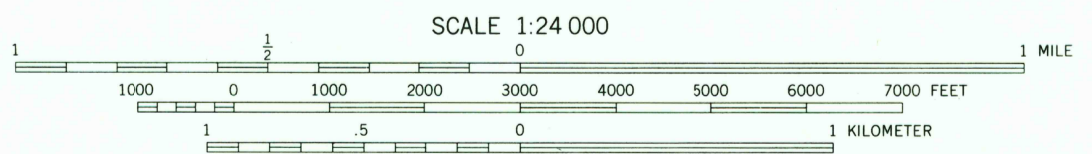
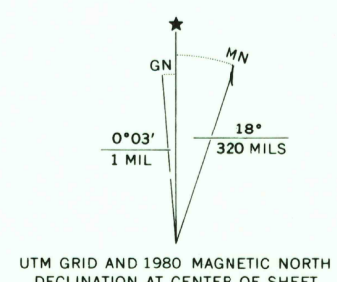
Topography by photogrammetric methods from aerial photographs taken 1973. Field checked 1975. Map edited 1980

Projection: Oregon coordinate system, south zone (Lambert conformal conic)

10,000-foot grid ticks based on Oregon coordinate system, south zone and Idaho coordinate system, west zone 1000-meter Universal Transverse Mercator grid, zone 11 1927 North American Datum

To place on the predicted North American Datum 1983 move the projection lines 15 meters north and 79 meters east as shown by dashed corner ticks

Fine red lines indicate selected fence and field lines where generally visible on aerial photographs. This information is unchecked. Certain land lines are omitted because of insufficient data



CONTOUR INTERVAL 20 FEET  
DOTTED LINES REPRESENT 10-FOOT CONTOURS  
NATIONAL GEODETIC VERTICAL DATUM OF 1929



ROAD CLASSIFICATION

Primary highway, hard surface	Light-duty road, hard or improved surface
Secondary highway, hard surface	Unimproved road
Interstate Route	U. S. Route
	State Route

THIS MAP COMPLIES WITH NATIONAL MAP ACCURACY STANDARDS  
FOR SALE BY U. S. GEOLOGICAL SURVEY, DENVER, COLORADO 80225, OR RESTON, VIRGINIA 22092  
A FOLDER DESCRIBING TOPOGRAPHIC MAPS AND SYMBOLS IS AVAILABLE ON REQUEST

JUNIPER POINT, OREG.-IDAHO  
N4237.5-W11700/7.5

1980  
DMA 2569 II NE--SERIES V892

JUN - 5 1980  
2200