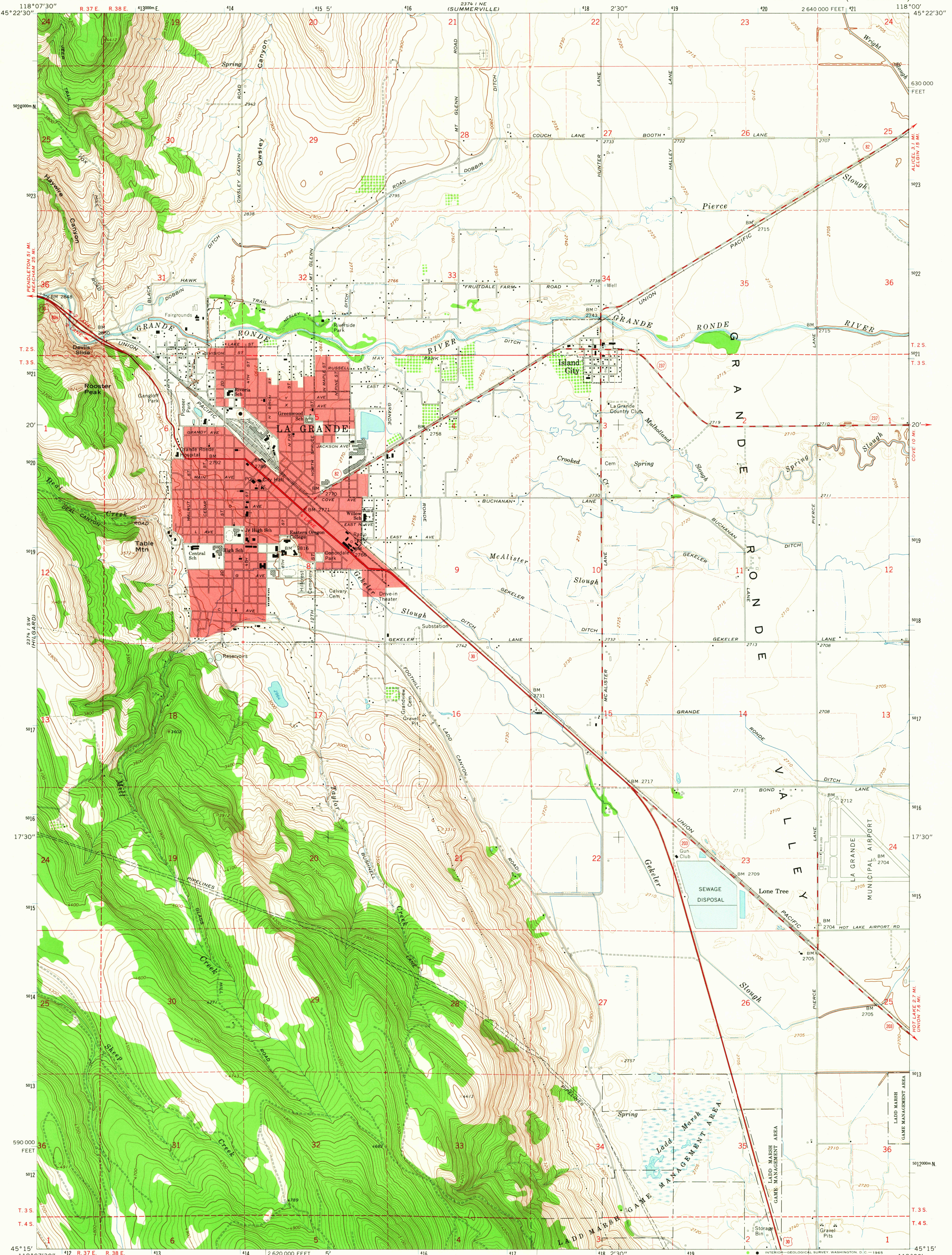


UNITED STATES  
DEPARTMENT OF THE INTERIOR  
GEOLOGICAL SURVEY

LA GRANDE SE QUADRANGLE  
OREGON—UNION CO.  
7.5 MINUTE SERIES (TOPOGRAPHIC)



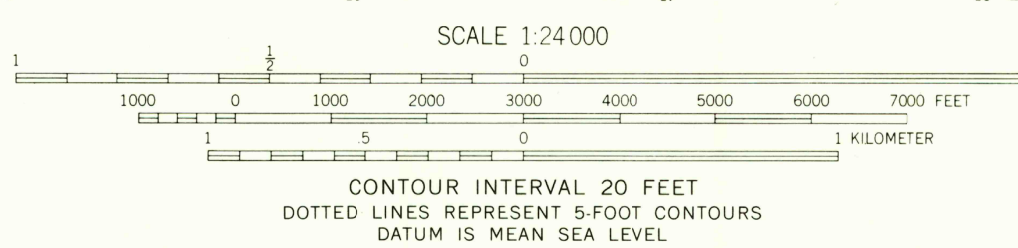
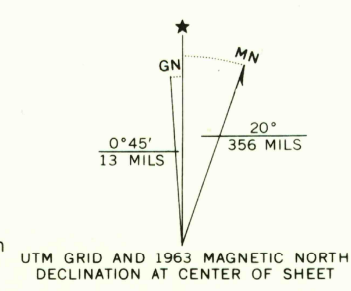
Mapped, edited, and published by the Geological Survey

Control by USGS and USC&GS

Topography by photogrammetric methods from aerial photographs taken 1957 and planetable surveys 1963

Polyconic projection. 1927 North American datum  
10,000-foot grid based on Oregon coordinate system, north zone  
1000-meter Universal Transverse Mercator grid ticks, zone 11, shown in blue

Red tint indicates area in which only landmark buildings are shown  
Fine red dashed lines indicate selected fence lines



USGS  
Historical File  
Topographic Division



ROAD CLASSIFICATION  
Heavy-duty ——— Light-duty ———  
Medium-duty ——— Unimproved dirt ———  
Interstate Route U.S. Route State Route

LA GRANDE SE, OREG.  
N4515—W11800/7.5

1963

AMS 2374 I SE—SERIES V892

JUL 9 1965

2745

U.S.G.S.  
FILE COPY  
TOPOGRAPHIC DIVISION