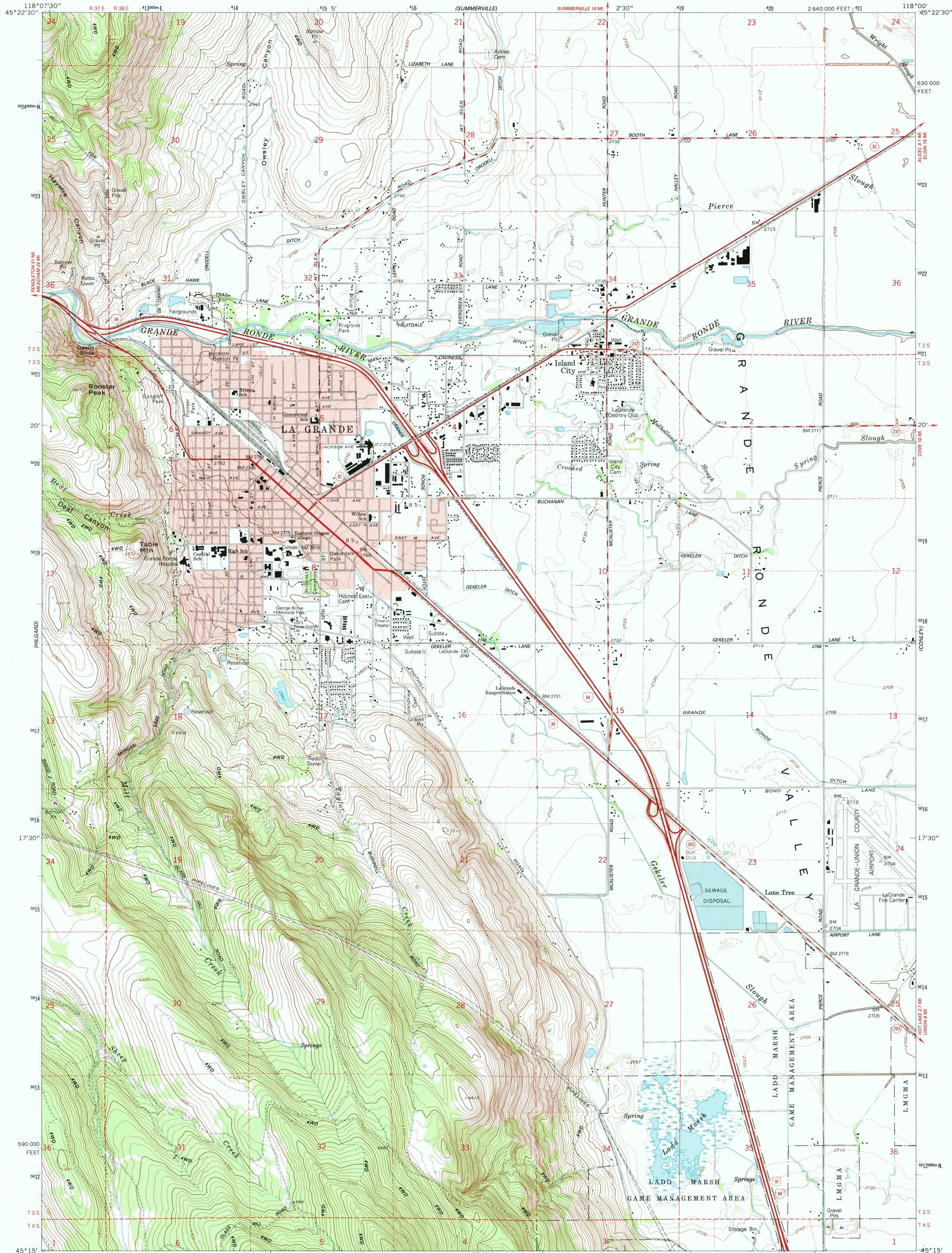


UNITED STATES  
DEPARTMENT OF THE INTERIOR  
GEOLOGICAL SURVEY

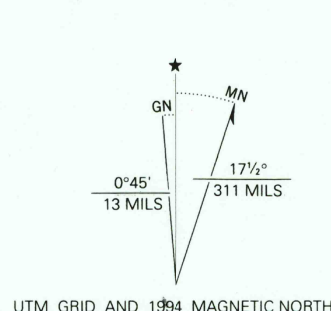
LA GRANDE QUADRANGLE  
OREGON-UNION CO.  
7.5-MINUTE SERIES (TOPOGRAPHIC)



Produced by the United States Geological Survey  
Control by USGS, NOS/NOAA and USBR  
Compiled from aerial photographs taken 1957. Revised from aerial  
photographs taken 1988 and other sources. Field checked 1992  
Map edited 1994

North American Datum of 1927 (NAD 27). Projection and  
1000-foot ticks: Oregon Coordinate System, north zone  
(Lambert Conformal Conic)  
Blue 1000-meter Universal Transverse Mercator ticks, zone 11  
North American Datum of 1983 (NAD 83) is shown by dashed  
corner ticks. The values of the shift between NAD 27 and NAD 83  
for 7.5-minute intersections are obtainable from National Geodetic  
Survey NADCON software

There may be private inholdings within the boundaries of the  
National or State reservations shown on this map  
Red tint indicates areas in which only landmark buildings are shown



SCALE 1:24 000

CONTOUR INTERVAL 20 FEET  
SUPPLEMENTARY CONTOUR INTERVAL 5 FEET  
NATIONAL GEODETIC VERTICAL DATUM OF 1929

THIS MAP COMPLIES WITH NATIONAL MAP ACCURACY STANDARDS  
FOR SALE BY U.S. GEOLOGICAL SURVEY  
DENVER, COLORADO 80225, OR RESTON, VIRGINIA 22092  
A FOLDER DESCRIBING TOPOGRAPHIC MAPS AND SYMBOLS IS AVAILABLE ON REQUEST

ROAD CLASSIFICATION  
Heavy-duty ——— Light-duty ———  
Medium-duty ——— Unimproved dirt ———  
Interstate Route U.S. Route State Route



LA GRANDE, OR  
45118 C1 TF-024

1994

DMA 2374 I SE-SERIES V892

