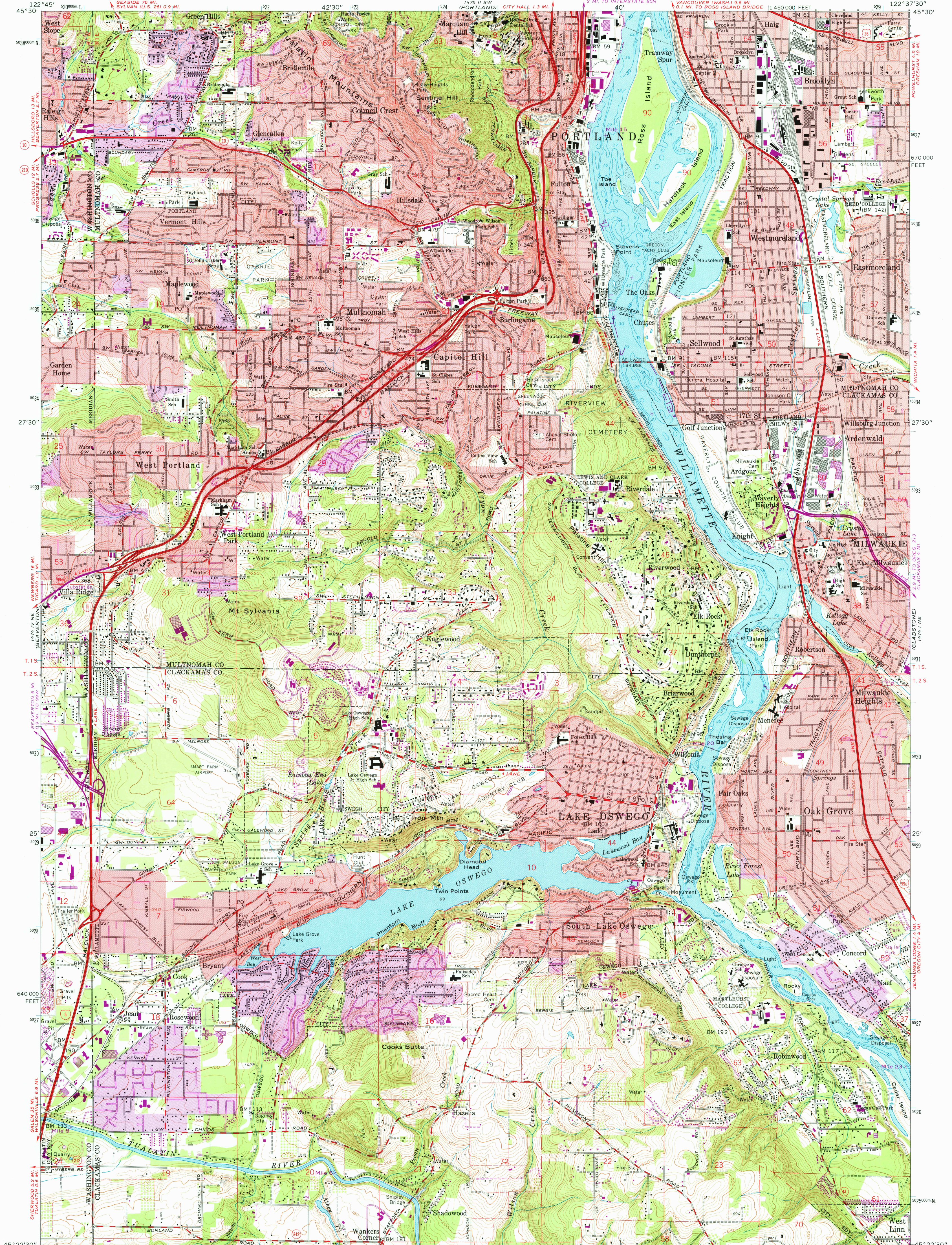


UNITED STATES
DEPARTMENT OF THE INTERIOR
GEOLOGICAL SURVEY

LAKE OSWEGO QUADRANGLE
OREGON
7.5 MINUTE SERIES (TOPOGRAPHIC)



Mapped, edited, and published by the Geological Survey

Control by USGS, USC&GS, USCE, and State of Oregon

Topography from aerial photographs by photogrammetric methods

Aerial photographs taken 1952. Field checked 1954

Revised from aerial photographs taken 1960. Field checked 1961

Selected hydrographic data compiled from USC&GS

Charts 6155 (1959) and 6171 (1958)

This information is not intended for navigational purposes

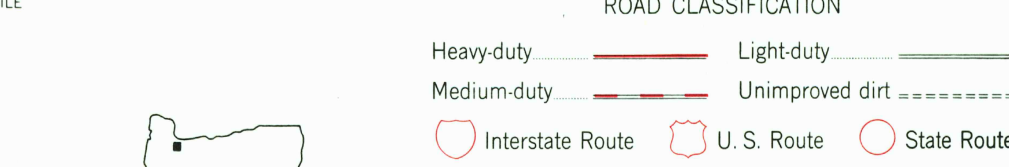
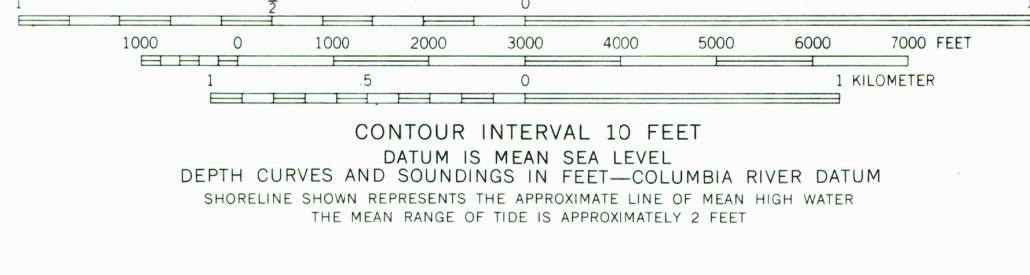
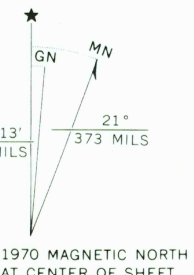
Polyconic projection. 1927 North American datum

10,000-foot grid based on Oregon coordinate system, north zone

1000-meter Universal Transverse Mercator grid ticks, zone 10, shown in blue

Red tint indicates areas in which only landmark buildings are shown

Fine red dashed lines indicate selected fence lines



LAKE OSWEGO, OREG.
NW 1/4 OREGON CITY 15' QUADRANGLE
N4522.5-W12237.5/7.5

1961
PHOTOREVISED 1970
AMS 1474 1 NW-SERIES Y892

USGS
Historical File
Topographic Division

THIS MAP COMPLIES WITH NATIONAL MAP ACCURACY STANDARDS
FOR SALE BY U. S. GEOLOGICAL SURVEY, DENVER, COLORADO 80225, OR WASHINGTON, D. C. 20242
A FOLDER DESCRIBING TOPOGRAPHIC MAPS AND SYMBOLS IS AVAILABLE ON REQUEST

Revisions shown in purple compiled from aerial photographs
taken 1970. This information not field checked
Purple tint indicates extension of urban areas

1350
SEP 07 1977