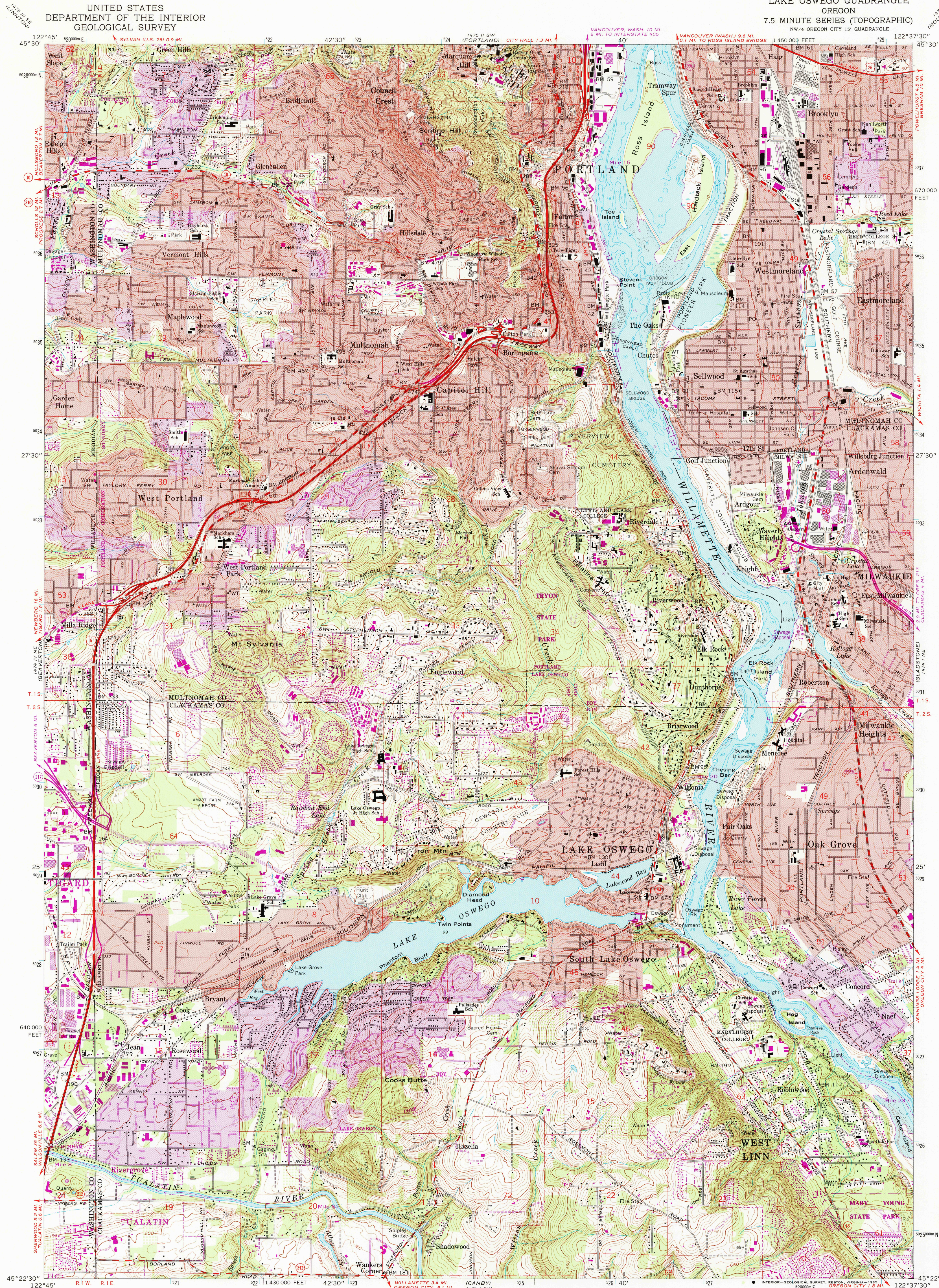


UNITED STATES  
DEPARTMENT OF THE INTERIOR  
GEOLOGICAL SURVEY

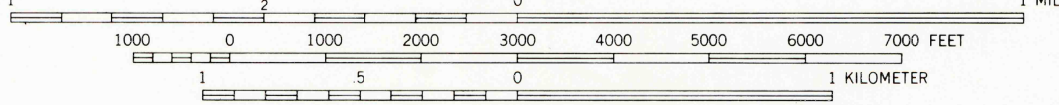
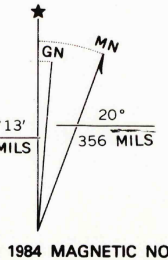
LAKE OSWEGO QUADRANGLE  
OREGON  
7.5 MINUTE SERIES (TOPOGRAPHIC)  
NW/4 OREGON CITY 15' QUADRANGLE



Mapped, edited, and published by the Geological Survey  
Control by USGS, NOS/NOAA, USCE, and State of Oregon

Topography from aerial photographs by photogrammetric methods  
Aerial photographs taken 1952. Field checked 1954  
Revised from aerial photographs taken 1960. Field checked 1961

Selected hydrographic data compiled from NOS/NOAA  
Charts 6155 (1959) and 6171 (1959)  
This information is not intended for navigational purposes  
Polyconic projection, 1927 North American datum  
10,000-foot grid based on Oregon coordinate system, north zone  
1000-meter Universal Transverse Mercator grid ticks,  
zone 10, shown in blue  
To place on the predicted North American Datum 1983  
move the projection lines 23 meters north and  
94 meters east  
Red tint indicates areas in which only landmark buildings are shown  
There may be private inholdings within the boundaries of  
the National or State reservations shown on this map



CONTOUR INTERVAL 10 FEET  
NATIONAL GEODETIC DATUM OF 1929  
DEPTH CURVES AND SOUNDINGS IN FEET—COLUMBIA RIVER DATUM  
THE RELATIONSHIP BETWEEN THE TWO DATUMS IS VARIABLE  
SHORELINE SHOWN REPRESENTS THE APPROXIMATE LINE OF MEAN HIGH WATER  
THE MEAN RANGE OF TIDE IS APPROXIMATELY 2 FEET



ROAD CLASSIFICATION  
Heavy-duty ——— Light-duty ———  
Medium-duty ——— Unimproved dirt ———  
Interstate Route ——— U.S. Route ——— State Route ———

LAKE OSWEGO, OREG.  
NW/4 OREGON CITY 15' QUADRANGLE  
45122-06-TF-024

1961  
PHOTOGRAPHED 1964  
DMA 1474 1 NW—SERIES V892

