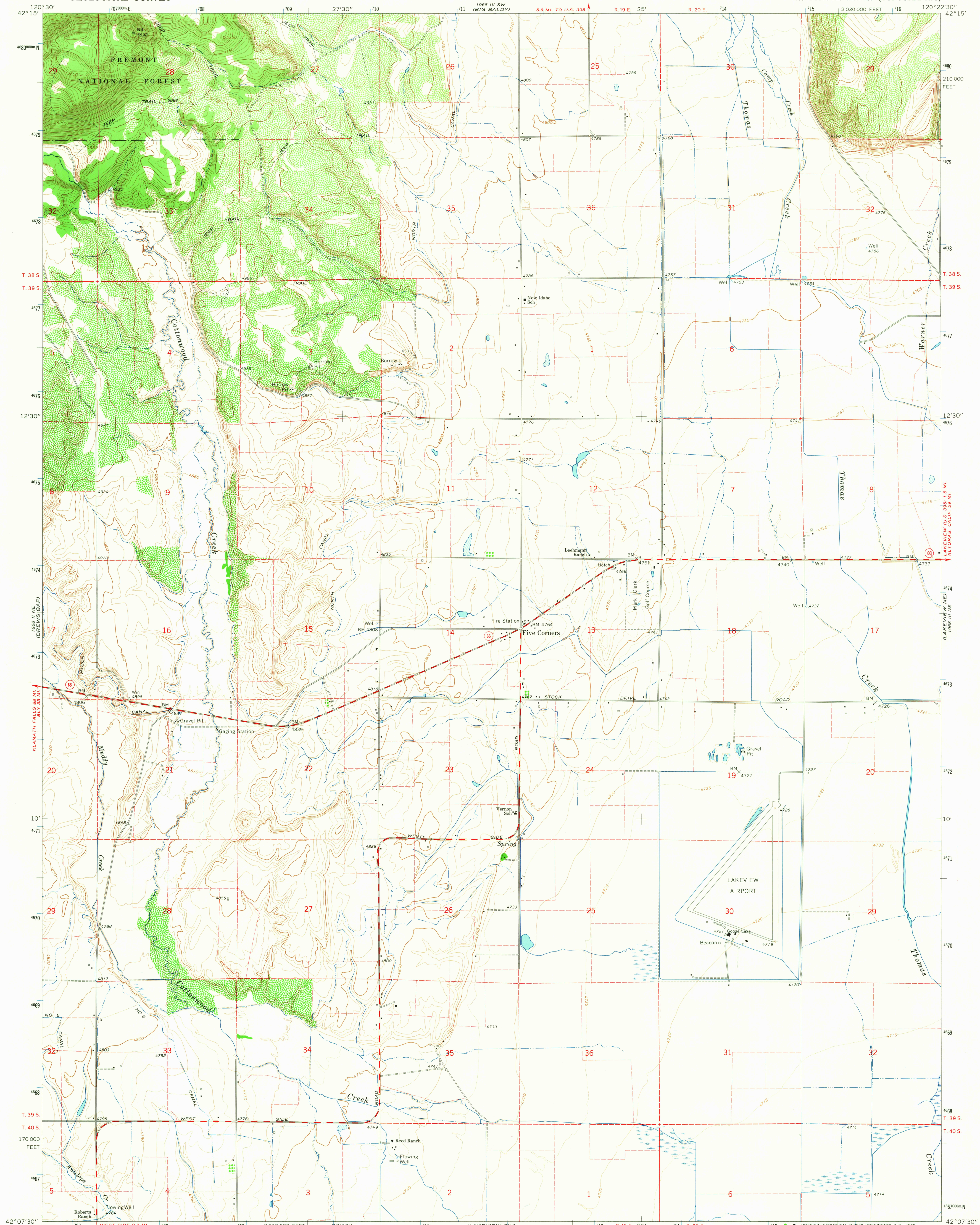
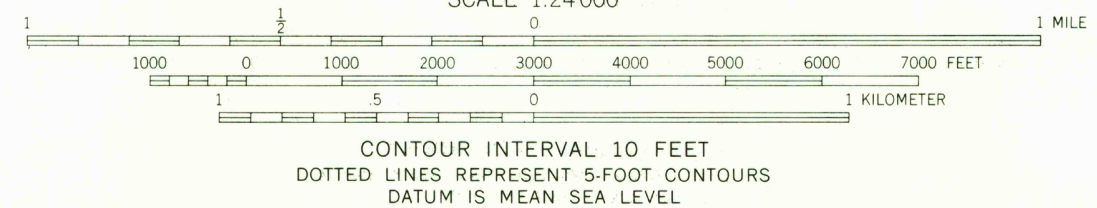
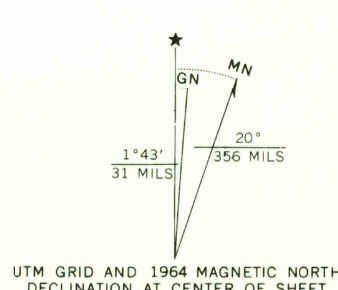


UNITED STATES  
DEPARTMENT OF THE INTERIOR  
GEOLOGICAL SURVEY

LAKEVIEW NW QUADRANGLE  
OREGON—LAKE CO.  
7.5 MINUTE SERIES (TOPOGRAPHIC)



Mapped, edited, and published by the Geological Survey  
Control by USGS and USC&GS  
Topography by photogrammetric methods from aerial  
photographs taken 1962. Field checked 1964  
Polyconic projection. 1927 North American datum  
10,000 foot grid based on Oregon coordinate system,  
south zone  
1000-meter Universal Transverse Mercator grid ticks,  
zone 10, shown in blue  
Fine red dashed lines indicate selected fence lines



ROAD CLASSIFICATION  
Medium-duty ——— Light-duty ———  
Unimproved dirt - - - - -  
State Route ○

THIS MAP COMPLIES WITH NATIONAL MAP ACCURACY STANDARDS  
FOR SALE BY U. S. GEOLOGICAL SURVEY, DENVER, COLORADO 80225, OR WASHINGTON, D. C. 20242  
A FOLDER DESCRIBING TOPOGRAPHIC MAPS AND SYMBOLS IS AVAILABLE ON REQUEST

LAKEVIEW NW, OREG.  
N4207.5 - W12022.5/7.5  
1964  
AMS 1968 III NW—SERIES V892

U.S.G.S.  
FILE COPY  
TOPOGRAPHIC DIVISION

2570  
NOV 2 1965