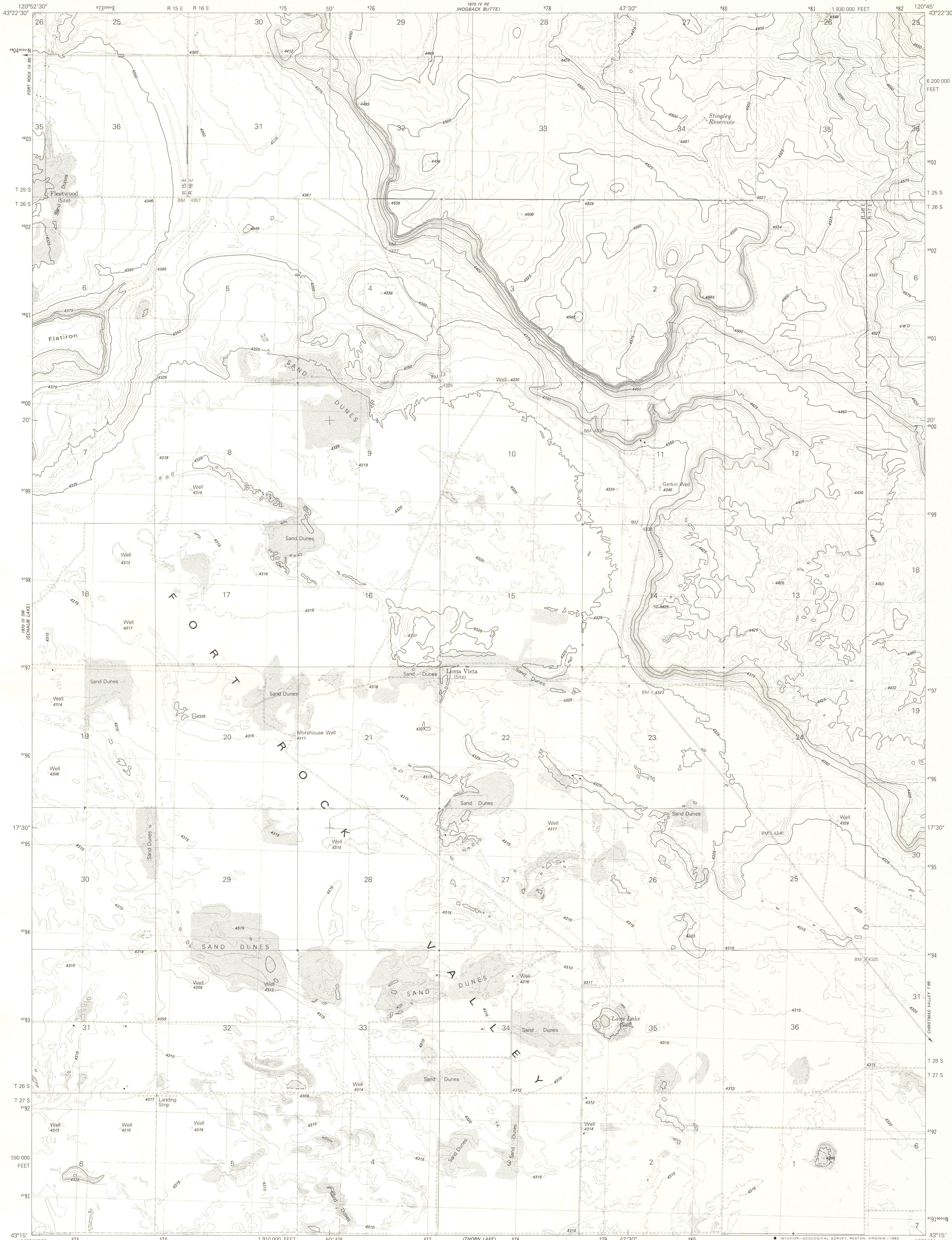


1981 (1:250,000) 1:250,000

UNITED STATES  
DEPARTMENT OF THE INTERIOR  
GEOLOGICAL SURVEY

LANE LAKE QUADRANGLE  
OREGON-LAKE CO.  
7.5 MINUTE SERIES (TOPOGRAPHIC)



1981 (1:250,000) 1:250,000

Mapped, edited, and published by the Geological Survey

Control by USGS and NOS/NOAA

Topography by photogrammetric methods from aerial photographs taken 1974. Field checked 1978

Map edited 1981

Projection and 10,000-foot grid ticks: Oregon coordinate system, south zone (Lambert conformal conic)

1000-meter Universal Transverse Mercator grid, zone 10

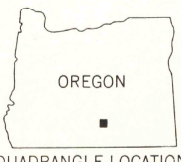
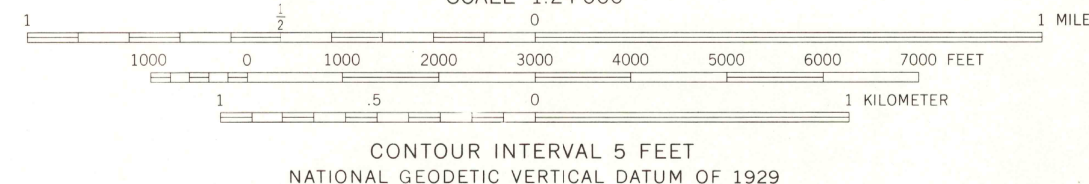
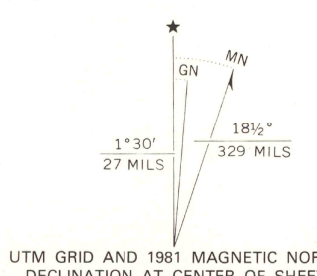
1927 North American Datum

To place on the predicted North American Datum 1983

move the projection lines 19 meters north and 90 meters east as shown by dashed corner ticks

Fine red dashed lines indicate selected fence and field lines where generally visible on aerial photographs

This information is uncheckered



ROAD CLASSIFICATION	
Primary highway, hard surface	Light-duty road, hard or improved surface
Secondary highway, hard surface	Unimproved road
Interstate Route	U.S. Route
	State Route

LANE LAKE, OREG.

N4315-W12045/7.5

1981

DMA 1870 IV SE—SERIES V892

THIS MAP COMPLIES WITH NATIONAL MAP ACCURACY STANDARDS  
FOR SALE BY U. S. GEOLOGICAL SURVEY, DENVER, COLORADO 80225, OR RESTON, VIRGINIA 22092  
A FOLDER DESCRIBING TOPOGRAPHIC MAPS AND SYMBOLS IS AVAILABLE ON REQUEST

Thorne Lake 25E  
Fort Rock, Protect  
G.L. Calder