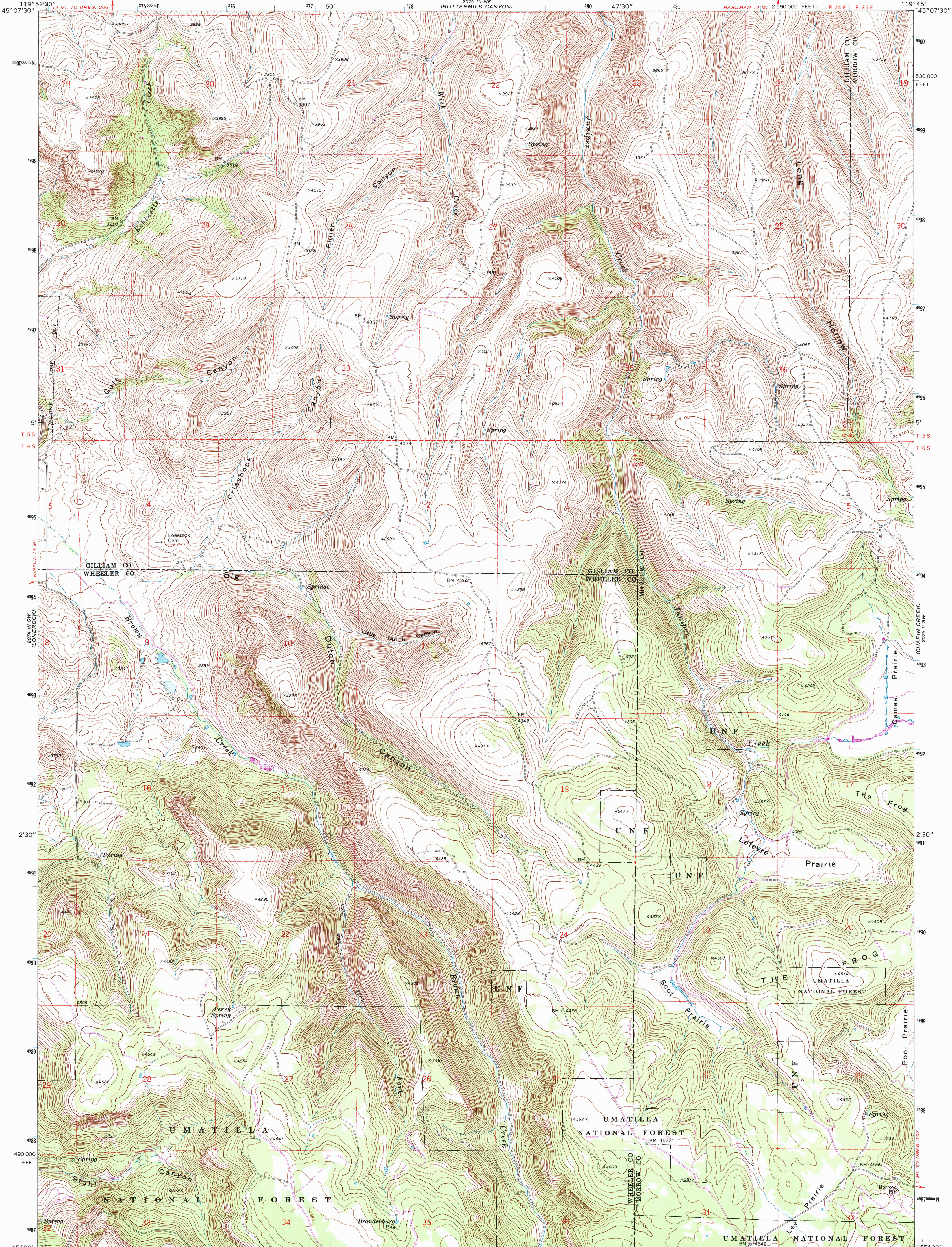


UNITED STATES
DEPARTMENT OF THE INTERIOR
GEOLOGICAL SURVEY

LEFEVRE PRAIRIE QUADRANGLE
OREGON
7.5 MINUTE SERIES (TOPOGRAPHIC)



Mapped, edited, and published by the Geological Survey

Control by USGS and NOS/NOAA

Topography by photogrammetric methods from aerial photographs taken 1967. Field checked 1969

Polyconic projection. 1927 North American Datum

10,000-foot grid based on Oregon coordinate system, north zone

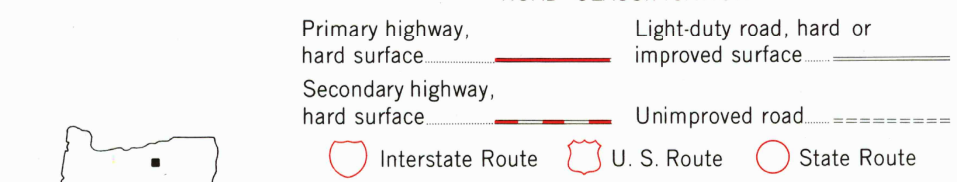
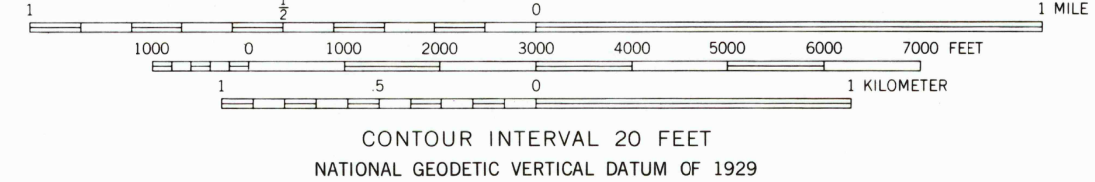
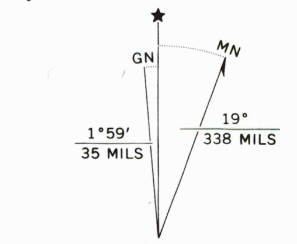
1000-meter Universal Transverse Mercator grid ticks, zone 11, shown in blue

Fine red dashed lines indicate selected fence lines

To place on the predicted North American Datum 1983

move the projection lines 19 meters north and 87 meters east as shown by dashed corner ticks

There may be private inholdings within the boundaries of the National or State reservations shown on this map



LEFEVRE PRAIRIE, OREG.

45119-A7-TF-024

1969
PHOTOREVISED 1983

DMA 2074 III SE-SERIES V992

THIS MAP COMPLIES WITH NATIONAL MAP ACCURACY STANDARDS
FOR SALE BY U. S. GEOLOGICAL SURVEY, DENVER, COLORADO 80225, OR RESTON, VIRGINIA 22092
A FOLDER DESCRIBING TOPOGRAPHIC MAPS AND SYMBOLS IS AVAILABLE ON REQUEST

Revisions shown in purple and woodland compiled from
aerial photographs taken 1981 and other source data
Partial field check by U. S. Forest Service. Map edited 1983

RETURN TO:
USGS AND HISTORICAL MAP ARCHIVES