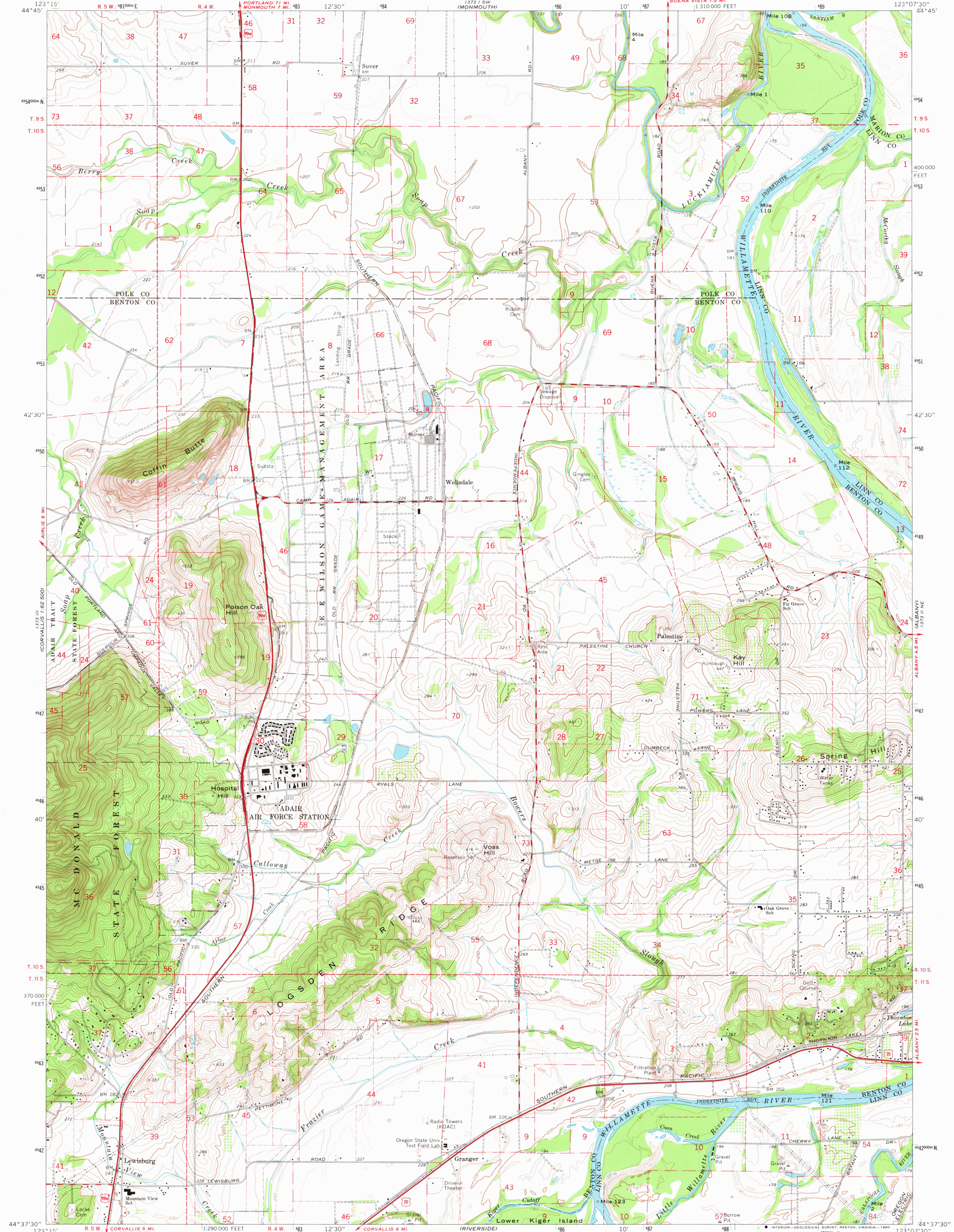


UNITED STATES  
DEPARTMENT OF THE INTERIOR  
GEOLOGICAL SURVEY

LEWISBURG QUADRANGLE  
OREGON  
7.5 MINUTE SERIES (TOPOGRAPHIC)  
NW/4 ALBANY 15' QUADRANGLE



Mapped, edited, and published by the Geological Survey

Control by USGS, USC&GS, and State of Oregon

Topography by photogrammetric methods from aerial photographs taken 1967. Field checked 1970

Polyconic projection. 1927 North American datum

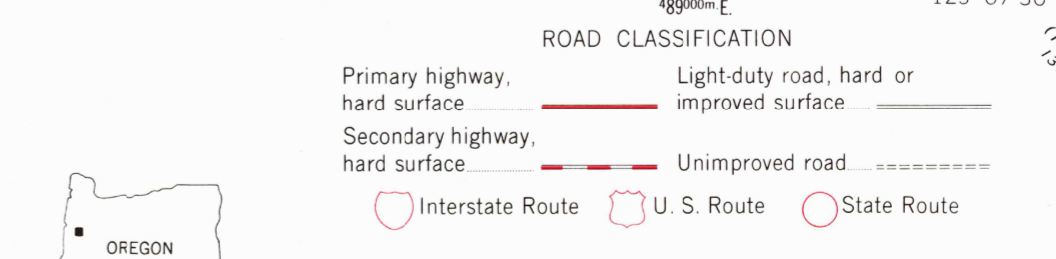
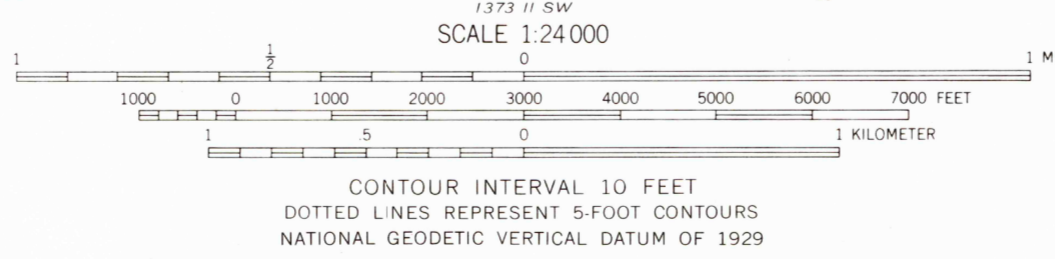
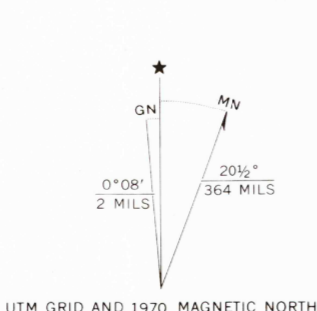
10,000-foot grid based on Oregon coordinate system, north zone

1000-meter Universal Transverse Mercator grid ticks, zone 10, shown in blue

To place on the predicted North American Datum 1983

move the projection lines 23 meters north and 95 meters east as shown by dashed corner ticks

There may be private inholdings within the boundaries of the National or State reservations shown on this map



THIS MAP COMPLIES WITH NATIONAL MAP ACCURACY STANDARDS  
FOR SALE BY U. S. GEOLOGICAL SURVEY, DENVER, COLORADO 80225, OR RESTON, VIRGINIA 22092  
A FOLDER DESCRIBING TOPOGRAPHIC MAPS AND SYMBOLS IS AVAILABLE ON REQUEST

LEWISBURG, OREG.  
NW/4 ALBANY 15' QUADRANGLE  
N4437.5-W12307.5/7.5

1970  
DMA 1373 II NW-SERIES V892

1300  
Nov 18 1980