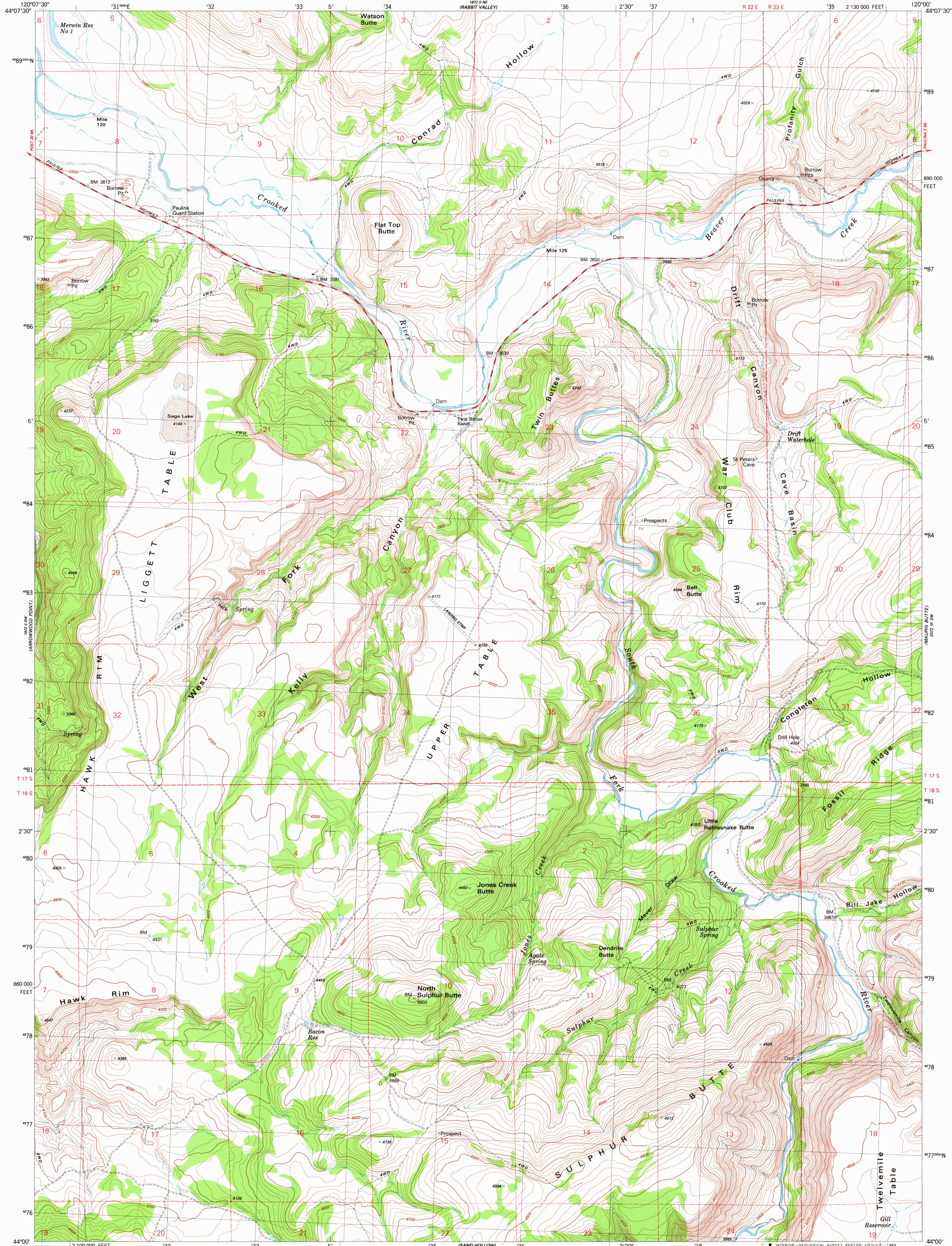


UNITED STATES
DEPARTMENT OF THE INTERIOR
GEOLOGICAL SURVEY

LIGGETT TABLE QUADRANGLE
OREGON—CROOK CO.
7.5 MINUTE SERIES (TOPOGRAPHIC)



Mapped, edited, and published by the Geological Survey

Control by USGS and NOS/NOAA

Topography by photogrammetric methods from aerial photographs taken 1974. Field checked 1977

Map edited 1982

Projection and 10,000-foot grid ticks: Oregon coordinate system, south zone (Lambert conformal conic)

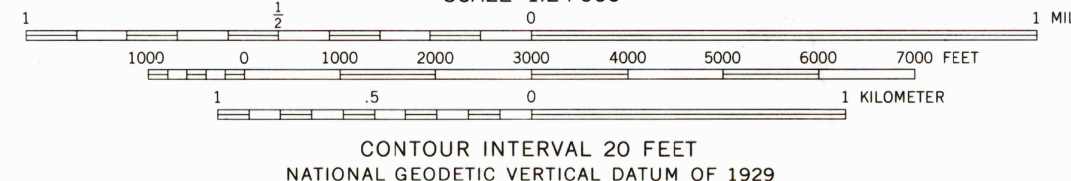
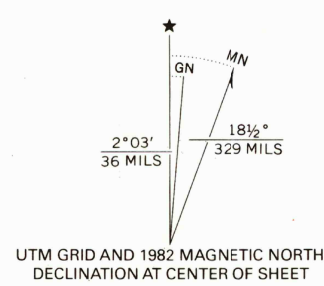
1000-meter Universal Transverse Mercator grid, zone 10

1927 North American Datum

To place on the predicted North American Datum 1983 move the projection lines 19 meters north and 88 meters east as shown by dashed corner ticks

Fine red dashed lines indicate selected field and fence lines where generally visible on aerial photography

This information is unchecked



ROAD CLASSIFICATION	
Primary highway, hard surface	Light-duty road, hard or improved surface
Secondary highway, hard surface	Unimproved road
Interstate Route	U. S. Route
	State Route

LIGGETT TABLE, OREG.
N4400—W12000/7.5

1982

DMA 1972 II SE—SERIES V892

THIS MAP COMPLIES WITH NATIONAL MAP ACCURACY STANDARDS
FOR SALE BY U. S. GEOLOGICAL SURVEY, DENVER, COLORADO 80225, OR RESTON, VIRGINIA 22092
A FOLDER DESCRIBING TOPOGRAPHIC MAPS AND SYMBOLS IS AVAILABLE ON REQUEST

RETURN TO:
USGS AND HISTORICAL MAP ARCHIVES

SEP 1 1982