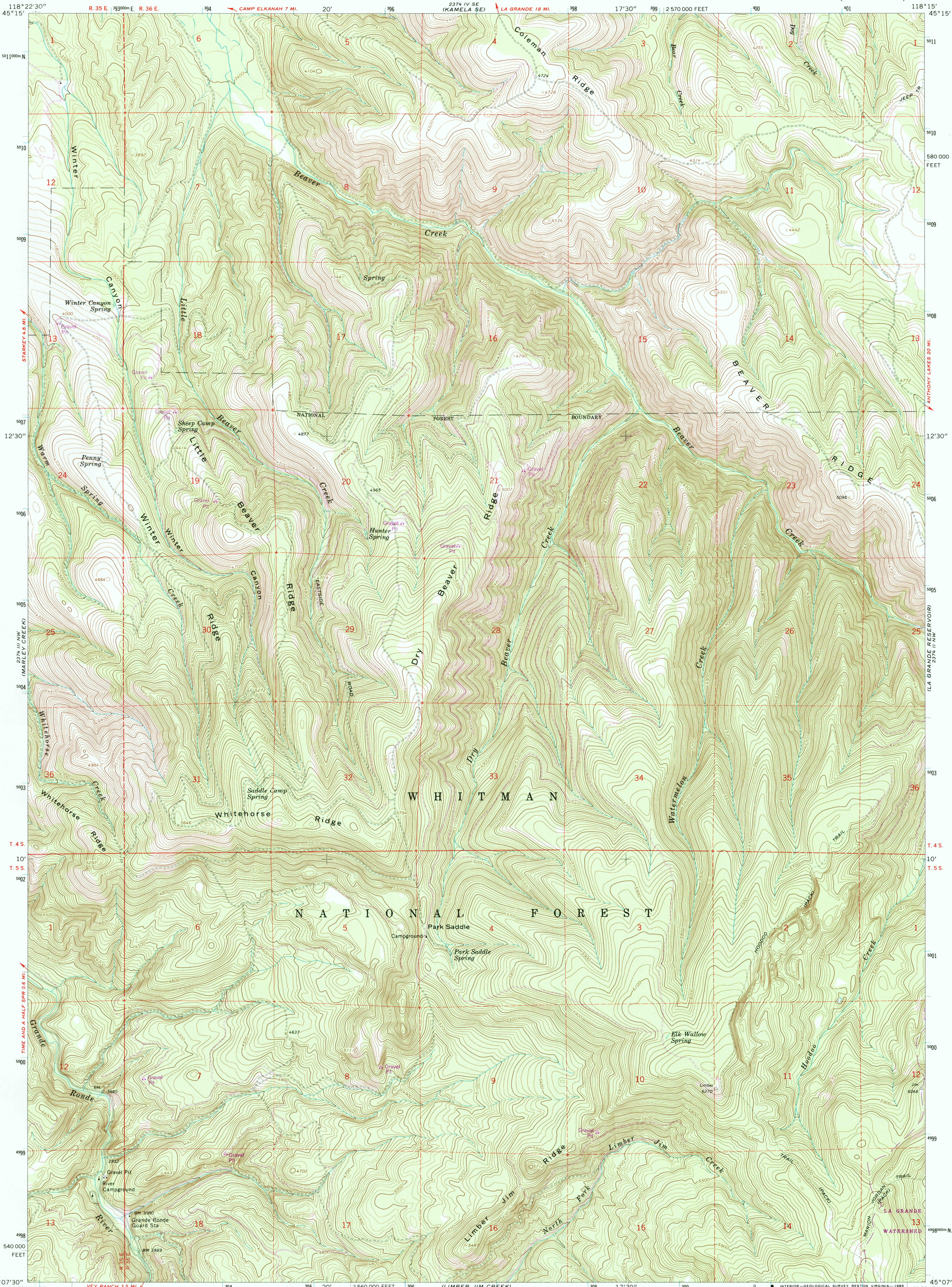


UNITED STATES
DEPARTMENT OF THE INTERIOR
GEOLOGICAL SURVEY

LITTLE BEAVER CREEK QUADRANGLE
OREGON—UNION CO.
7.5 MINUTE SERIES (TOPOGRAPHIC)



Mapped, edited, and published by the Geological Survey

Control by USGS and NOS/NOAA

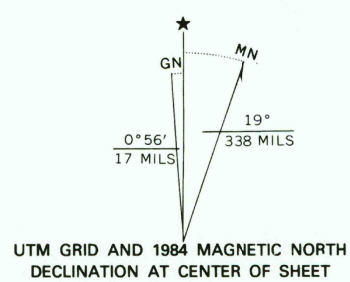
Topography by photogrammetric methods from aerial photographs taken 1960. Field checked 1965

Polyconic projection. 1927 North American datum, 10,000-foot grid based on Oregon coordinate system, north zone

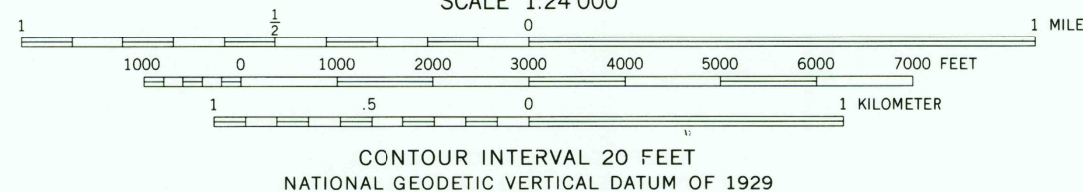
1000-meter Universal Transverse Mercator grid ticks, zone 11, shown in blue

To place on the predicted North American Datum 1983 move the projection lines 18 meters north and 82 meters east as shown by dashed corner ticks

There may be private inholdings within the boundaries of the National or State reservations shown on this map



UTM GRID AND 1984 MAGNETIC NORTH DECLINATION AT CENTER OF SHEET



QUADRANGLE LOCATION

ROAD CLASSIFICATION
Light-duty ——— Unimproved dirt - - - - -

LITTLE BEAVER CREEK, OREG.
45118-B3-TF-024

THIS MAP COMPLIES WITH NATIONAL MAP ACCURACY STANDARDS
FOR SALE BY U. S. GEOLOGICAL SURVEY, DENVER, COLORADO 80225, OR RESTON, VIRGINIA 22092
A FOLDER DESCRIBING TOPOGRAPHIC MAPS AND SYMBOLS IS AVAILABLE ON REQUEST

Revision shown in purple and woodland compiled from aerial photographs taken 1981 and other sources
Partial field check by U.S. Forest Service. Map edited 1984
1965
PHOTOREVISED 1984
DMA 2574 III NE—SERIES V892

