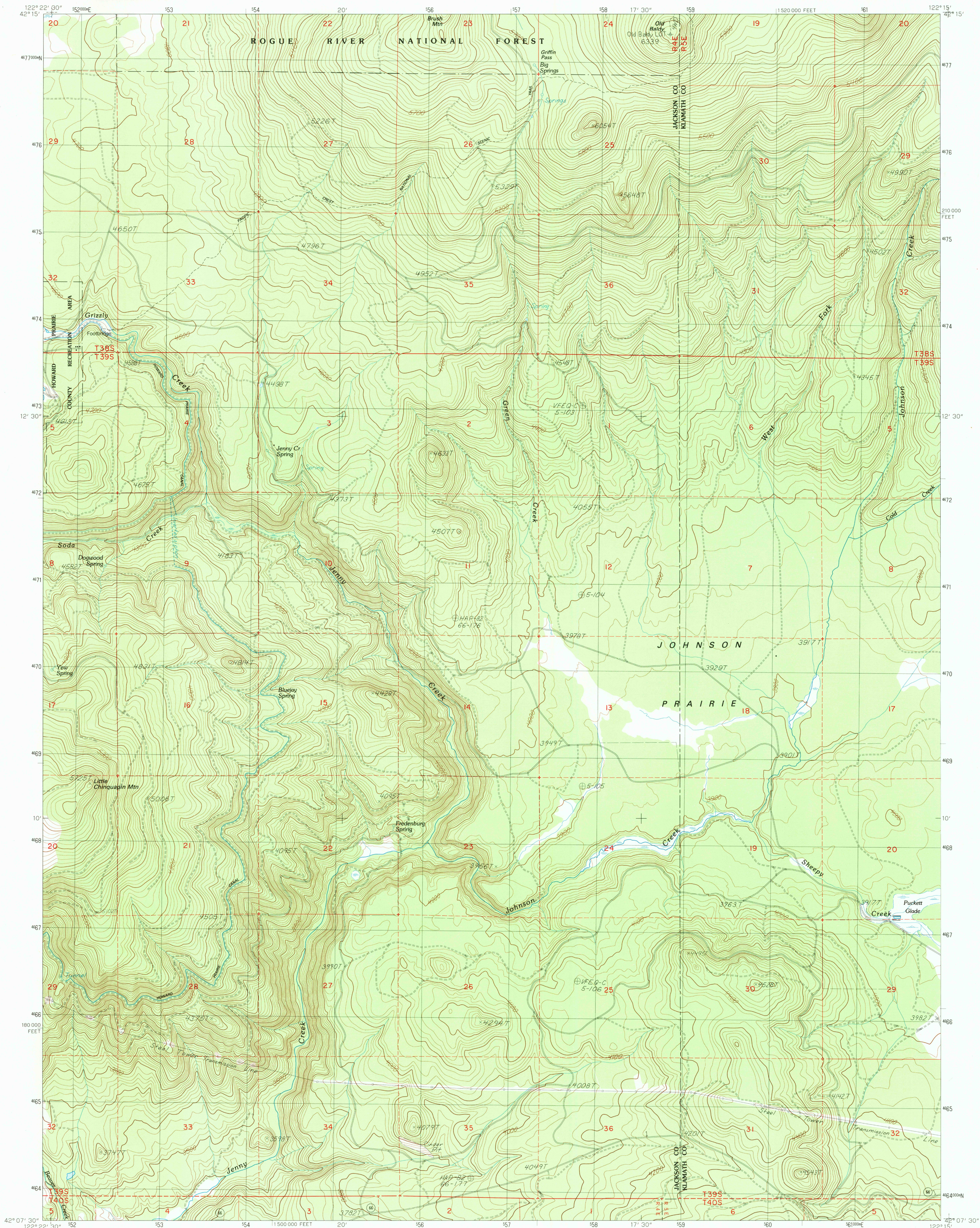


UNITED STATES
DEPARTMENT OF THE INTERIOR
GEOLOGICAL SURVEY

LITTLE CHINQUAPIN MTN. QUADRANGLE
OREGON
7.5 MINUTE SERIES (TOPOGRAPHIC)



PRODUCED BY THE UNITED STATES GEOLOGICAL SURVEY
CONTROL BY USGS, NOS/NOAA
COMPILED FROM AERIAL PHOTOGRAPHS TAKEN 1980, 1982-83
FIELD CHECKED 1982. MAP EDITED 1988
PROJECTION LAMBERT CONFORMAL CONIC
GRID: 1000-METER UNIVERSAL TRANSVERSE MERCATOR, ZONE 10
10,000-FOOT STATE GRID TICS, OREGON, SOUTH ZONE
UTM GRID DECLINATION 0728° EAST
1980 MAGNETIC NORTH DECLINATION 1890° EAST
VERTICAL DATUM NATIONAL GEODETIC VERTICAL DATUM OF 1929
HORIZONTAL DATUM 1987 NORTH AMERICAN DATUM
To place on the predicted North American Datum of 1983,
move the projection lines as shown by dashed corner ticks
(19 meters north / 94 meters east)
There may be private inholdings within the boundaries of any
Federal and State Reservations shown on this map
No distinction made between houses, barns, and other buildings

PROVISIONAL MAP
Produced from original
manuscript drawings. Infor-
mation shown as of date of
photography.

SCALE 1:24 000
1 000 0 1000 2000 3000 4000 5000 6000 7000 8000 9000 10 000
KILOMETERS
METERS
MILES
CONTOUR INTERVAL 20 FEET
To convert meters to feet multiply by 3.2808
To convert feet to meters multiply by 0.3048
THIS MAP COMPLIES WITH NATIONAL MAP ACCURACY STANDARDS
FOR SALE BY U. S. GEOLOGICAL SURVEY, DENVER, COLORADO 80225, OR RESTON, VIRGINIA 22092



1	2	3
4	5	6
7	8	9

1 Robinson Butte
2 Brown Mtn.
3 Lake of the Woods
South
4 Hyatt Reservoir
5 Surveyor Mtn.
6 Soda Mountain
7 Parker Mtn.
8 Mule Hill

ROAD LEGEND
Improved Road.....
Unimproved Road.....
Trail.....
Interstate Route U.S. Route State Route
LITTLE CHINQUAPIN MTN., OREG.
PROVISIONAL EDITION 1988

42122-B3-TF-024

NOV 22 1988
REC'D FILE COPY
U.S. GEOLOGICAL SURVEY