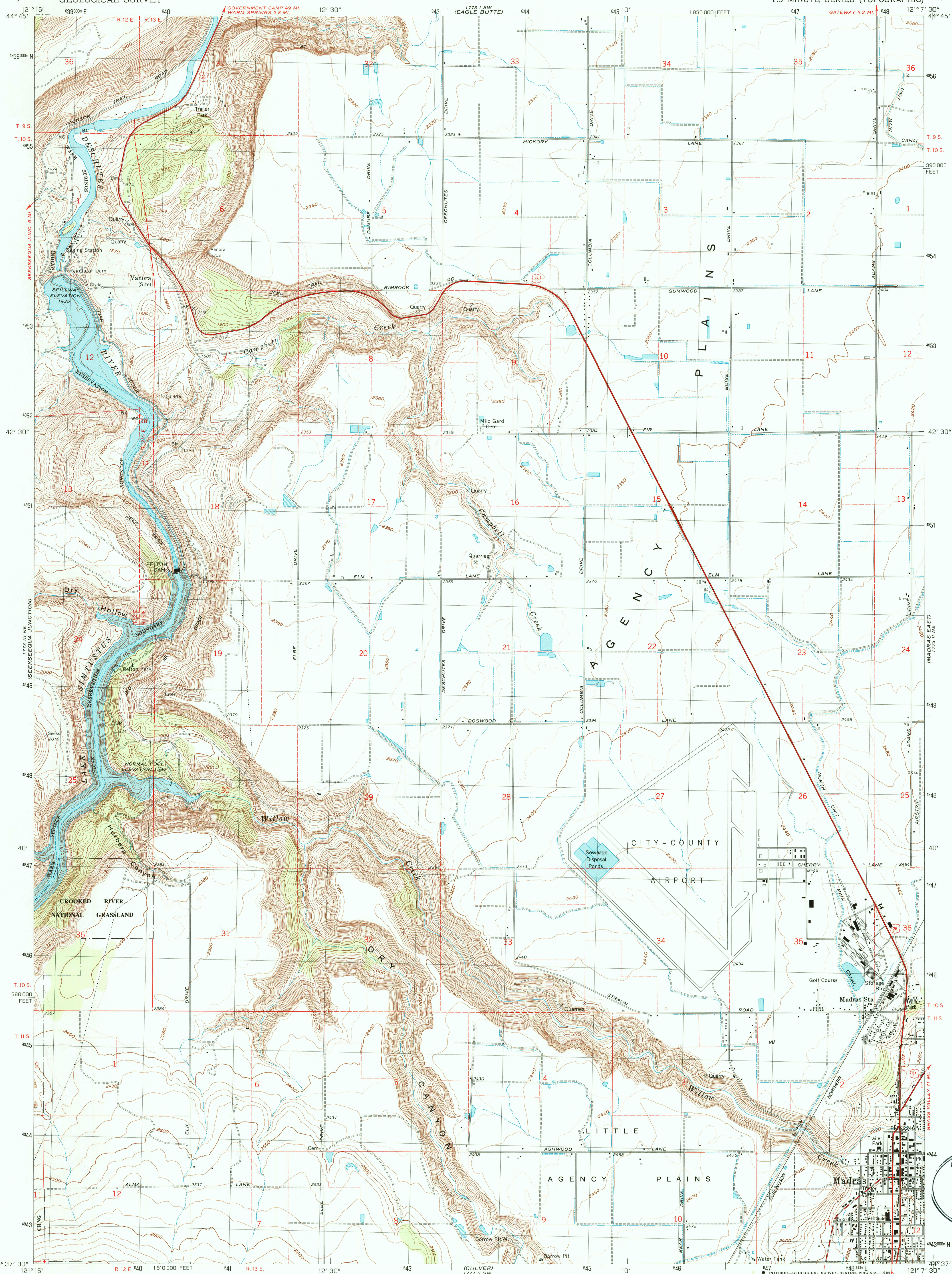


UNITED STATES  
DEPARTMENT OF THE INTERIOR  
GEOLOGICAL SURVEY

MADRAS WEST QUADRANGLE  
OREGON—JEFFERSON CO.  
7.5 MINUTE SERIES (TOPOGRAPHIC)



Mapped, edited, and published by the Geological Survey  
Revised in cooperation with U.S. Forest Service

Control by USGS and NOS/NOAA

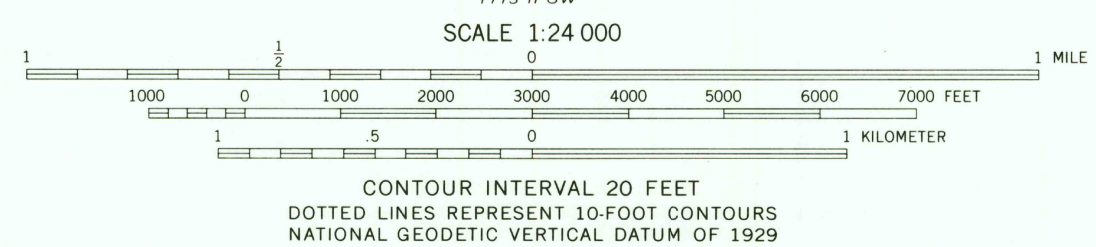
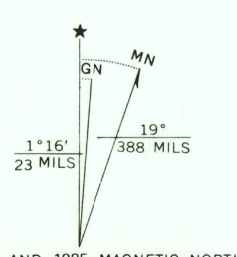
Topography by photogrammetric methods from aerial  
photographs taken 1957 and from planimetric survey by  
U.S. Bureau of Reclamation. Field checked by USGS 1963  
Revised from aerial photographs taken 1962  
Limited field checked 1985. Map edited 1985

Projection and 10,000-foot grid ticks: Oregon coordinate  
system, north zone (Lambert conformal conic)  
1000-meter Universal Transverse Mercator grid, zone 10  
1927 North American Datum

To place on the predicted North American Datum 1983  
move the projection lines 21 meters north and  
92 meters east as shown by dashed corner ticks

Fine red dashed lines indicate selected fence lines

There may be private inholdings within the boundaries of  
the National or State reservations shown on this map.



ROAD CLASSIFICATION  
Heavy-duty ——— Light-duty ———  
Medium-duty ——— Unimproved dirt ———  
U.S. Route

MADRAS WEST, OREG.  
44121 F2-TF-024

1985

DMA 1773 II NW—SERIES V 892