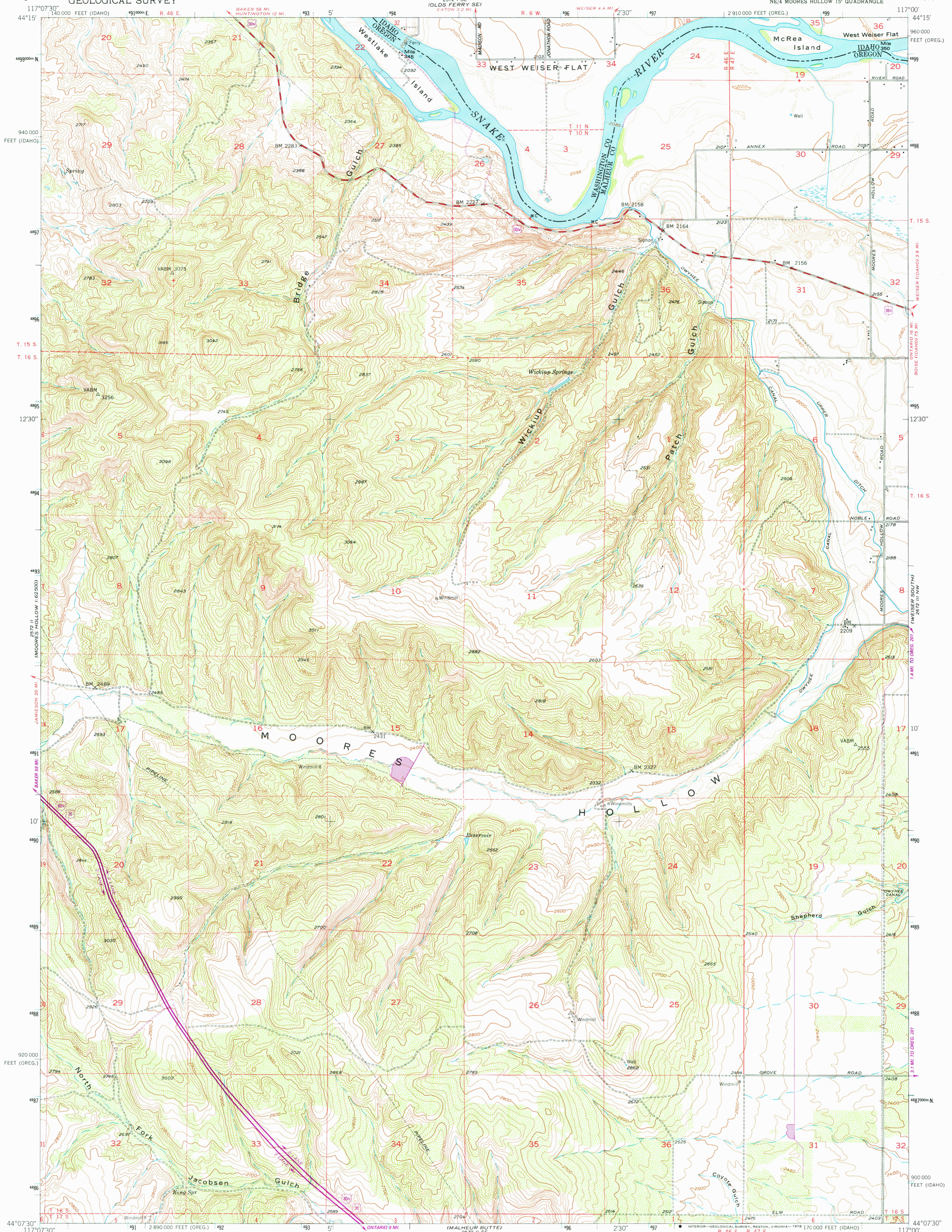
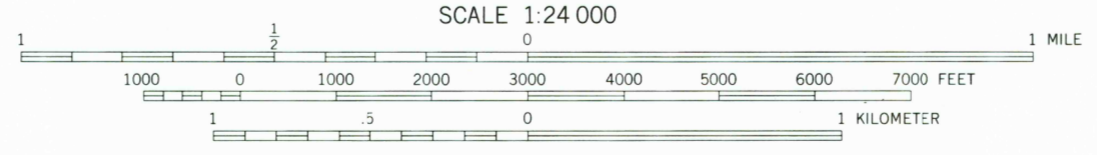
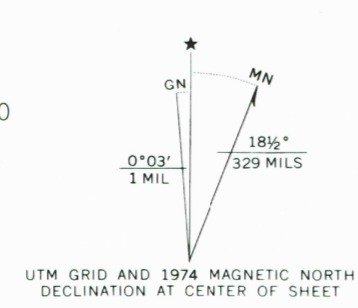


UNITED STATES
DEPARTMENT OF THE INTERIOR
GEOLOGICAL SURVEY

MOORES HOLLOW QUADRANGLE
OREGON-IDAHO
7.5 MINUTE SERIES (TOPOGRAPHIC)
NE/4 MOORES HOLLOW 15' QUADRANGLE



Mapped, edited, and published by the Geological Survey
Control by USGS and NOS/NOAA
Topography from aerial photographs by multiplex methods and by plane-table surveys 1951. Aerial photographs taken 1950
Polyconic projection. 1927 North American datum 10,000-foot grids based on Oregon coordinate system, south zone, and Idaho coordinate system, west zone
Dashed land lines indicate approximate locations
1000-meter Universal Transverse Mercator grid ticks, zone 11, shown in blue
Revisions shown in purple compiled from aerial photographs taken 1974. This information not field checked



CONTOUR INTERVAL 20 FEET
DOTTED LINES REPRESENT 5-FOOT CONTOURS
NATIONAL GEODETIC VERTICAL DATUM OF 1929

THIS MAP COMPLIES WITH NATIONAL MAP ACCURACY STANDARDS
FOR SALE BY U.S. GEOLOGICAL SURVEY, DENVER, COLORADO 80225, OR RESTON, VIRGINIA 22092
A FOLDER DESCRIBING TOPOGRAPHIC MAPS AND SYMBOLS IS AVAILABLE ON REQUEST



ROAD CLASSIFICATION

- Heavy-duty 4 LANE 16 LANE Light-duty
- Medium-duty 4 LANE 6 LANE Unimproved dirt
- U.S. Route
- State Route
- Interstate Route

MOORES HOLLOW, OREG.-IDAHO
NE/4 MOORES HOLLOW 15' QUADRANGLE
N44C7.5-W11700/7.5
1951
PHOTOREVISED 1974
AMS 2572 II NE-SERIES V892

JUL 17 1978

3250