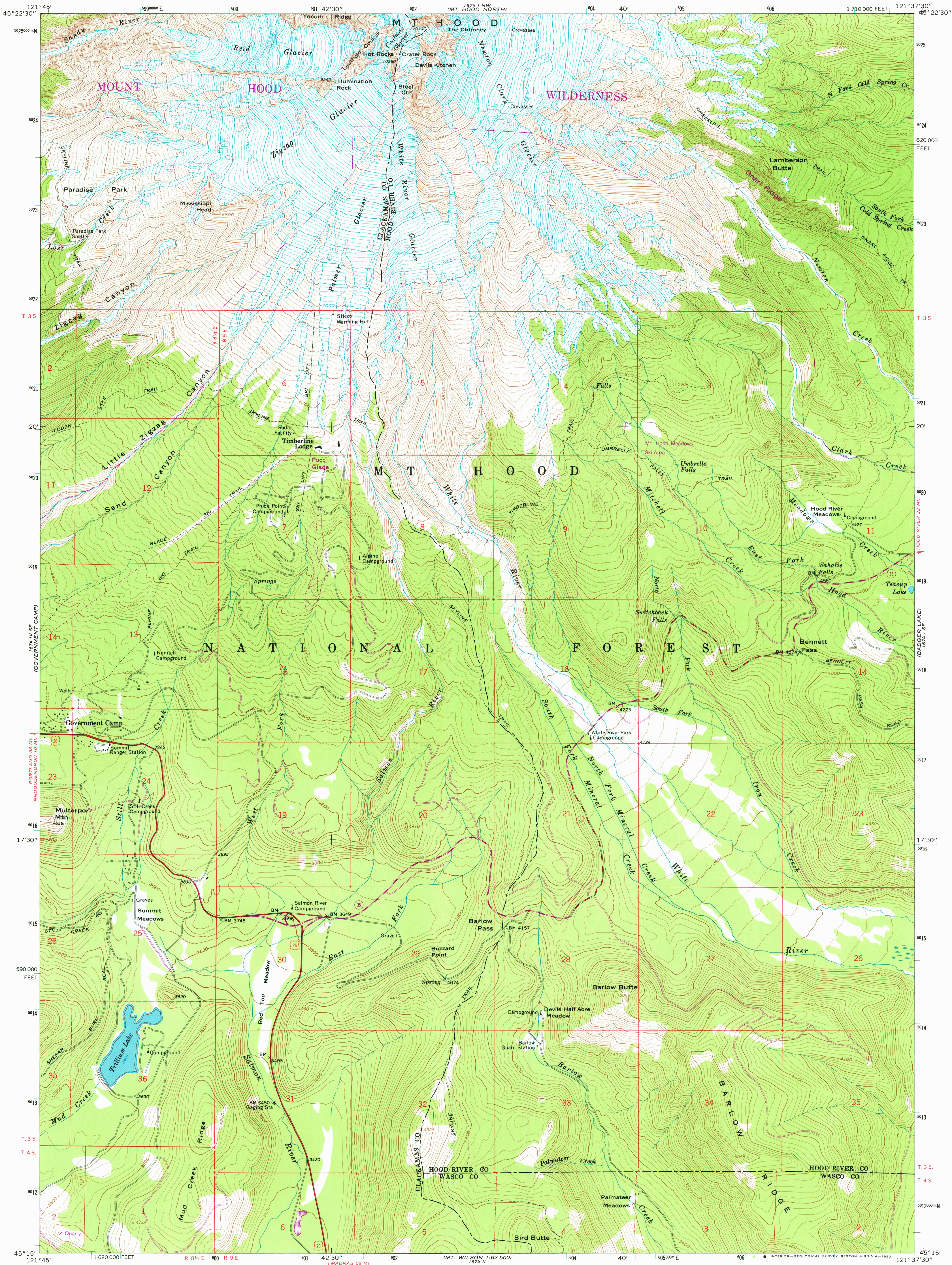


UNITED STATES
DEPARTMENT OF THE INTERIOR
GEOLOGICAL SURVEY

MOUNT HOOD SOUTH QUADRANGLE
OREGON
7.5 MINUTE SERIES (TOPOGRAPHIC)



Mapped, edited, and published by the Geological Survey

Control by USGS and NOS/NOAA

Topography by photogrammetric methods from aerial

photographs taken 1956. Field checked 1962

Polyconic projection. 1927 North American datum

10,000-foot grid based on Oregon coordinate system, north zone

1000-meter Universal Transverse Mercator grid ticks,

zone 10, shown in blue

To place on the predicted North American Datum 1983

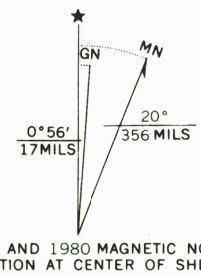
move the projection lines 22 meters north and

92 meters east as shown by dashed corner ticks

Where omitted, land lines have not been established

There may be private inholdings within the boundaries of

the National or State reservations shown on this map



SCALE 1:24 000

1 1000 0 1000 2000 3000 4000 5000 6000 7000 FEET

1 5 10 20 30 40 50 60 70 80 90 100 METERS

CONTOUR INTERVAL 40 FEET

NATIONAL GEODETIC VERTICAL DATUM OF 1929



ROAD CLASSIFICATION
Heavy-duty ——— Light-duty ———
Medium-duty ——— Unimproved dirt ———
USGS U.S. Route
Historical File
Topographic Division

MOUNT HOOD SOUTH, OREG.

(FORMERLY TIMBERLINE LODGE)

N4515—W12137.5/7.5

1962

PHOTOREVISED 1980

DMA 1674 1 SW—SERIES V892

FOR SALE BY U.S. GEOLOGICAL SURVEY, DENVER, COLORADO 80225, OR RESTON, VIRGINIA 22092

A FOLDER DESCRIBING TOPOGRAPHIC MAPS AND SYMBOLS IS AVAILABLE ON REQUEST

Revisions shown in purple compiled by the U.S. Forest Service
from aerial photographs taken 1973 and other source data
This information not field checked. Map edited by the
Geological Survey 1980

AUG 20 1980

950