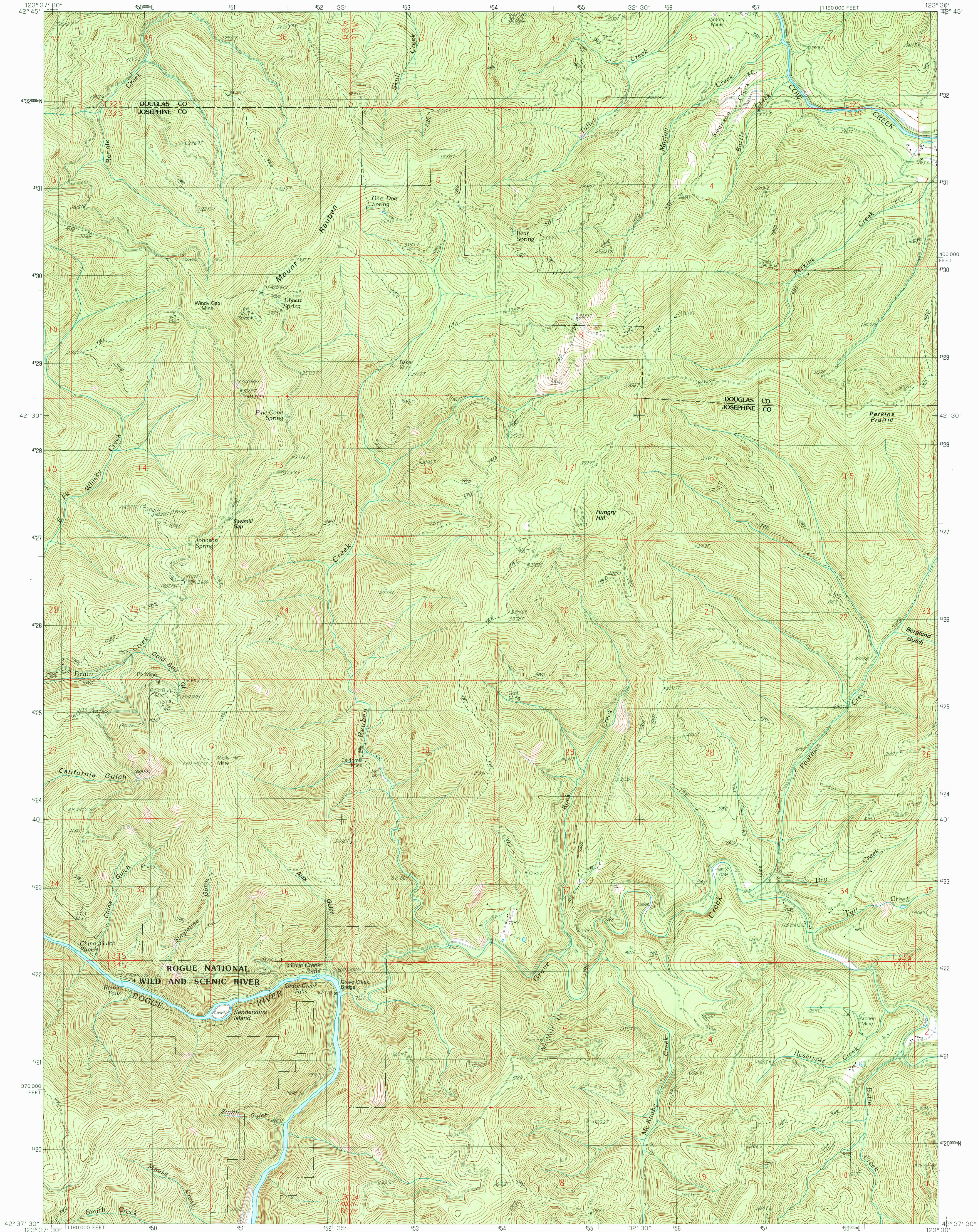


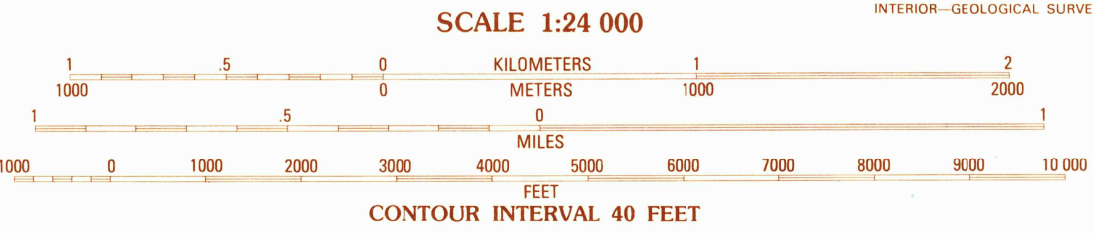
UNITED STATES  
DEPARTMENT OF THE INTERIOR  
GEOLOGICAL SURVEY

MOUNT REUBEN QUADRANGLE  
OREGON  
7.5 MINUTE SERIES (TOPOGRAPHIC)

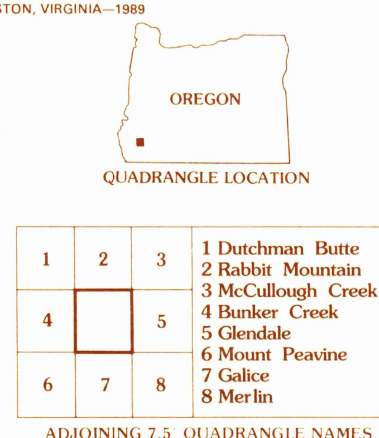


PRODUCED BY THE UNITED STATES GEOLOGICAL SURVEY  
CONTROL BY THE UNITED STATES GEOLOGICAL SURVEY  
COMPILED FROM AERIAL PHOTOGRAPHS TAKEN 1984  
FIELD CHECKED 1986. MAP EDITED 1989  
PROJECTION LAMBERT CONFORMAL CONIC  
GRID 1000-METER UNIVERSAL TRANSVERSE MERCATOR  
10,000-FOOT STATE GRID TICS. OREGON, SOUTH ZONE  
UTM GRID DECLINATION 0°23' WEST  
1989 MAGNETIC NORTH DECLINATION 18 00 EAST  
VERTICAL DATUM NATIONAL GEODETIC VERTICAL DATUM OF 1929  
HORIZONTAL DATUM 1927 NORTH AMERICAN DATUM  
To place on the predicted North American Datum of 1983  
move the projection lines as shown by dashed corner ticks  
(21 meters North and 97 meters East)  
There may be private inholdings within the boundaries of any  
Federal or State reservations shown on this map  
No distinction made between houses, barns, and other buildings

PROVISIONAL MAP  
Produced from original  
manuscript drawings. Infor-  
mation shown as of date of  
photography.



THIS MAP COMPLIES WITH NATIONAL MAP ACCURACY STANDARDS  
FOR SALE BY U. S. GEOLOGICAL SURVEY  
DENVER, COLORADO 80225, OR RESTON, VIRGINIA 22092



ROAD LEGEND  
Improved Road  
Unimproved Road  
Trail  
Interstate Route  
U. S. Route  
State Route  
MOUNT REUBEN, OREGON  
PROVISIONAL EDITION 1989  
42123-F5-TF-024

U.S. GEOLOGICAL SURVEY  
MAR 27 1990  
REC'D FILE COPY