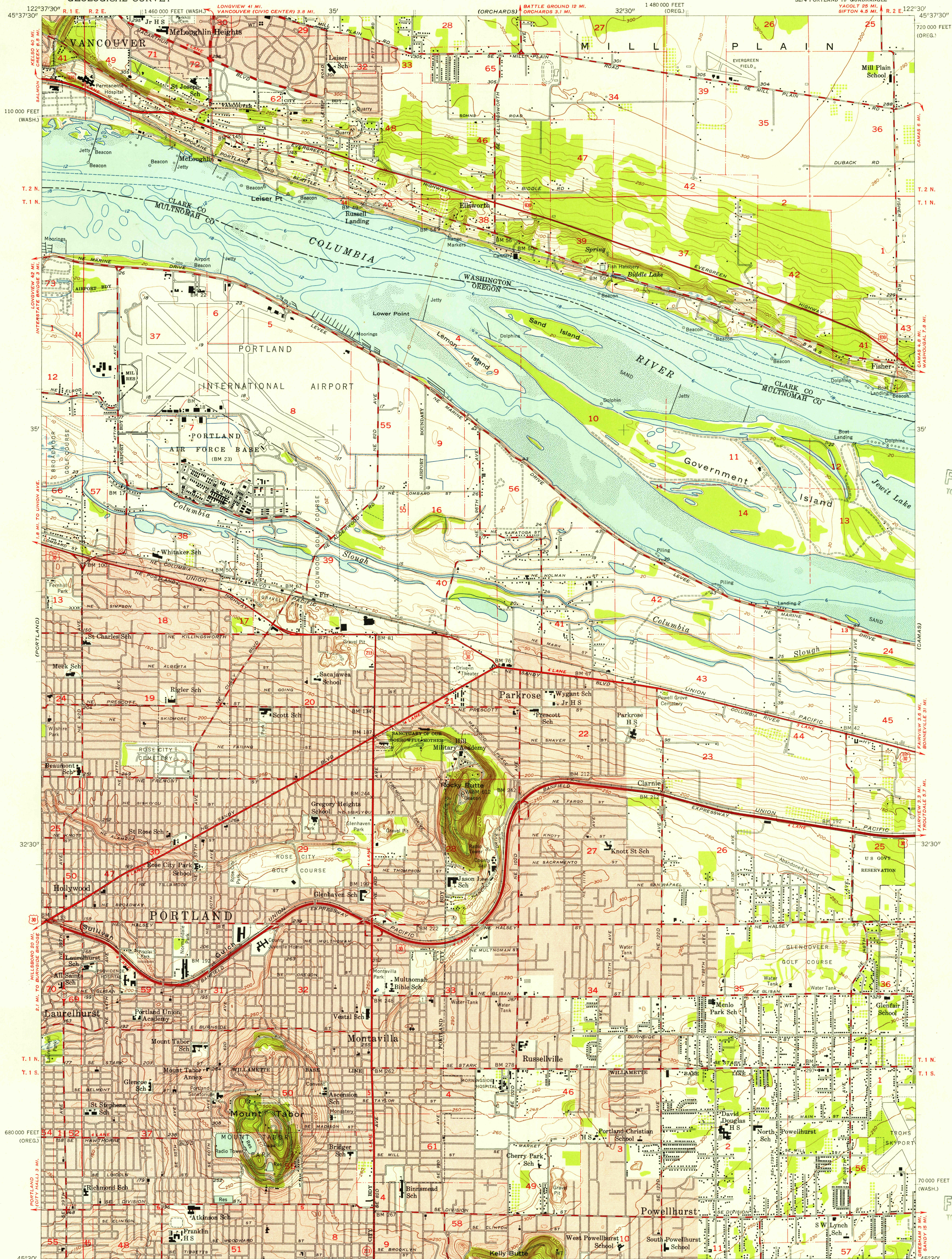


UNITED STATES
DEPARTMENT OF THE INTERIOR
GEOLOGICAL SURVEY

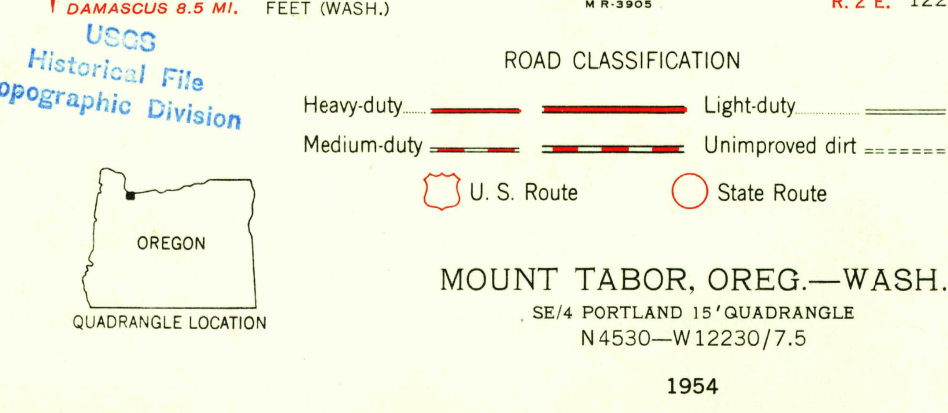
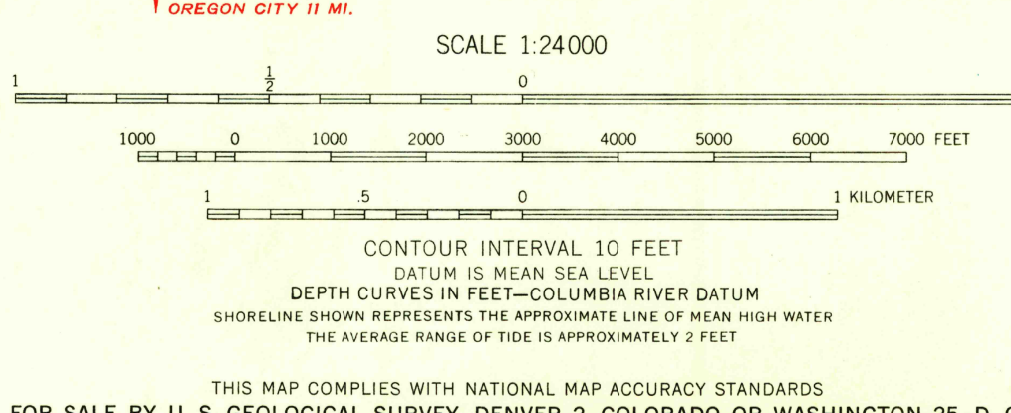
MOUNT TABOR QUADRANGLE
OREGON-WASHINGTON
7.5 MINUTE SERIES (TOPOGRAPHIC)
SE 1/4 PORTLAND 15' QUADRANGLE



U.S.G.S.
FILE COPY
TOPOGRAPHIC DIVISION

U.S.G.S.
FILE COPY
TOPOGRAPHIC DIVISION

Mapped, edited, and published by the Geological Survey
Control by USGS, USC&GS, and State of Oregon
Topography from aerial photographs by photogrammetric methods
and by planimetric surveys. Culture and drainage in part by USC&GS
Aerial photographs taken 1951 and 1952. Field check 1954
Polyconic projection. 1927 North American datum
10,000-foot grid based on Oregon coordinate system, north zone
and Washington coordinate system, south zone
Hydrography compiled from USC&GS chart 6156 (1953)
Red tint indicates areas in which only
landmark buildings are shown
Dashed land lines indicate approximate locations



1954

NOV 2 1955